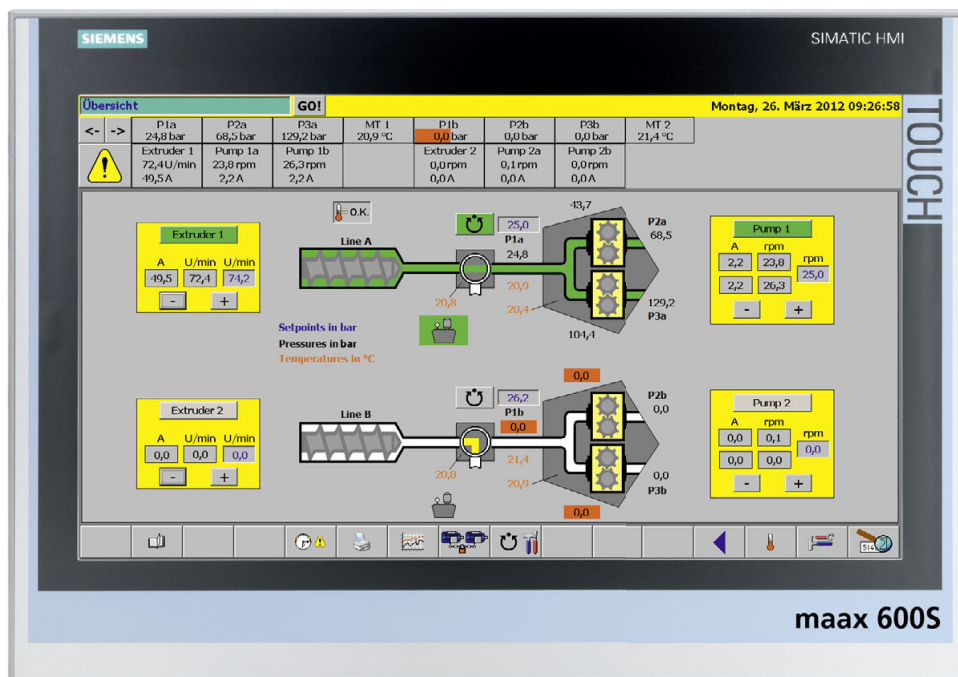


maax[®] 600S

Automation solution for complex extrusion lines



The improvement or redesign of existing extrusion plants calls for tailored, highly flexible solutions. The maax[®] 600S automation system is the ideal solution for equipping complete and complex extrusion and compounding plants. Operation, control, and adjustment of operating parameters are clearly arranged and operation is simple and intuitive. The process and operational reliability are increased. The modular and project-specific structure enables optimized flexibility of design.

Your benefits

- Simple and clear operation of the line start and stop procedures
- Increased productivity by saving procedures in parameter lists
- Project-specific system and software configuration
- Rapid and precise control of pelletizer and pump speed, depending on application
- Integrated temperature control of system components
- Quick error detection by plain text messages
- Scalable visualization of various operation parameters in a trend display

maax[®] 600S

Automation solution for complex extrusion lines

Features

- Convenient and safe operation via colour display with touch function and keys
- Up to 48 temperature zones
- Online language changeover

Method of operation

- Quick error detection via plain text messages
- Automatic run-up to initial start speed
- Pressure controlled operation from start
- Integrated filter monitoring
- Integrated temperature control of plant components
- Quick and precise control of pump admission pressure

maax[®] 600S as a component of expac[®]

As a system supplier, maag pump system offers complete assemblies for your extrusion plant comprising extrex[®] gear pump, screen changer, maax[®] 600S, and drive unit. As a sum total of the individual parts, the expac[®] system enhances the productivity of your process. The experience gained by maag pump systems allows all components to be wisely networked, hence achieving an optimised solution and significantly increasing operational reliability. Integrated statistical functions and process data storage enable a transparent quality management system. Plant flexibility is also enhanced by the effect of additional tolerances, e.g. on pump admission pressure over the setpoint value (pump admission pressure control).

Technical specifications:

Analogue inputs 0-10 V:	16
Analogue outputs 0-10 V for drive actuation:	3
Melt pressure measurements:	13
Melt temperature measurement:	10, at heating zone or analogue input
Types of temperature sensor:	Thermoelement type J, K, R, S, T, PT 100, 0/4-20 mA
Configurable control circuits:	2 (1x pump inlet pressure, 1x freely config)
Interfaces:	2x Ethernet, 4x USB, RS232, Profibus DP, Profinet, DVI
Monitor:	Siemens Industrial Thin Client ITC1900
Auxiliary power:	24 VDC, 20.4V-28.8V, approx. 2.5 A
Operating/storage temperature:	0 to +50°C / -20 to +60°C
Formula storage:	Internal Flash memory, USB, network
Logs:	Alarm, pressure, process data log

Upon request, maax[®] 600S offers you a full service

- All electrical equipment incl. the automation system supplied
- Supply and construction of all required mechanical assemblies and parts including connectors, flanges, bases, etc.
- Supply and integration of melt filtration systems
- Installation of electrical and mechanical assemblies
- Process technology optimization and guidance
- Commissioning incl. operator training
- "Round-the-clock" service with short response times