

# RANNIE 160T / GAULIN 160T

## HOMOGENIZER



The APV® Rannie 160T / Gaulin 160T homogenizer is a robust, positive displacement triplex, reciprocating plunger pump, equipped with an application-specific, single-stage homogenizing valve assembly with hydraulic actuation for precise control and performance.

The compact powerful machine is designed for a wide range of applications in the dairy, food and beverage, pharmaceutical, chemical and industrial industries.

### Benefits

- Versatility and flexibility: The new models are designed for a wide range of applications.
- Long service life with minimal maintenance: Durable, slow-speed power end that minimizes vibration and noise. The transmission also includes an internal gear transmission and enhanced oil treatment and cooling system.
- Wide array of configurations: The updated models include options such as pharmaceutical-grade specifications and explosion-proof designs, providing a larger range of uses and more specialized applications.
- User-friendly operator and service interface
- Choice of liquid ends: Select a Gaulin Monoblock or Rannie three-piece valve housing

### Standard Features

- Gaulin Monoblock or Rannie three-piece liquid end
- Ball or poppet pump valves
- Pressure gauges
- Pressure relief valve
- Weld-stub product connections
- 3-A sanitary design in stainless steel or duplex materials
- Hard metal coated long life plungers
- Hydraulic valve actuator for smooth and stable control
- Single or two stage homogenizing valve, to meet your application requirements
- Internal gear transmission
- Sanitary all welded frame
- Oil cooling system with external plate heat exchanger and temperature transmitter
- Oil filter including alarm
- All equipment wired to stainless steel control cabinet
- Emergency stop
- Set of tools
- Set of packings

### Standard Options

- Homogenizer or pump
- Manual or automatic hydraulic control system
- Pulsation dampener(s) on inlet and outlet, suitable for CIP
- Aseptic cylinder design, SIP compatible
- Alternative product connections e.g., tri-clamp, high-pressure outlet, dual inlet
- Inlet pressure gauge
- Outlet pressure gauge or transmitter
- Water saving serial plunger lubrication
- Plunger lubrication control package
- Energy saving Micro-Gap homogenizing valve
- Various homogenizing valve configurations
- Ceramic plungers
- Choice of materials for cylinder bloc, pump valve, homogenizing valves, packings, etc.
- Control cabinet with PLC or relay operation
- Main motor external cooling fan
- Start/stop buttons
- Enhanced spare parts kit

### Other Options on Request

- Various liquid end block designs for special applications
- Actuated pressure relief valve
- Vibration sensors
- Explosion-proof design
- Electro-polished wetted parts
- Surface finish report
- UFO – Oil Filtration system
- Documentation packages for material traceability, certification and cGMP support

RANNIE/THREE-PIECE VALVE HOUSING  
POPPET AND BALL TYPE VALVES

TYPE	CAPACITY		PRESSURE	
	gal/hr	l/h	psi	bar
90.140	6,910	26,000	3,000	210
85.140	6,160	23,000	3,625	250
80.140	5,460	20,500	3,900	270
75.140	4,770	18,000	4,350	300
70.140	4,160	15,500	5,075	350
65.140	3,590	13,500	5,800	400
60.140 *	2,990	11,000	7,250	500
54.140 *	2,400	9,100	8,700	600
50.140 *	2,050	7,750	10,150	700
42.140 *	1,320	5,000	14,500	1,000
38.140 *	1,010	3,850	17,400	1,200

\*Ball Valve only

GAULIN/MONO-BLOCK DESIGN  
POPPET AND BALL TYPE VALVES

TYPE	CAPACITY		PRESSURE	
	gal/hr	l/h	psi	bar
3.0	6,870	26,000	3,000	210
3.6	6,090	23,000	3,625	250
3.9	5,300	20,000	3,900	270
4.3	4,770	18,000	4,350	300
5.0	4,110	15,500	5,075	350
5.8	3,450	13,000	5,800	400
7.2 *	2,920	11,000	7,250	500
8.7 *	2,380	9,000	8,700	600

\*Ball Valve only

TECHNICAL SUMMARY	
Gross Weight	13,230 lb / 6,000 kg
Net Weight	12,565 lb / 5,570 kg
No. of Plungers	3
Lubrication Water Flow Rate	39.6 gal/hr / 150 l/h 13.2 gal/hr / 50 l/h**
Cooling Water Flow Rate	39.6 gal/hr / 150 l/h
Oil Volume	26.4 gal / 100 L

\*\* with Serial Lubrication Option

DIMENSIONS (L x W x H)	
Standard Machine	120 x 75 x 68 in / 3,060 x 1,910 x 1,720 mm
Packed on Pallet	148 x 86 x 83 in / 3,750 x 2,180 x 2,120 mm
Packed in Crate	148 x 86 x 93 in / 3,750 x 2,180 x 2,360 mm
Packed Volume	681 ft³ / 19.3 m³

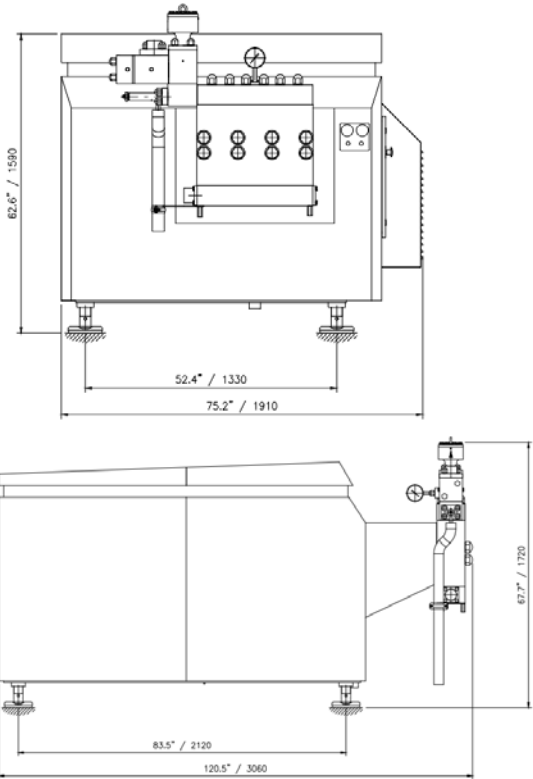
Note: Actual dimensions and weight depend on configuration.

SPXFLOW®

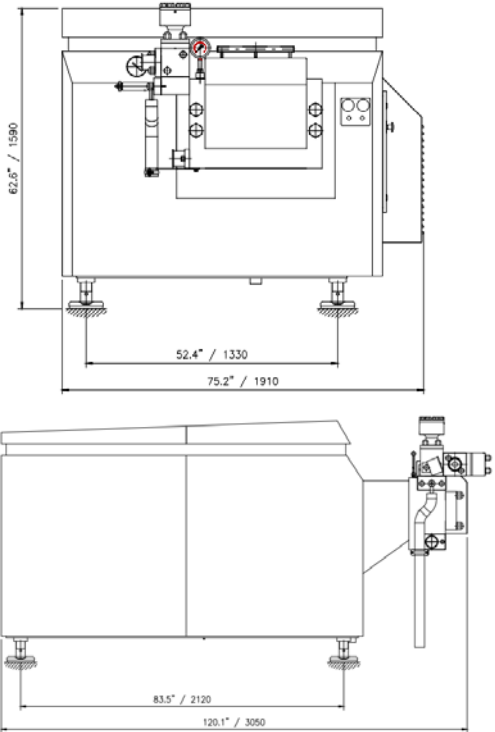
SPX FLOW, Inc. reserves the right to incorporate our latest design and material changes without notice or obligation. Design features, materials of construction and dimensional data, as described in this bulletin, are provided for your information only and should not be relied upon unless confirmed in writing. Please contact your local sales representative for product availability in your region. The green “>” is a trademark of SPX FLOW, Inc.

For more information, visit [www.spxflow.com/apv](http://www.spxflow.com/apv).

©2025 SPX FLOW, Inc.  
APV\_160T-Homogenizer\_DST\_US



RANNIE 160T



GAULIN 160T