

MAGSON MML - 4

Magnetically coupled centrifugal pumps
made of stainless steel



More than just pumps

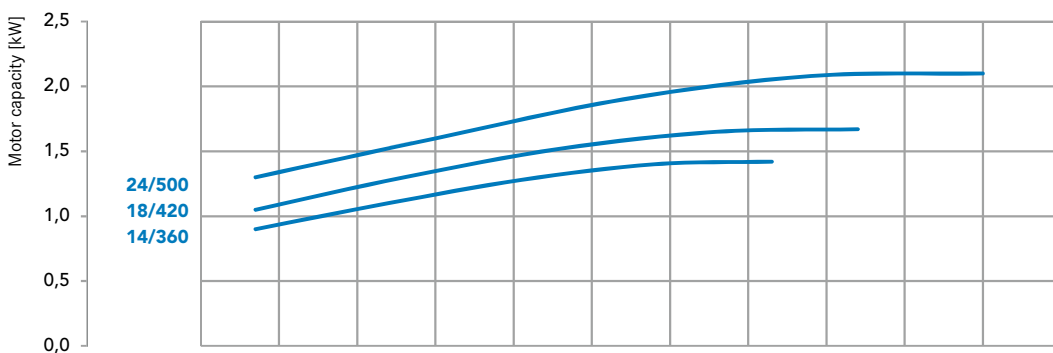
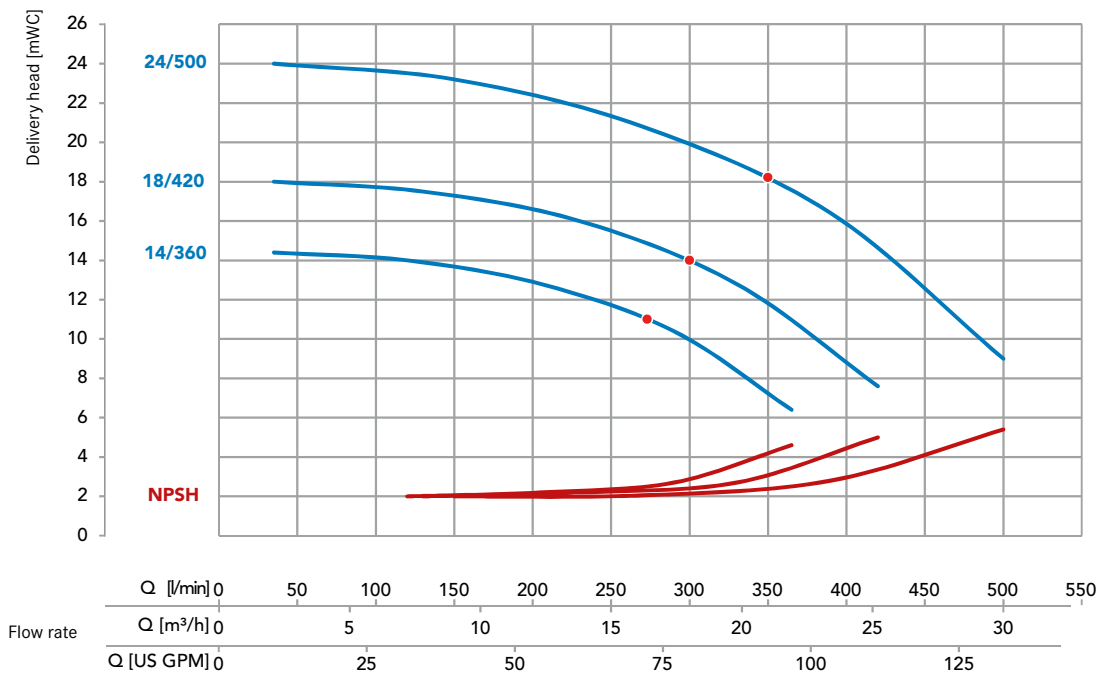


MML type 4



- Sealless
- Robust and casted casing
- Temperatures up to 150 °C
(higher temp. on request)
- Close coupled, single stage, horizontal back-pullout-design
- Flange connection according to DIN
- Suction side DN 50
- Discharge side DN 40

Characteristic curves



Determined with water of 20 °C;
measured values ± 10 %

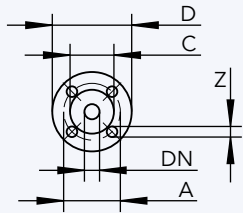
Technical data MML BG4

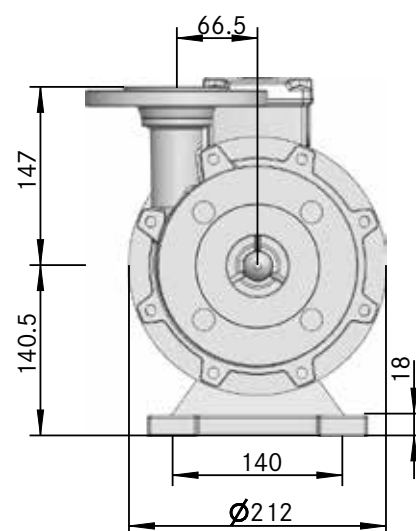
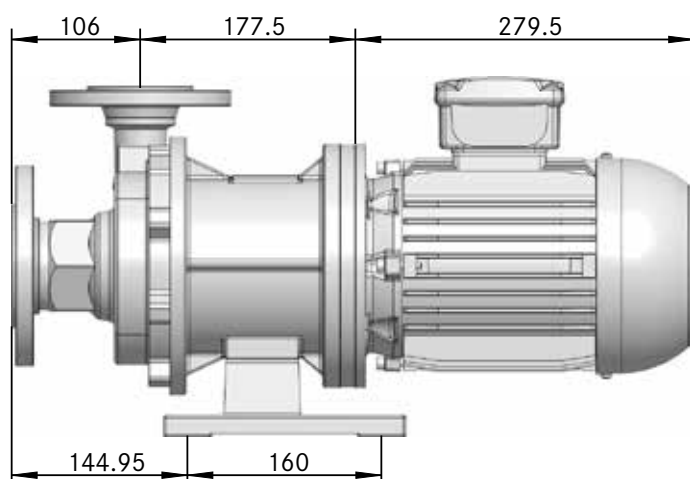
Type	14/360		18/420		24/500	
Material	Stainless steel 1.4408 (CF8M/AISI 316L)					
Max. delivery head [mWC] 50 Hz	14		18		24	
Max. volume flow in [l/min] 50 Hz	360		420		500	
Max. density in [g/cm ³] 50 Hz *	1,6	2	1,3	1,7	1,4	1,8
Motor capacity [kW]	2,2	3	2,2	3	3	4
Current rating (400 V, 50 Hz) [A] **	4,2	5,6	4,2	5,6	5,6	7,6
Rated speed in [rpm] 50 Hz	3000					
Suction port	DN 50					
Discharge port	DN 40					
Voltage in [V] ***	230/400					
Protection class	IP55					
Max. flow velocity [m/s]	Suction side 1 / discharge side 3					
Max. system pressure [bar]	15 / optional 25					
Max. temperature [°C]	150					

* approx. at max. volume flow (higher density possible when flow rate is reduced)

** depends on motor supplier

*** other voltages on request

	Dimensions [mm]	Connections DIN EN 1092-1		Length of motor		
		Suction	Discharge	2,2 kW	3 kW	4 kW
Dimension A	125	110				
Dimension C	102	88				
Dimension D	165	100				
Dimension DN	50	40				
Dimension L*				337	371	354
Dimension Z	18	18				



* Motor dimensions may differ according to manufacturer.



More than just pumps

FLUX is a world renowned brand for the highest standards in pump technology. It all began in 1950 with the invention of the electric drum pump. Today, FLUX offers a wide range of products which can be configured individually. For example, FLUX pumps are used in the chemical and pharmaceutical industries, in machine and plant construction, as well as in electroplating, sewage treatment plants, and the food industry.

Whether as a stand-alone or a system solution, FLUX quality means long useful life, excellent economic efficiency and a maximum of safety.

Apart from the outstanding FLUX product quality and reliability, our clients appreciate the expertise and dedication of our employees to customer service.

Today, FLUX-GERÄTE GMBH supplies pumps to almost one hundred countries world wide.

FLUX-GERÄTE GMBH

Process Pumps & Systems
August-Horch-Straße 2 · 51149 Köln
Postfach 920101 · 51151 Köln

Tel. +49 2203 9394-0
Fax +49 2203 9394-48

info-process@flux-pumpen.de
www.flux-pumps.com