

Lightnin GP2

GENERAL PURPOSE MIXER

The SPX FLOW Lightnin GP2 Mixer is designed for lab and industrial applications. The Lightnin GP2 mixer has an integrated digital control and feedback system that allows the user to precisely and easily control the mixing process. This coupled with Lightnin Impeller configuration knowhow, produces consistent results that is critical for validation and scale up.

“SPX FLOW Lightnin Mixing know how for process validation and high value process applications”

Ideal for simple blending, solids suspension, high-viscosity and gas-liquid applications.

Designed for **open tank applications**, the Lightnin GP2 is Multifunctional, Reversing and comes with a Countdown Timer.

- Brushless DC motor – reduced maintenance.
- Automatic overload protection - increased life
- Variable speed from 40 – 2000 rpm
- Torque 100Ncm (9 in-lbs.)
- .07KW (1/10HP)
- Through Stainless Steel Ø10mm (Ø3/8") Shaft
- Rod and Universal Clamping configurations
- Clockwise and counter clockwise rotation
- Countdown timer - mixing stops when time is completed
- Low energy LED mixing light
- Global availability, with UL, CSA, CE, RoHS certification, WEEE compliance and IP42 rating

- Adjustable Ø10mm (Ø3/8") shaft with one end turned down to Ø8mm (Ø5/16") – non retrofit models
- A310 64mm, (2.5") and A310 86mm, (3.4") impellers as standard – non retrofit models



LIGHTNIN GP2 - SPECIFICATIONS

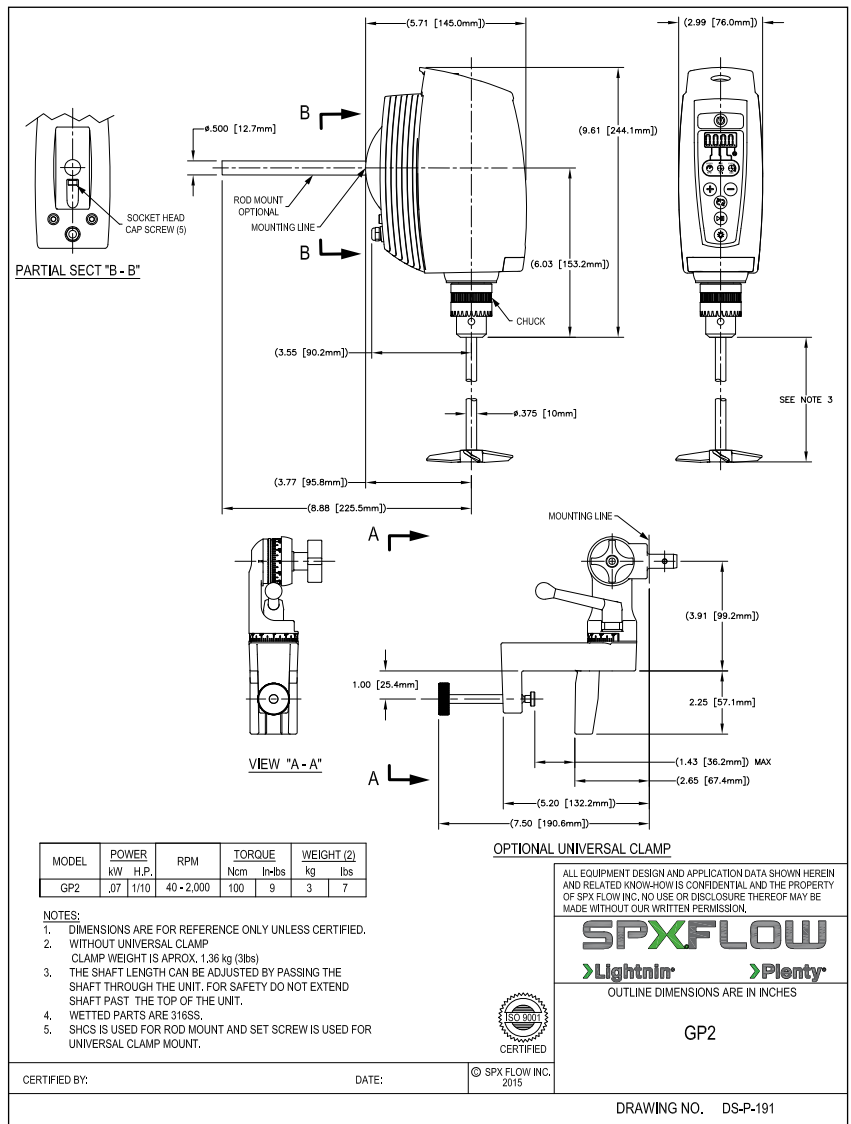
| | |
|--|---|
| Speed | 40 - 2000 rpm |
| Mechanical Power | 0.07Kw / 0.1HP |
| Torque | 100 Ncm / 9 in-lbs. |
| Input Power to Power Supply | Universal Single Phase 115V / 230V; 50 / 60 Hz |
| Electrical Power to Mixer | 24V DC, 4.75A, 90W |
| Weight | 3Kg / 7 Lbs |
| LED Accuracy Display | ± 1 rpm or 3% of reading (whichever is greater) |
| Modes | Countdown Timer, Clockwise, Counter Clockwise, xRx Mixing - Auto Reversing |
| Approvals/ Environmental | UL, CSA, CE, RoHS, WEEE Compliant, IP42 rating |
| Standard Equipment | Stainless Steel Chuck, Chuck key, 5" Mounting post, Power cord and operating instructions. |
| Standard Equipment (Non-Retrofit Models) | Mounting system (excluding stand and clamp), 10mm (3/8") stainless steel shaft, A310 Ø64mm (Ø2.5") and A310 86mm (3.4") impellers |
| Spares/Accessories | Full range of spares and accessories |



GP2 Rod Mount



GP2 Universal Clamp Mount



For other Sales locations click
www.spxflow.com/lightnin\contacts\where-to-buy\
 or use your SmartPhone and the QR Code



SPXFLOW

SPX FLOW, INC - LIGHTNIN & PLENTY MIXERS

135 Mt. Read Blvd., Rochester, NY 14611

P: +1 (888) 649-2378 (MIX-BEST), (US and Canada) or +1 (585) 436-5550

E: lightnin@spxflow.com ▪ www.spxflow.com/lightnin

SPX FLOW, Inc. reserves the right to incorporate our latest design and material changes without notice or obligation. Design features, materials of construction and dimensional data, as described in this bulletin, are provided for your information only and should not be relied upon unless confirmed in writing. Please contact your local sales representative for product availability in your region. For more information visit www.spxflow.com. The green ">>" and "><X" are trademarks of SPX FLOW, Inc.