

T100 Series Low Pressure Models T100E, T100F & T100H

API 674

Maximum Flow Rate: 366 l/min (96 gpm) 3292 BPD
Maximum Pressure: 145 bar (2100 psi)



WANNER
Hydra-Cell[®]
Seal-less Pump Technology



T100 Series low pressure model with
Stainless Steel pump head

Available
to Meet
API 674

- Seal-less design eliminates leaks, hazards and the expense associated with seals and packing
- Low NPSH requirements allow for operation with a vacuum condition on the suction - positive suction pressure is not necessary
- Can operate with a closed or blocked suction line and run dry indefinitely without damage, eliminating downtime and repair costs
- Unique diaphragm design handles more abrasives with less wear than gear, screw or plunger pumps
- Hydraulically balanced diaphragms to handle high pressures with low stress
- Lower energy costs than centrifugal pumps
- Rugged construction for long life with minimal maintenance
- Compact design and double-ended shaft provide a variety of installation options
- Hydra-Cell T100 Series pumps can be configured to meet API 674 Standards - consult factory for details

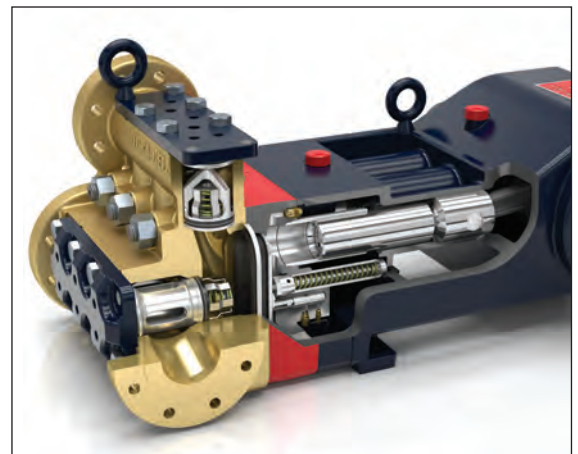
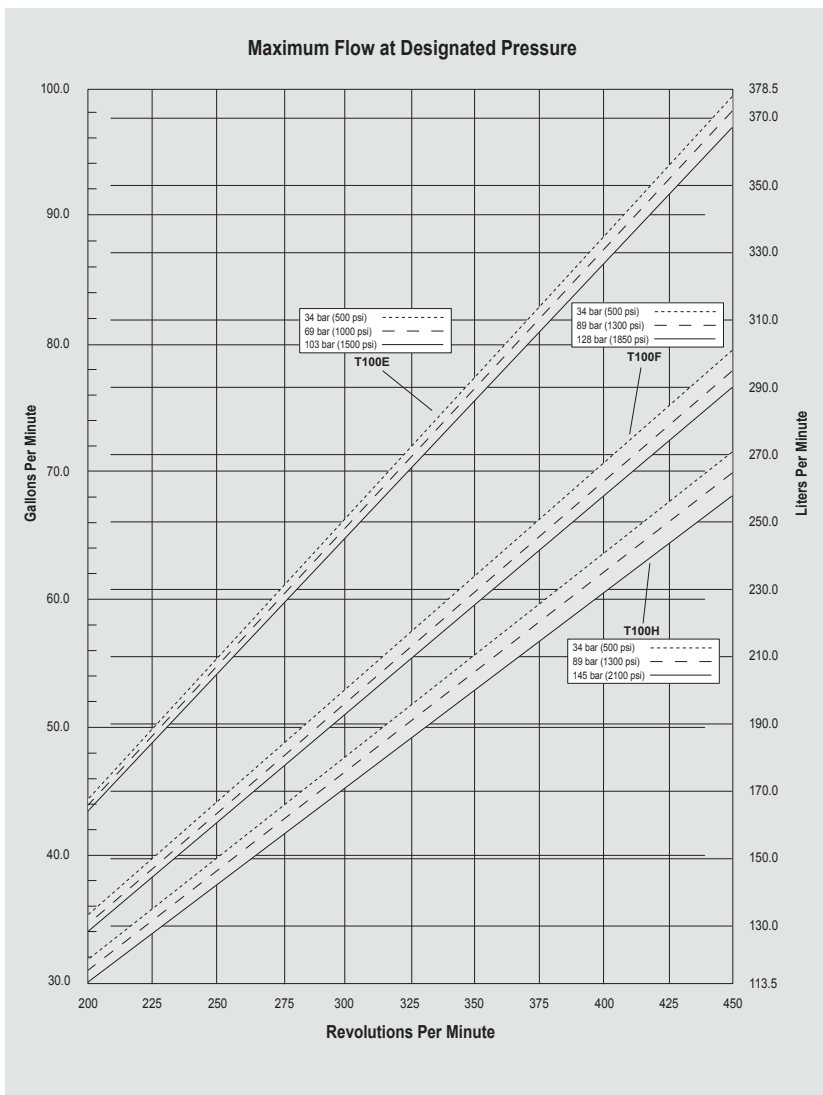
T100 Series Low Pressure Performance

Capacities

Flow					@ Pressure Rating		Pressure	
Model	Max. Input rpm	Max. Flow			psi	bar	Maximum Inlet Pressure	
		gpm	l/min	BPD			500 psi (34 bar)	
T100E	450	96.0	366.1	3292	1500	103	Maximum Discharge Pressure	
T100F	450	76.5	289.6	2623	1850	128	T100E:	1500 psi (103 bar)
T100H	450	68.0	257.8	2332	2100	145	T100F:	1850 psi (128 bar)
							T100H:	2100 psi (145 bar)

Consult factory when operating below 200 rpm.

Maximum Flow at Designated Pressure



T100 Series pumps feature the Hydra-Cell seal-less design, eliminating clean-up costs from leaking seals or packing and protecting operators from dangerous fluids such as those containing hydrogen sulfide.

Due to Wanner Engineering continuous improvement practices, performance data and specifications may change without notice.

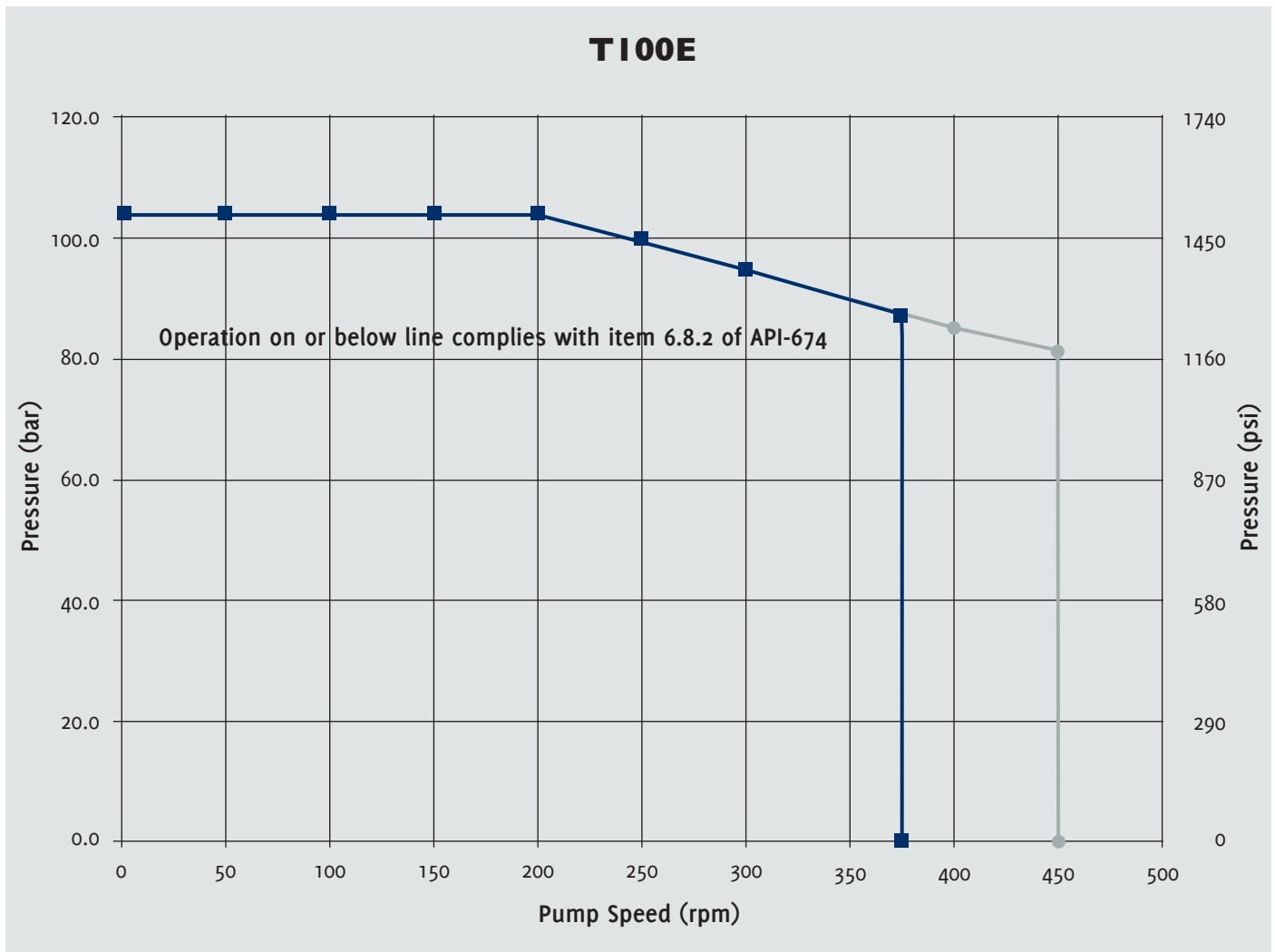
T100 Series Model T100E API 674 Performance

Capacities

Flow						Pressure	
Model	Max. Input rpm	Duty	Max. Flow @ 103 bar (1500 psi)			Maximum Inlet Pressure 34 bar (500 psi)	Maximum Discharge Pressure 103 bar (1500 psi)
			gpm	l/min	BPD		
T100E	450	Intermittent	96	366	3292		
	375	Continuous	81	306	2777		

Consult factory when operating below 200 rpm.

Maximum RPM at Designated Pressure



● Intermittent duty 2.5" plunger
Defined as up to 24/7 365 days pa

■ Continuous duty 2.5" plunger
Defined as 24/7 365 days pa

T100 Series Low Pressure Specifications

Flow Capacities

Model	Pressure bar (psi)	rpm	gpm	l/min	BPD
T100E	103 (1500)	450	96	366	3292
T100F	128 (1850)	450	76	290	2623
T100H	145 (2100)	450	68	258	2332

Delivery

	Pressure bar (psi)	gal/rev	liters/rev
T100E	34 (500)	0.220	0.831
	69 (1000)	0.217	0.821
	103 (1500)	0.214	0.809
T100F	34 (500)	0.177	0.669
	69 (1000)	0.173	0.655
	128 (1850)	0.170	0.644
T100H	34 (500)	0.159	0.601
	1000 (69)	0.155	0.587
	145 (2100)	0.152	0.575

rpm

Maximum:	450
Minimum:	200 Consult factory for speeds less than 200 rpm

Maximum Discharge Pressure

Metallic Heads:	T100E	103 bar (1500 psi)
	T100F	128 bar (1850 psi)
	T100H	145 bar (2100 psi)

Maximum Inlet Pressure 34 bar (500 psi)

Liquid Operating Temperature

Maximum:	82.2 °C (180 °F)
Minimum:	4.4 °C (40 °F)

Consult factory for temperatures outside this range

Maximum Solids Size 800 microns

Input Shaft Left or Right Side

Inlet Ports 3-1/2 inch Class 300 RF ANSI Flange

Discharge Ports 2 inch Class 900 RF ANSI Flange

Shaft Diameter 76.2 mm (3 inch)

Shaft Rotation Reverse (bi-directional)

Oil Capacity 19.4 liters (20.5 US quarts) See page 5 for oil selection and specification.

Weight

Metallic Heads:	499 kg (1100 lbs.)
-----------------	--------------------

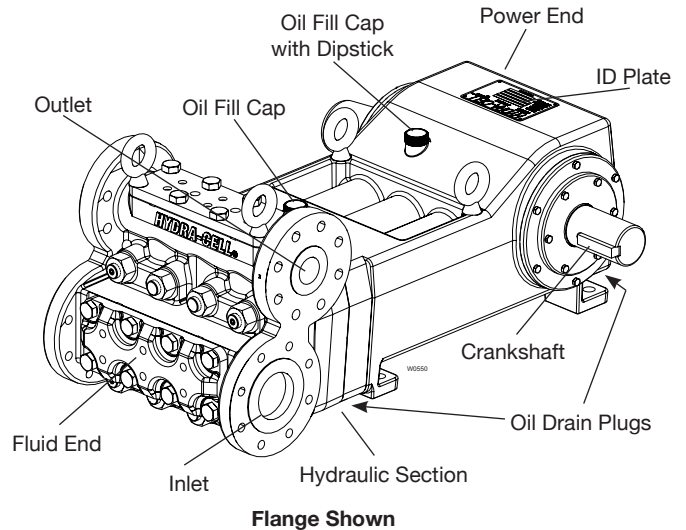
Fluid End Materials

Diaphragm Follower Screw:	316 Stainless Steel
Outlet Valve Retainer:	316 Stainless Steel
Plug-Outlet Valve Port:	316 Stainless Steel
Inlet Valve Retainer:	316 Stainless Steel

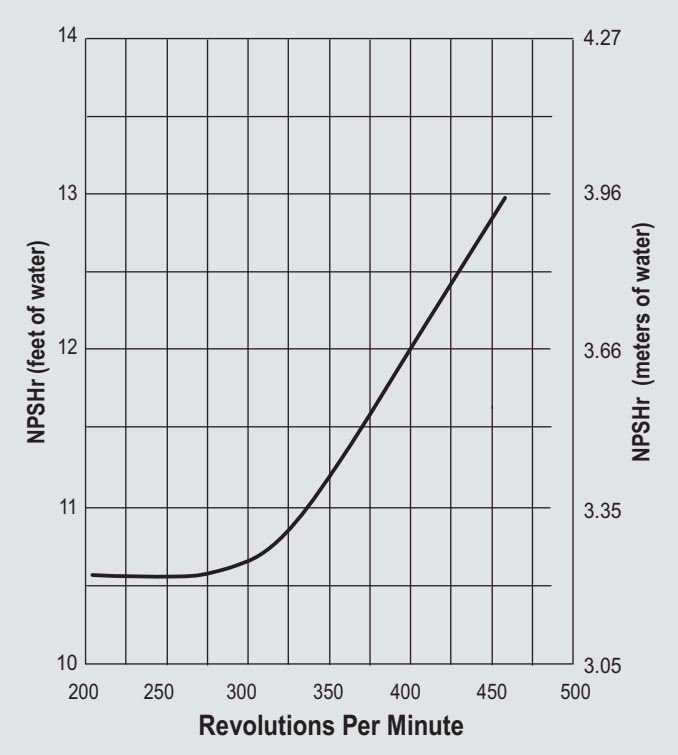
See page 5 for customer-specified fluid end materials choices.

Power End Materials

Crankshaft:	Forged Q&T Alloy Steel
Connecting Rods:	Ductile Iron
Crossheads:	12L14 Steel
Crankcase:	Ductile Iron
Bearings:	Spherical Roller/Journal (main) Steel Backed Babbitt (crankpin) Bronze (wristpin)



Net Positive Suction Head (NPSHr)



Calculating Required Horsepower (kW)*

$$\frac{\text{gpm} \times \text{psi}}{1,460} = \text{electric motor hp}^*$$

$$\frac{\text{lpm} \times \text{bar}}{511} = \text{electric motor kW}^*$$

* hp (kW) is required application power.

Attention!

When sizing motors with variable speed drives (VFD): It is very important to select a motor and a VFD rated for constant torque inverter duty service and that the motor is rated to meet the torque requirements of the pump throughout desired speed range.

T100 Series Low Pressure How to Order

Ordering Information

1	2	3	4	5	6	7	8	9	10	11	12	13	14
T	1	0	0		R								

A complete T100 Series Low Pressure Model Number contains 14 digits including 9 customer-specified design and materials options, for example: T100ERDGHFEHAC.

Low Pressure

Digit	Order Code	Description
1-4	T100	Pump Configuration Shaft-driven API 674 - Contact Wanner International
5	E F H -	Performance Max. 366 l/min (96 gpm) 3292 BPD @ 103 bar (1500 psi) Max. 289 l/min (76 gpm) 2623 BPD @ 128 bar (1850 psi) Max. 257 l/min (68 gpm) 2332 BPD @ 145 bar (2100 psi) ATEX - Contact Wanner International <i>(Note: ATEX 2014/34/EU Certified, Category 2, Zone 1, Hazardous Liquids)</i>
6	R	Pump Head Version ANSI Flange Ports (RF on Inlet / RTJ on Discharge)
7	D G S T	Pump Head Material Nickel Aluminum Bronze (NAB) Duplex Alloy 2205 316L Stainless Steel Hastelloy CX2M
8	G T	Diaphragm & O-ring Material FKM Buna-N
9	D H N T	Valve Seat Material Tungsten Carbide* 17-4 Stainless Steel Nitronic 50 Hastelloy C
10	D F N T	Valve Material Tungsten Carbide* 17-4 Stainless Steel Nitronic 50 Hastelloy C
11	E T	Valve Springs Elgiloy Hastelloy C

*Tungsten Carbide valve seat and disc are a matched set and must be purchased together.

Digit	Order Code	Description
12	H S T	Valve Spring Retainers 17-7 Stainless Steel 316 SST Hastelloy C
13	A B E H	Hydra-Oil 10W30 standard-duty oil 40-wt. Food-contact oil 15W50 high-temp severe-duty synthetic oil
14	C O X Y	Oil Level Monitor Cover Float switch, normally closed Float switch, normally open Float switch, explosion proof, normally closed No switch

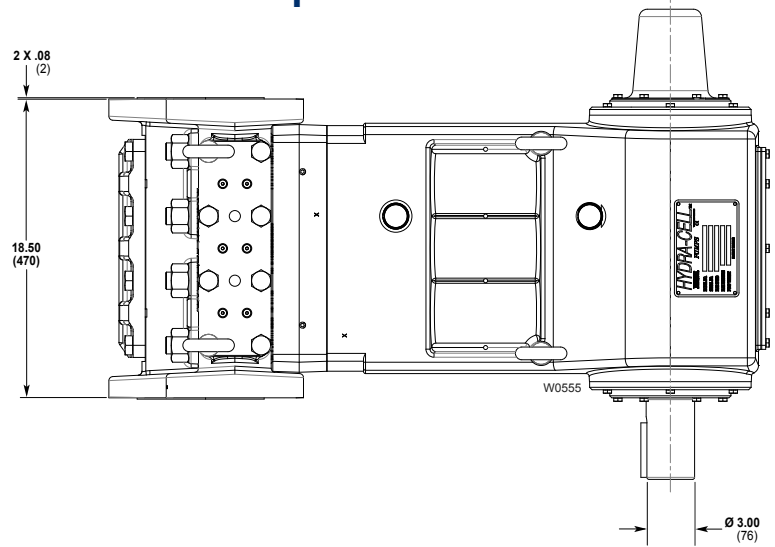
Note: The Oil Level Monitor Cover is an assembly that replaces the previous back cover on T100 Series pumps. It contains a float switch assembly that can trigger an alarm or shutdown when pre-defined levels of high or low oil are reached. It may also be ordered without a float switch cover.



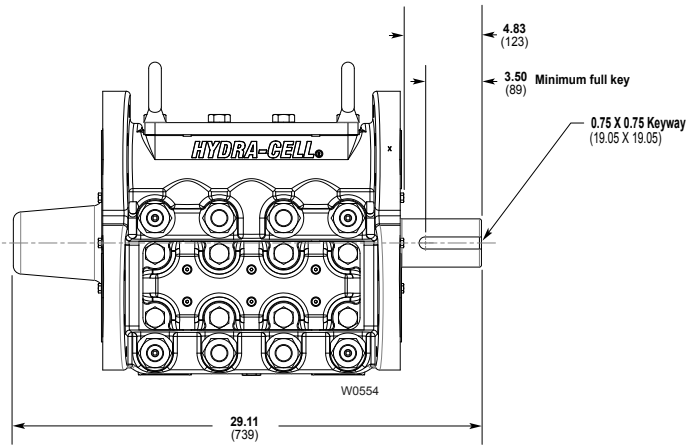
T100 Series Low Pressure Dimensions

Flanged Version inches (mm)

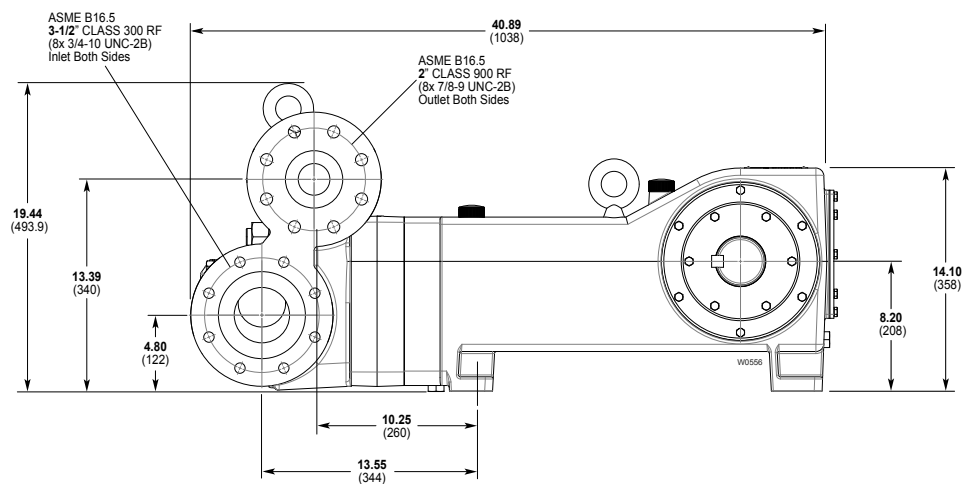
Top View



Front View



Side View





WANNER ENGINEERING - WORLD HEADQUARTERS & MANUFACTURING
Minneapolis USA
t: (612) 332-5681
e: sales@wannereng.com

WANNER PUMPS
Kowloon HONG KONG
t: +852 3428 6534
e: sales@wannerpumps.com

WANNER INTERNATIONAL
Hampshire UK
t: +44 (0) 1252 816847
e: sales@wannerint.com

WANNER ENGINEERING
Latin American Office
t: +55 (11) 4081-7098
e: sales@wannereng.com

WANNER PUMPS
Shanghai CHINA
t: +86-21-6876 3700
e: sales@wannerpumps.com