



VOTATOR® ORIGIN SERIES SCRAPED SURFACE HEAT EXCHANGER

Simple. Versatile. Dependable.

Designed to provide powerful results for light duty, low-to-medium viscosity applications that demand high productivity. Its modular design enables flexible adaptation to your specific processing needs, while easy maintenance and serviceability reduces operating expenses.

To enable process customization with either stainless steel or duplex stainless steel, there are three shaft diameters available, with a self-loading hinged scraper blade as a standard offering and a floating flat blade for various products including particulates.

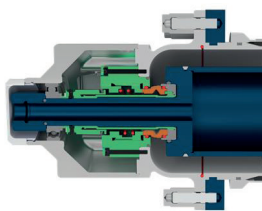
Three lengths are available to meet the following surface area requirements: 5x20 (2.1 ft²), 5x40 (4.3 ft²), and 5x60 (8.6 ft²). Additional options include rotor heating, insulation and double mechanical seals.

Why choose the Votator Origin

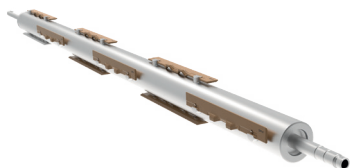
- Customization, configuration flexibility
- Vertical and horizontal orientations
- Application adaptability
- Easy and quick maintenance
- New hinged scraper blade design
- Single and double mechanical cartridge seal options
- Support by skilled and experienced engineers



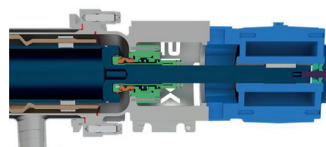
DESIGN FEATURES AND OPTIONS



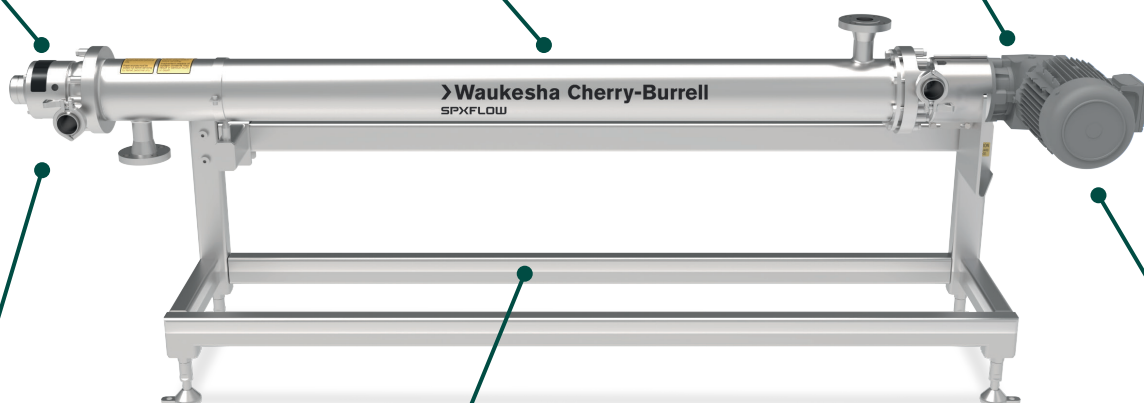
Opposite drive end with a roller bearing and cartridge seal. Easy maintenance, thermal expansion - and tube removal.



Shaft and blade system selection based on application needs to optimize heat transfer.



Direct drive shaft assembly with precise alignment and smaller footprint.

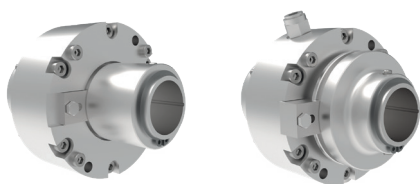
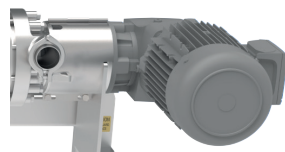


Tangential product port and bearing housing to provide gentle product flow path and multiple positioning.



Horizontal and vertical frame orientations fully-welded with elevated feet for a sanitary design with up to 4 cylinders on a vertical frame or up to 6 cylinders on a horizontal frame.

One-piece drive end head and pedestal for a simplistic and sturdy design.



Single and double mechanical cartridge seal options for various process and hygienic requirements.



Unique scraper blade designs including floating or hinged designs for efficient blade positioning.

SPXFLOW®

SPX FLOW, Inc. reserves the right to incorporate our latest design and material changes without notice or obligation. Design features, materials of construction and dimensional data, as described in this bulletin, are provided for your information only and should not be relied upon unless confirmed in writing. Please contact your local sales representative for product availability in your region. For more information visit www.spxflow.com.

The green “>” and “X” are trademarks of SPX FLOW, Inc.

ISSUED 03/2024 WCB-Origin-FLR-GB-0223 COPYRIGHT © 2024 SPX FLOW