

### Bill of Materials

ITEM	QTY	DESCRIPTION
1	1	INLET STRAINER
2	2	LIQUID TRAP
3	1	BLACKMER HD612C COMPRESSOR
4	1	DISCHARGE RELIEF VALVE
5	2	MANUAL SHUT OFF VALVE
6	1	WEG 11kW ATEX 4P DOL MOTOR
7	1	FABRICATED BASEPLATE

### System Weight (Approx)

Description	Weight (KG)
COMPRESSOR	TBC
MOTOR	TBC
BASE	TBC
STRAINER	TBC
VALVES	TBC
LIQUID TRAPS	TBC
PIPEWORK	TBC
TOTAL SYSTEM WEIGHT	TBC

### Process Termination Schedule

Description	Size	Type	Service
TP1	2"	TBC	PROCESS CONNECTION
TP2	2"	TBC	PROCESS CONNECTION
TP3	TBC	TBC	PRESSURE RELIEF VALVE
TP4	TBC	TBC	LIQUID TRAP DRAIN
TP5	TBC	TBC	LIQUID TRAP DRAIN

### System Specification

Blackmer Two Stage Compressor

Model Number - HD612C

Product - LPG Gas Mixture  
 Feed - Various locations around the plant  
 Inlet Temperature - UK Ambient  
 Compressor Speed - 740 rpm  
 Transfer Rate - 160 kg/hr  
 Inlet Operating Pressure - 1100-1700 mBara  
 Outlet Operating Pressure - 7.5 Barg max  
 ATEX Classification - II 2G EExd IIB T176 DegC

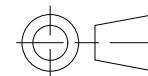
**Status Code**  
 1 - For Review/Approval  
 \*Please Return Marked Up Prints By Date Stated\*  
 2 - Approved For Manufacture  
 3 - Certified Final  
 4 - For Information Only

### Reference Drawings

Rev	Drawn	Authorised	Date	Description	Status
0	RC	GW	29.10.20	New Drawing	2

©  
 This drawing and its content must not be copied or disclosed to a third party without explicit consent from Axflow

**Tolerances:**  
 Nozzle Position : N/A  
 Fabrication : +/- 1.0mm (0-2000mm)  
 Fabrication : +/- 3.0mm (Over 2000mm)  
 Machining : +/- 0.5mm (X)  
 Machining : +/- 0.25mm (X,X)  
 Machining : +/- 0.125mm (X,XX)



**General Notes (U.N.O.)**  
 1. Do Not Scale.  
 2. All Dimensions in MM.

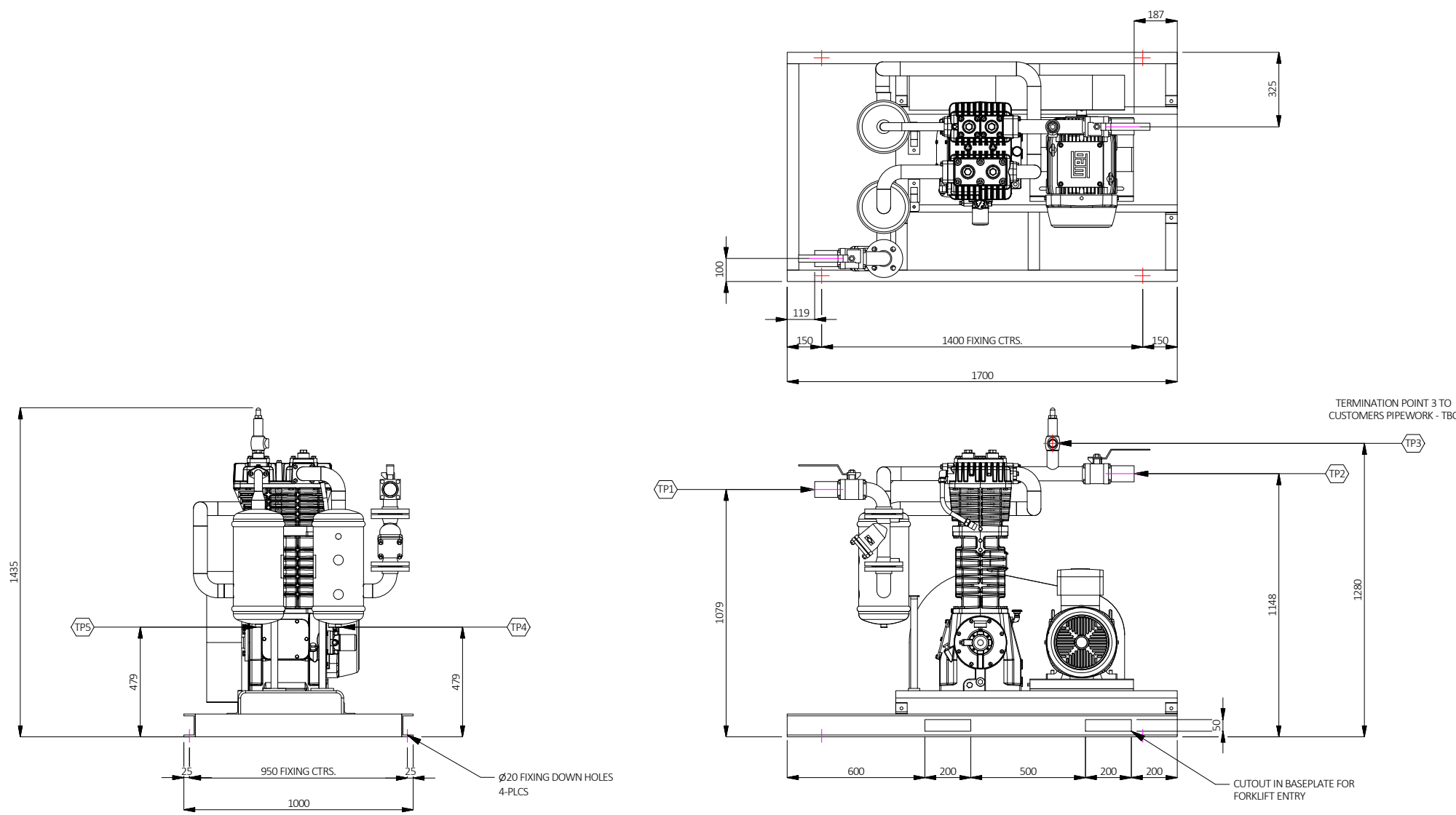
**Slough (Head Office)**  
 820 Yeovil Road  
 Slough Trading Estate, Slough SL1 4JA  
 Tel: 01753 255 600  
 Email: [info@axflow.co.uk](mailto:info@axflow.co.uk) [www.axflow.co.uk](http://www.axflow.co.uk)  
**Radstock Office** **Huddersfield Office**  
 Tel: 01761 433 285 Tel: 01484 543 649  
**Scotland Office** **Durham Office**  
 Tel: 01224 729 367 Tel: 01325 327 322

### Drawing Title:

GENERAL ARRANGEMENT DRAWING FOR A  
 BLACKMER HD612C COMPRESSOR

**AxFlow Contract No:** UPQUO20200624008

**Drawing No:** 09093-HD612C-GA-2128  
**Rev** 0



Status Code	Rev	Drawn	Authorised	Date
0	RC	GW		29.10.20

Reference Drawings	Description	Status
	New Drawing	2

© This drawing and its content must not be copied or disclosed to a third party without explicit consent from Axflow

**Tolerances:**  
 Nozzle Position : N/A  
 Fabrication : +/- 1.0mm (0-2000mm)  
 Fabrication : +/- 3.0mm (Over 2000mm)  
 Machining : +/- 0.5mm (X)  
 Machining : +/- 0.25mm (X,X)  
 Machining : +/- 0.125mm (X,XX)

**General Notes (U.N.O.)**  
 1. Do Not Scale.  
 2. All Dimensions in MM.

**AxFlow**  
 Slough (Head Office)  
 820 Yeovil Road  
 Slough Trading Estate, Slough SL1 4JA  
 Tel: 01753 255 600  
 Email: [info@axflow.co.uk](mailto:info@axflow.co.uk) [www.axflow.co.uk](http://www.axflow.co.uk)

**Radstock Office**  
 Tel: 01761 433 285

**Huddersfield Office**  
 Tel: 01484 543 649

**Scotland Office**  
 Tel: 01224 729 367

**Durham Office**  
 Tel: 01325 327 322

<b>Drawing Title:</b> GENERAL ARRANGEMENT DRAWING FOR A BLACKMER HD612C COMPRESSOR	
<b>AxFlow Contract No:</b>	UPQUO20200624008
<b>Drawing No:</b>	09093-HD612C-GA-2128
SHEET 2 OF 2	<b>Rev</b> 0