



AQ300

DISCRETE ANALYZER FOR ENVIRONMENTAL TESTING

AQ300 is a low cost flexible analyzer that uses the principle of discrete analysis where each test occurs in a separate or discrete reaction vessel.



AQ300

AQ300 is ideal for laboratories with smaller workloads requiring varied tests on different samples and when individual results are needed immediately.

USEPA, ASTM, ISO

and other international regulatory compliant methods are available.

METHODS INCLUDE

- Alkalinity**
- Ammonia**
- Chloride**
- Cyanides**
- Nitrate/Nitrite**
- Nitrite**
- Phenol**
- Phosphate, ortho**
- Phosphorus, total**
- Silicate**
- Sulfate**
- Total Kjeldahl Nitrogen**

PLUS MANY MORE



HOW DOES THE AQ300 WORK?

The AQ300 robotic sampling arm works in conjunction with a stepper motor-driven syringe that is responsible for aspirating, dispensing and mixing accurate and precise quantities of sample and reagent in miniaturized test tubes called reaction wells.

The sample and reagents are incubated in heated reaction wells until reaction is complete. A single aliquot is then transferred into a 10mm pathlength optical glass cuvette. The absorbance is read on the stationary reactant to ensure the best possible signal to noise ratio.

Each sample is read at the same position in front of the detector in the 10mm glass cuvette, similar to SEAL colorimetric flow systems, known for their high reproducibility and lowest detection limits. This eliminates issues of reaction well variability and scratching found in direct read discrete systems so improves reproducibility. In the SEAL AQ series, liquid is moved not the tray - fewer moving parts equals higher reliability.

Once the absorbance is read, the glass cuvette is thoroughly cleaned and checked, ensuring no carryover or cross contamination.

▶ **As a market leader**, SEAL has over 1,000 applications available and under continual development. Markets include water, wastewater, soil, plant, fertilizer, food and beverage. Please contact us for your specific application.

AQ300 – The latest in discrete analyzer technology

Designed by chemists for chemists.

ADVANTAGES AND BENEFITS



- ~ 100% optical glass stop-flow cuvette
- ~ 10 mm optimum path length



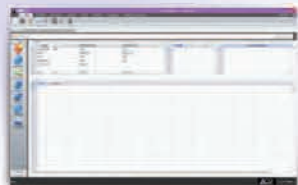
- ~ Low cost, disposable wells used for each discrete reaction
- ~ Constant heating and programmable reaction time ensure reaction reaches completion



- ~ Optional integrated cadmium coil reduction for nitrate/nitrite determination
- ~ Cadmium coil is sealed and valve controlled
- ~ In situ coil regeneration is fully automated



- ~ Unique probe washer for cleaning sample probe between sample and reagent
- ~ Eliminates cross contamination



- ~ Highly flexible software designed with user input
- ~ QCPro™ Data Quality System – allows the user to specify QC types, limits and corrective actions



- ▶ **True unattended operation – including ability to run overnight**
- ▶ **Automated standard preparation and dilution of over range samples**
- ▶ **Tests programmable per sample to reduce analysis time**
- ▶ **Add samples after a run has started**
- ▶ **Total volume per test only 500 – 600 μ L**
- ▶ **LIMS compatible – export in .csv format**
- ▶ **Simple user maintenance**

SEAL
Analytical



PLEASE VISIT

www.seal-analytical.com

or contact your local SEAL Analytical representative about your specific application.

Colorimetric Nutrient Analyzers

DISCRETE ANALYZERS



AQ300



AQ2



AQ400

SEGMENTED FLOW ANALYZERS



AA100



AA3



QUATRO 39

50 Years Experience in Environmental Analysis Built Into Every Analyzer

50 years experience in designing, developing and manufacturing automated wet chemistry analyzers specifically for very low detection levels in environmental applications has helped SEAL to apply the most useful, easy to use features into the SEAL range of Discrete and Segmented Flow analyzers. The SEAL analyzers are widely acknowledged as the best for environmental analysis, giving you everything you need to achieve equal or superior results to the manual and approved laboratory methods the SEAL analyzer replaces.

FOR YOUR SAMPLE PREPARATION — BLOCK DIGESTION : TKN, METALS

SEAL's enhanced computer controlled **BD50** digestion block is ideal for speeding up the acid digestion process for soils, water samples and food products. It is especially suited to Total Kjeldahl Nitrogen and Phosphorous methods. The solid aluminium heating grid delivers even heating across the whole block and ensures reproducible results. Please see our detailed brochure for further information.



THOMAS CAIN (a SEAL Analytical brand) manufactures automated sample preparation and digestion systems for the analysis of trace metals for environmental laboratories. From the **SmartBlock** – a simple manual digestion block – to the **DEENA** acid digestion system, that fully automates the sample preparation and digestion for EPA and other laboratory methods.



www.seal-analytical.com

SEAL Analytical is a global company with offices worldwide - contact us at:

SEAL Analytical, Inc.
6501 West Donges Bay Road
Mequon, WI 53092
United States
Tel: +1 (262) 241 7900
Fax: +1 (262) 241 7970
sales@seal-us.com

SEAL Analytical Ltd.
Unit 3 Talisman Business Centre
Duncan Road
Park Gate
Southampton, SO31 7GA
United Kingdom
Tel: +44 (0) 1489 864 400
Fax: +44 (0) 1489 880 531
sales@seal-us.com

SEAL Analytical GmbH
Werkstrasse 5
D-22844 Norderstedt
Germany
Tel: +49 (0)40 60 9292 9-00
Fax: +49 (0)40 60 9292 9-02
info.germany@seal-analytical.com

SEAL Analytical Shanghai
Room 413, 12th Building,
No. 128 Xiangyin Road,
Shanghai, 200433
China
Tel: +86 21 3362 5002
Fax: +86 21 3362 5002

SEAL Analyzers are monitoring environmental samples in every corner of the globe. They are manufactured in the USA. Engineering and chemistry support is provided from SEAL global facilities in USA, Germany, England and China along with a worldwide network of specialist distributors.

COMPREHENSIVE SUPPORT

We offer comprehensive applications, technical service and software support.

INCLUDING

- ▶ A choice of preventative maintenance and service contracts to meet your specific requirements
- ▶ In-house and online training
- ▶ Guaranteed availability of genuine consumables and spare parts
- ▶ Adaptation of methods to specific requirements such as matrix, range or detection limit
- ▶ Continuous in-house development of software to incorporate new customer requested features