



AA100

**NEXT GENERATION
SEGMENTED FLOW ANALYZER**

A new generation of flow analyzers from SEAL – focusing on simplicity of use

The AA100 is designed to be a sleek system that is reliable and simple to use.

AA100



The dual channel AA100 is ideal for all types of water analysis for laboratories needing a simple, uncomplicated system to run dedicated chemistries. Its light weight and compact design means it can sit in any orientation on the bench.

USEPA, ASTM, ISO

and other international regulatory compliant methods are available.

APPLICATIONS INCLUDE

Water & Wastewater
Drinking Water
Soil & Plants

PARAMETERS INCLUDE

Ammonia
Chloride
Cyanide
Nitrate+Nitrite
Nitrite
Phenol
Phosphate
Total Nitrogen
Total Phosphorous

HOW DOES THE AA100 WORK?

A basic SFA system consists of an autosampler, a peristaltic pump, a chemistry manifold, a detector and data acquisition software. Sample and reagents are pumped continuously through the chemistry manifold. Air bubbles are introduced at regular intervals forming unique reaction segments which are mixed using glass coils. Glass is ideal, as it is inert, stays clean and enables easy visual checks.

In SFA, all reactions run to completion. The ratio of sample to reagents in the detector reaches a constant maximum value – the steady-state condition. This ensures maximum sensitivity resulting in lowest detection limits and exceptional reproducibility. Variations in reaction time, temperature and sample matrix do not affect the results as they do in other colorimetric techniques, such as flow injection analysis, where the reaction is not brought to completion.

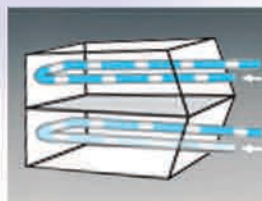
▶ **As a market leader**, SEAL has over 1,000 applications available and under continual development. Markets include water, wastewater, soil, plant, fertilizer, food and beverage. Please contact us for your specific application.

The new AA100 Segmented Flow Analyzer is a fully automated instrument designed specifically for environmental and industrial testing laboratories.

ADVANTAGES AND BENEFITS



Integrated distillation unit for Cyanide, Phenol and Ammonia.



Ammonia analysis by gas diffusion manifold eliminating pH and salinity issues.



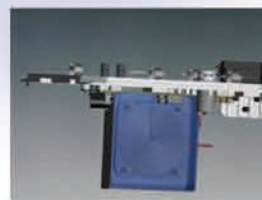
The unique AA100 digital photometer provides high sensitivity, wide dynamic ranges and low detection limits. LED light sources are used.



The high quality multi-speed metal pump ensures regular reproducible dosing of liquid.



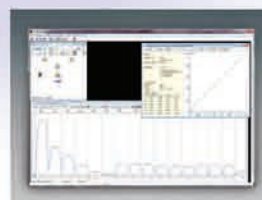
The chemistry manifold is comprised of close-tolerance glass components, which are chemically inert and allow for easy visual check of operation.



The new, unique software controlled heating unit provides consistent even heating, ensuring stable results.



The AA100 carousel sampler is robust and simple to use. Samples can be added at any time during the run.



Instrument control and data acquisition is carried out through the intuitive, easy to use AACE Lite software package.

DIMENSIONS

610 mm
X
295 mm
X
290 mm (h)

WEIGHT
only **13 kg**

OTHER FEATURES

- ▶ **Compact design – small footprint**
- ▶ **Up to 2 channels per system**
- ▶ **Simplified tubing – easy to use**
- ▶ **Intuitive software – easy to learn**
- ▶ **Add samples once run has started**
- ▶ **Up to 120 tests per hour**
- ▶ **Low cost per test**

SEAL
Analytical



PLEASE VISIT

www.seal-analytical.com

or contact your local SEAL Analytical representative about your specific application.

Colorimetric Nutrient Analyzers

DISCRETE ANALYZERS



AQ1



AQ2



AQ400

SEGMENTED FLOW ANALYZERS



AA100



AA3



QUATRO 39

50 Years Experience in Environmental Analysis Built Into Every Analyzer

50 years experience in designing, developing and manufacturing automated wet chemistry analyzers specifically for very low detection levels in environmental applications has helped SEAL to apply the most useful, easy to use features into the SEAL range of Discrete and Segmented Flow analyzers. The SEAL analyzers are widely acknowledged as the best for environmental analysis, giving you everything you need to achieve equal or superior results to the manual and approved laboratory methods the SEAL analyzer replaces.

FOR YOUR SAMPLE PREPARATION — BLOCK DIGESTION : TKN, METALS

SEAL's enhanced computer controlled **BD50** digestion block is ideal for speeding up the acid digestion process for soils, water samples and food products. It is especially suited to Total Kjeldahl Nitrogen and Phosphorous methods. The solid aluminium heating grid delivers even heating across the whole block and ensures reproducible results. Please see our detailed brochure for further information.



THOMAS CAIN (a SEAL Analytical brand) manufactures automated sample preparation and digestion systems for the analysis of trace metals for environmental laboratories. From the **SmartBlock** – a simple manual digestion block – to the **DEENA** acid digestion system, that fully automates the sample preparation and digestion for EPA and other laboratory methods.



www.seal-analytical.com



SEAL Analytical is a global company with offices worldwide - contact us at:

SEAL Analytical, Inc.
6501 West Donges Bay Road
Mequon, WI 53092
United States
Tel: +1 (262) 241 7900
Fax: +1 (262) 241 7970
sales@seal-us.com

SEAL Analytical Ltd.
Unit 3 Talisman Business Centre
Duncan Road
Park Gate
Southampton, SO31 7GA
United Kingdom
Tel: +44 (0) 1489 864 400
Fax: +44 (0) 1489 880 531
sales@seal-us.com

SEAL Analytical GmbH
Werkstrasse 5
D-22844 Norderstedt
Germany
Tel: +49 (0)40 60 9292 9-00
Fax: +49 (0)40 60 9292 9-02
info.germany@seal-analytical.com

SEAL Analytical Shanghai
Room 413, 12th Building,
No. 128 Xiangyin Road,
Shanghai, 200433
China
Tel: +86 21 3362 5002
Fax: +86 21 3362 5002

SEAL Analyzers are monitoring environmental samples in every corner of the globe. They are manufactured in the USA. Engineering and chemistry support is provided from SEAL global facilities in USA, Germany, England and China along with a worldwide network of specialist distributors.

COMPREHENSIVE SUPPORT

We offer comprehensive applications, technical service and software support.

INCLUDING

- ▶ A choice of preventative maintenance and service contracts to meet your specific requirements
- ▶ In-house and online training
- ▶ Guaranteed availability of genuine consumables and spare parts
- ▶ Adaptation of methods to specific requirements such as matrix, range or detection limit
- ▶ Continuous in-house development of software to incorporate new customer requested features

Distribuido por:
www.axflow.es



AxFlow