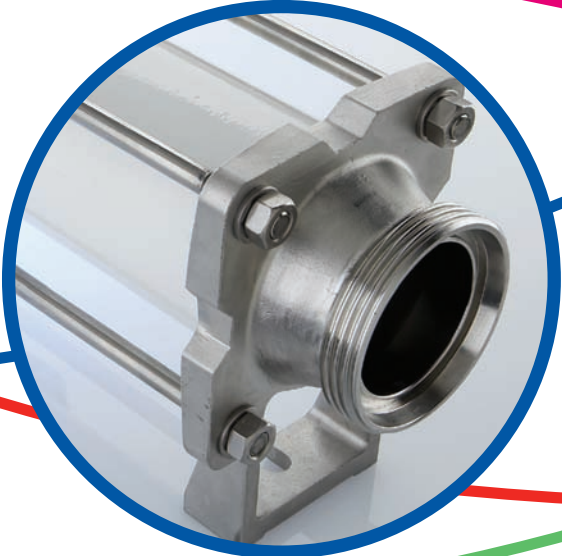
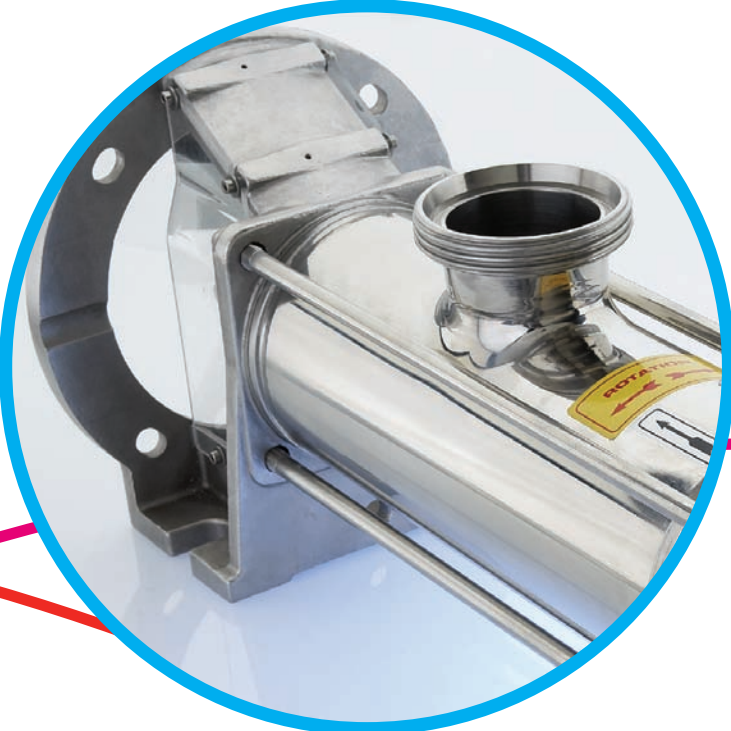
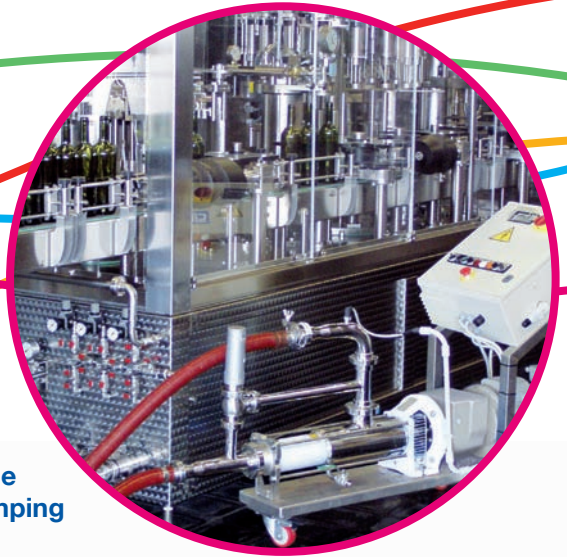


# Helios Range



Wine  
pumping



## Features & Benefits

---

<b>Capacity</b>	up to 180m <sup>3</sup> /h
<b>Pressure</b>	up to 24 bar
<b>Temperature</b>	-10°C up to 100°C

---

### Typical applications include:

- Wine, beer, carbonated drinks
  - Fruit juices, purées, concentrates
  - Dairy products; milk, cream, yoghurt
  - Sauces & preserves; honey, jam, mayonnaise
  - Confectionery; fondant, chocolate
  - Fats & oils; cod liver oil, corn oil, vegetable oil
- 

“Designed specifically for hygienic applications, including shear sensitive or delicate products, with solids in suspension”



### Hygienic design

The one piece, polished suction chamber is easily cleaned and has no areas where product could collect, reducing the risk of contamination.

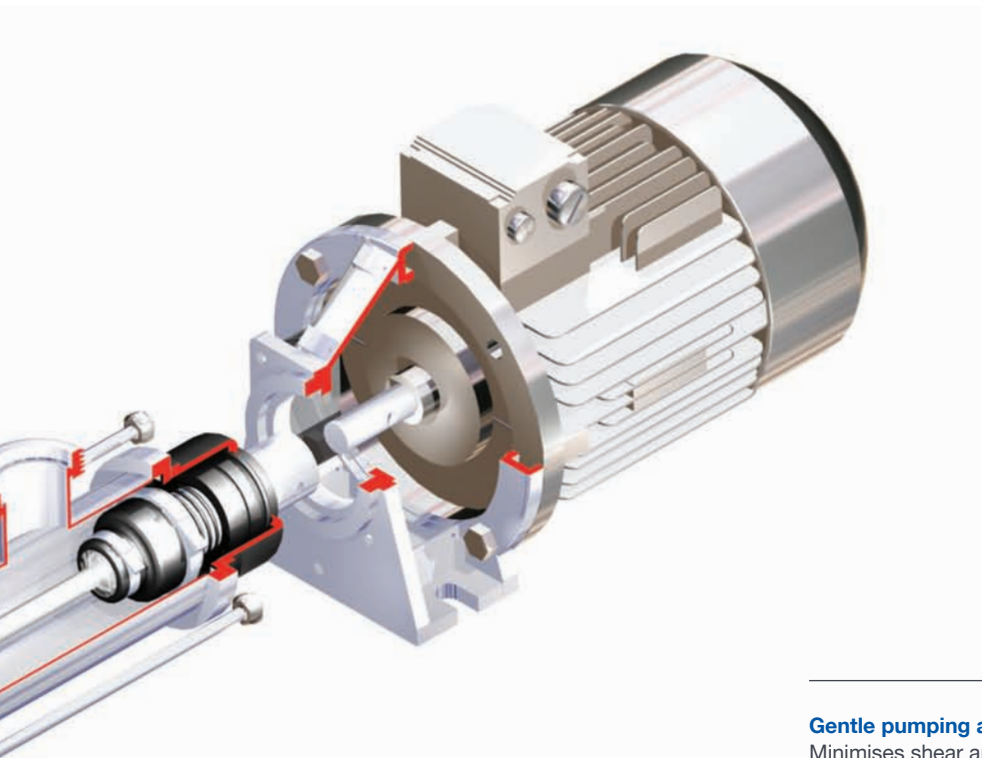
### Materials of construction

Polished stainless steel is used for all metal parts in contact with the product.

Food approved rubber in white or black can be supplied for the stators.

### Port fittings

A range of hygienic fittings are available, including polished widethroat feed hoppers. Inlet and outlet fittings are threaded as standard to DIN 11851, with alternatives on request.



---

#### **Gentle pumping action**

Minimises shear and crush damage to the pumped product, whilst maintaining a steady flow when handling viscous products.

---

#### **Wear characteristics**

The interference fit and therefore seal between the rotor and resilient stator, gives reduced slip and improved wear life than a fixed clearance between metal parts. Consequently, less reduction in flow even with low viscosity liquids such as CIP fluids.

---

#### **Sealed joints**

Fully sealed drive train to maximise life and minimise downtime.

---

#### **Handles gas entrapment**

No air locking or gas locking in the pump. The positive seal formed by the interference fit between rotor and stator enables the pump to self prime.

---

#### **Seals**

Mechanical seal as standard, other sealing options available on request.

---

#### **Baseplates**

Pumps can be supplied on a baseplate or trolley mounted to suit the application.

---

#### **C.I.P. cleaning**

Complete clean in place (CIP) procedures and by-pass ports are available to allow the system to be cleaned via a dedicated CIP or SIP (steam in place) system. No need to remove or disassemble the pump to clean.

---

#### **Low running speeds**

Reduced wear for a longer working pump life which extends the periods between routine maintenance. Think of the savings you could make on abrasive applications.

---

#### **Maintenance**

The pump can also be dismantled without removing the drive, which makes inspection and maintenance easier and reduces the risk of damage to the mechanical seal, whilst working on the pump.

---

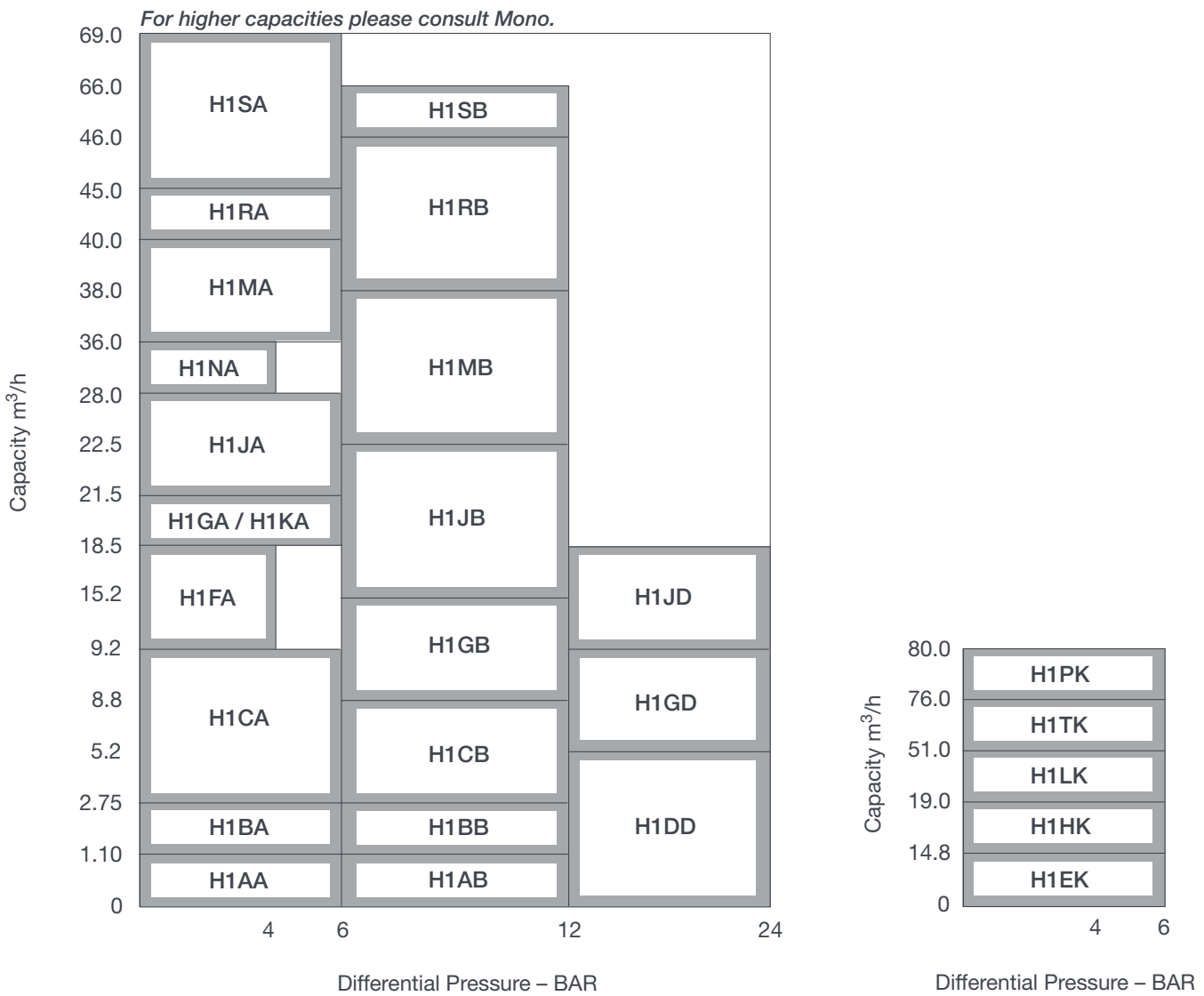
#### **Robust drives**

Specially selected drives and gearboxes for longer life. Options include electric motor drive units, supplied as overhead vee belt driven, direct-coupled or variable speed drives, with mechanical variable speed or frequency inverter.



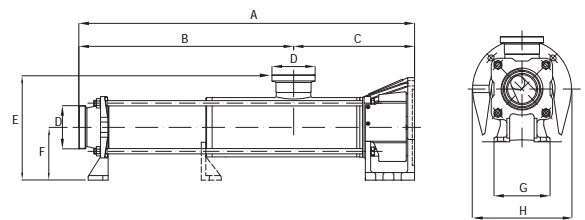
Transfer of honey

## Performance Data

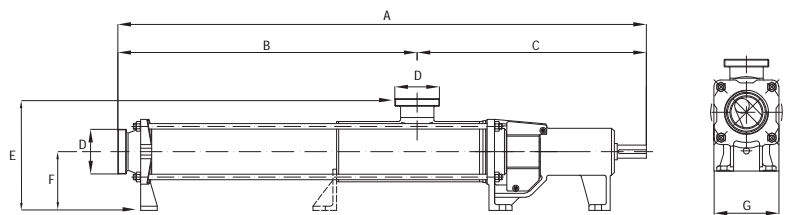


# Product Dimensions

MODEL	A	B	C	D	E	F	G	H
H1AA	351	236	115	25	•	•	-	105
H1AB	431	316	115	25	•	•	-	105
H1BA	475	344	131	40	•	•	42	160
H1BB	575	444	131	40	•	•	42	160
H1CA	650	452	198	50	186	100	68	200
H1CB	800	602	198	50	186	100	68	200
H1DD	1105	907	198	50	186	100	68	200
H1EK	817	619	198	50	186	100	68	200
H1FA	702	438	264	65	238	125	88	250
H1GA	702	438	264	65	238	125	88	250
H1GB	902	638	264	65	238	125	88	250
H1GD	1312	1048	264	65	238	125	88	250
H1HK	902	638	264	65	238	125	88	250
H1JA	762.5	536	226.5	80	259.5	140	100	250
H1JB	1019	786	233	80	272	140	100	250
H1KA	762.5	536	226.5	80	259.5	140	100	250
H1LK	1089	856	233	80	272	140	100	250
H1MA	1019	651	368	100	318	160	185	300
H1MB	1325	957	368	100	318	160	185	300
H1NA	1019	651	368	100	318	160	185	300
H1PK	1369	1001	368	100	318	160	185	300
H1RA	1059	691	368	100	318	160	185	300
H1RB	1409	1041	368	100	318	160	185	300
H1SA	1251	814	437	100	354	180	215	300
H1SB	1651	1214	437	100	354	180	215	300
H1TK	1565	1128	437	100	354	180	215	300



MODEL	A	B	C	D	E	F	G
H1BA	623	344	279	40	169	90	82
H1BB	723	444	279	40	169	90	82
H1CA	819	452	367	50	186	100	110
H1CB	966	599	367	50	186	100	110
H1DD	1274	907	367	50	186	100	110
H1EK	982	615	367	50	186	100	110
H1FA	926	438	488	65	238	125	138
H1GA	926	438	488	65	238	125	138
H1GB	1126	638	488	65	238	125	138
H1GD	1536	1048	488	65	238	125	138
H1HK	1126	638	488	65	238	125	138
H1JA	1022	536	486	80	260	140	155
H1JB	1279	786	493	80	272	140	155
H1JD	1801	1308	493	80	272	140	155
H1KA	1022	536	486	80	260	140	155
H1LK	1349	856	493	80	272	140	155
H1MA	1322	651	671	100	318	160	185
H1MB	1628	957	671	100	318	160	185
H1NA	1322	651	671	100	318	160	185
H1PK	1672	1001	671	100	318	160	185
H1RA	1362	691	671	100	318	160	185
H1RB	1712	1041	671	100	318	160	185
H1SA	1619	814	805	100	354	180	215
H1SB	2019	1214	805	100	354	180	215
H1TK	1933	1128	805	100	354	180	215



### Europe

Mono Pumps Ltd, Martin Street, Audenshaw  
Manchester, M34 5JA, England  
T. +44 (0)161 339 9000  
E. [info@mono-pumps.com](mailto:info@mono-pumps.com)

D.M.I EST, 56, rue du Pont  
88300 Rebeuville, France  
T. +33 (0)3 29 94 26 88  
E. [dmi-est@dmi-est.fr](mailto:dmi-est@dmi-est.fr)

### Americas

Monoflo Inc., 10529 Fisher Road  
Houston, Texas 77041, USA  
T. +1 713 980 8400  
E. [inquire@monoflo.com](mailto:inquire@monoflo.com)

Monoflo S.A., Florida 716 2nd Floor "A"  
1005 Buenos Aires, Argentina  
T. +54 11 4322 9545  
E. [moineaus@satlink.com.ar](mailto:moineaus@satlink.com.ar)

### Australasia

Mono Pumps (Australia) Pty Ltd  
Mono House, 338-348 Lower Dandenong Road  
Mordialloc, Victoria 3195, Australia  
T. 1800 333 138  
E. [ozsales@mono-pumps.com](mailto:ozsales@mono-pumps.com)

Mono Pumps (New Zealand) Ltd  
PO Box 71-021, Fremlin Place, Avondale  
Auckland 7, New Zealand  
T. +64 (0)9 829 0333  
E. [info@mono-pumps.co.nz](mailto:info@mono-pumps.co.nz)

### Asia

Mono Pumps Ltd, No. 500 YaGang Road  
Lujia Village, Malu, Jiading District  
Shanghai 201801, P.R. China  
T. +86 (0)21 5915 7168  
E. [monoshanghai@nov.com](mailto:monoshanghai@nov.com)

[www.mono-pumps.com](http://www.mono-pumps.com)



Published information other than that marked CERTIFIED does not extend any warranty or representation, expressed or implied, regarding these products. Any such warranties or other terms and conditions of sales and products shall be in accordance with Mono Pumps Limited standard terms and conditions of sale, available on request.

© Mono Pumps Limited August 2007 Literature reference: MPSB/02/01/R1

Mono® is a registered trademark of Mono Pumps Ltd.  
Registered in England No 300721

**Mono**® 

One Company, Unlimited Solutions