

UC

CENTRIFUGAL PUMP

FORM NO.: UC453145UK REVISION: 04/2015

READ AND UNDERSTAND THIS MANUAL PRIOR TO OPERATING OR SERVICING THIS PRODUCT.

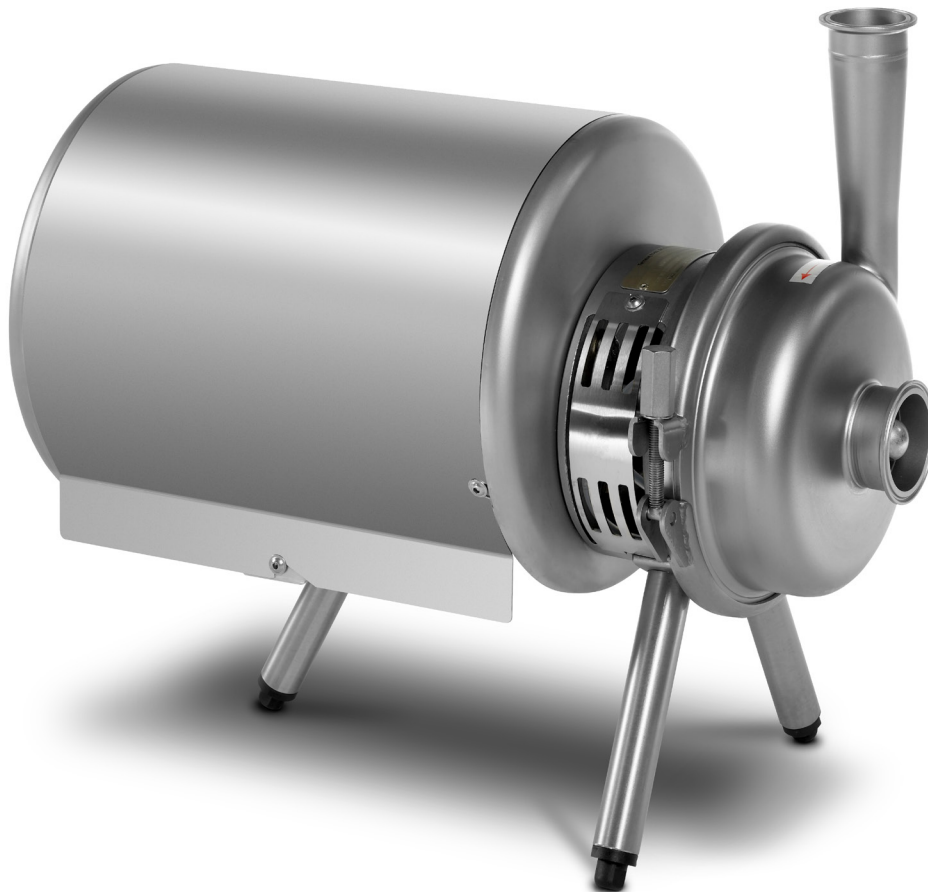
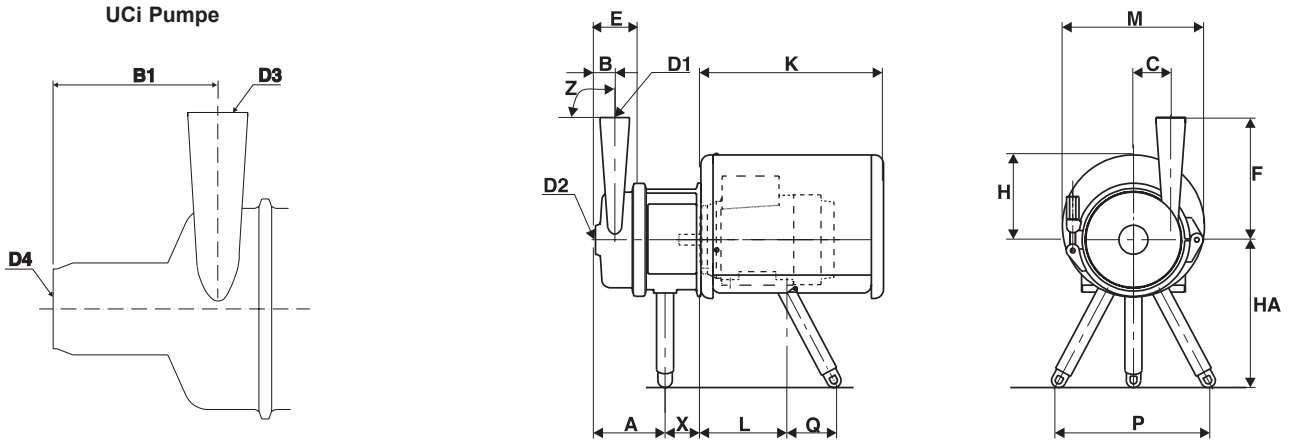


Table of contents		Page	UC
1.	Pump dimensions	1	
1.1	Adjustable Feet	2	
1.2	Bracket type A	3	
1.3	Bracket type B	4	
1.4	UC/600/420 Adjustable feet	5	
1.5	UC/600/420 Bracket type A	6	
2.	Pump complete	7	
3.	Impeller	9	
4.	Shaft seal	11	
4.1	Fixing Kit	11	
4.2	Face Kit	12	
5.	Complete seal kit	13	
5.1	Complete seal kit, single	13	
5.2	Complete seal kit, double	14	
6.	O-rings kit	15	
7.	Shaft	16	
8.	Extension frame and shaft guard	17	
9.	Adjustable Feet	19	
9.1	Motor Type 80-132	19	
9.2	Motor Type 160-200	20	
9.3	Motor Type 225-250	21	
9.4	Motor Type 180-315 (UC/600/420)	22	
10.	Bracket Type A	23	
10.1	Motor Type 80-180	23	
10.2	Motor Type 180-315	23	
11.	Bracket Type B	24	
12.	Shroud	25	

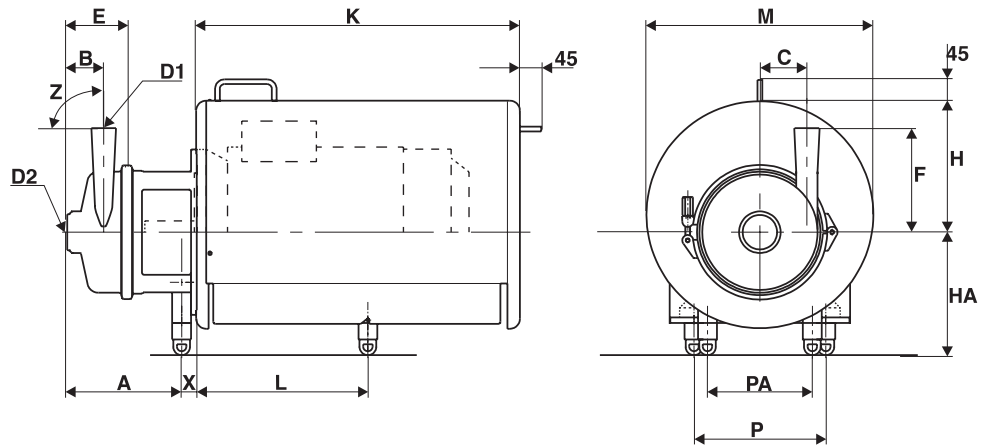
1. Pump dimensions

1.1 Adjustable Feet

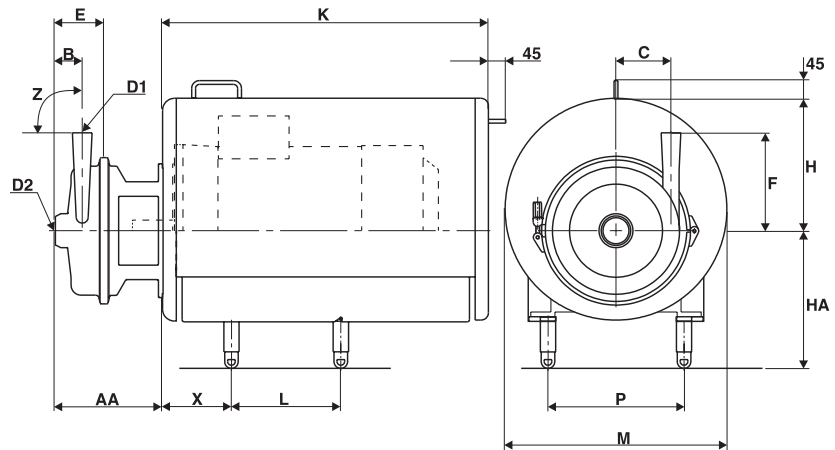
TG. 1 Motor 80-132



TG. 2 Motor 160-200



TG. 3 Motor 225-250



Tolerances:	B: $+0$ -5 mm	F: $+5$ -0 mm	D ₁ , D ₂ : Nominal	Z: $90^\circ \pm 1.5^\circ$	K: ± 5 mm	Others: ± 2 mm
-------------	--------------------	--------------------	---	-----------------------------	---------------	--------------------

1. Pump dimensions

UC

1.1 Adjustable Feet

		UC Pump type														
TG		008/110	020/140	080/170	210/290	035/175	055/180	120/175	008/200	035/210	060/220	110/230	350/260	040/240	080/255	130/290
1	A	138	123	181		121	145	207	137	174	182	180	182	151	176	183
2				238	232	180	202	253		220	228	221	236	227	237	244
3	AA				278							268	283		288	289
	B	32	34	80	86	45	53	88	38	73	77	68	95	55,5	70	82
	*B1		*116	*161	*249	*123	*148	*212		*134	*150	*195	*254	*123	*138	*192
	C	45	66	70	137	83	80	95	108	108	100	106	107	129	144	157
	E	58	72	141	168	82	105	148	82	115	123	120	155	101	127	145
	F	85	215	215	237	230	210	250	150	195	220	290	270	225	256	230
	D1	25	51	76	DN100	51	63,5	76	25	38	51	76	DN100	38	51	76
	D2	38	51	101,6	DN150	63,5	76	101,6	38	63,5	76	101,6	DN150	63,5	76	101,6
	*D3		*51	*76	*100	*51	*63,5	*76		*38	*51	*76	*100	*38	*51	*76
	*D4		*76,1	*101,6	DN150	*76,1	*101,6	*101,6		*76,1	*101,6	*101,6	DN150	*76,1	*101,6	*101,6
1	X	15	62	56		56	56	39	39	39	39	35	50	67	51	50
2				46	46	46	46			46	46	46	46	46	46	46
3					179							179	179		179	179
225																
250													168		168	168
80-132M	1	160	260	260		260	260	260	260	260	260	260	260	260	260	260
160	HA				260									260		
180																
200					305				305		305		305	305	305	305
225		3														
250	3												350		350	350

* UCi Pumpe

	Motor															
	TG. 1							TG. 2					TG. 3			
	80	90S	90L	100L	112M	132S	132M	160M	160L	180M	180L	200L	225S	225M	250M	
K	321	321	321	394	482	482	482	588	588	688	688	848	921	921	921	
M	250	250	250	305	360	360	360	450	450	480	480	580	700	700	700	
P	*276	276	276	276	276	276	276	254	254	279	279	318	356	356	406	
P(UC/130/290)				325	325	325	325									
PA								222	222	222	222	222				
Q	*89	84	84	79	72	62	62									
H	148	148	148	181,5	212	193	193	255	255	277	277	372	405	405	380	
L																
UC/008/110	154															
UC/020/140	150															
UC/080/170		156	181	203	210	252	290									
UC/210/290																
UC/035/175								318	362			362	400	463	286	311
UC/055/180																
UC/120/175																
UC/008/200		156	181	203												
UC/035/210																
UC/060/220					210	252	290									
UC/110/230																
UC/350/260								318	362	362	400	463		286	311	349
UC/040/240																
UC/080/255		156	181	203												
UC/130/290														286	311	349

* UC/008/110 P=146, Q=131

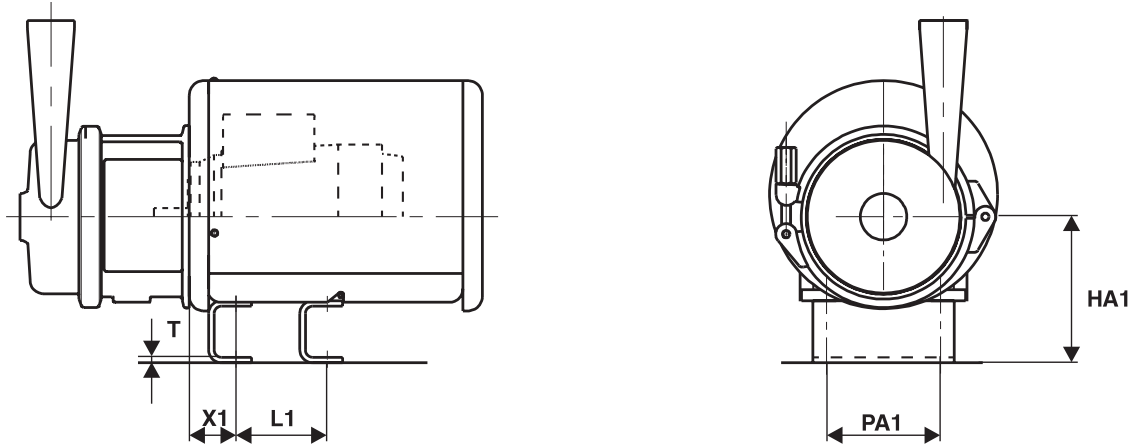
Tolerances:	B: $\begin{matrix} +0 \\ -5 \end{matrix}$ mm	F: $\begin{matrix} +5 \\ -0 \end{matrix}$ mm	D ₁ , D ₂ : Nominal	Z: 90° ± 1.5°	K: ± 5 mm	Others: ± 2 mm
-------------	--	--	---	---------------	-----------	----------------

1. Pump dimensions

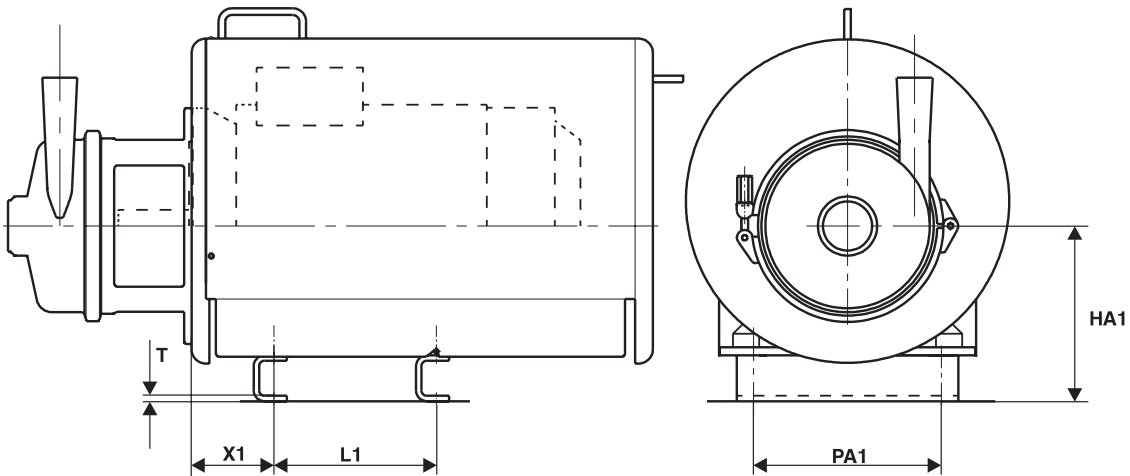
UC

1.2 Bracket type A

Motor 80 - 132M



Motor 160M - 250M



	Motor														
	80	90S	90L	100L	112M	132S	132M	160M	160L	180M	180L	200L	225S	225M	250M
X1	50	56	56	63	70	112	112	108	108	121	121	158	179	179	168
L1	100	100	125	140	140	140	178	210	254	241	279	305	286	311	349
PA1	125	140	140	160	190	216	216	254	254	279	279	318	356	356	406
T	6	6	6	6	6	6	6	6	6	6	6	8	8	8	8
HA1	160	170	170	180	192	212	212	240	240	260	260	280	305	305	330

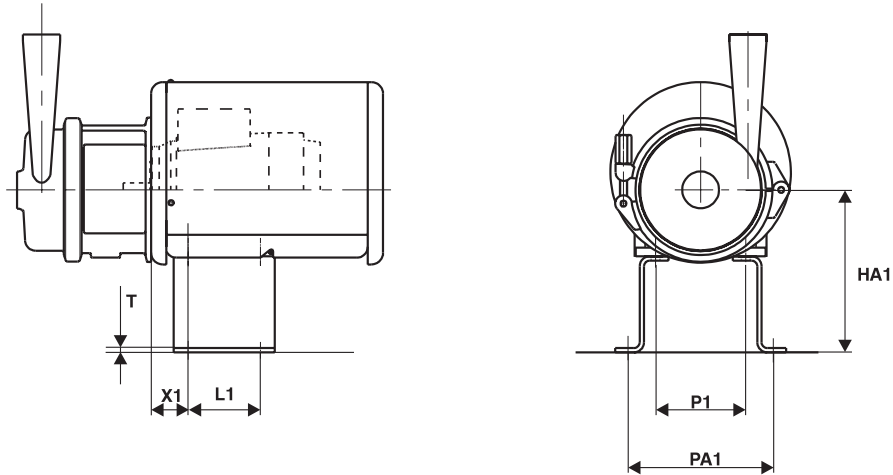
Tolerances:	B: $\begin{matrix} +0 \\ -5 \end{matrix}$ mm	F: $\begin{matrix} +5 \\ -0 \end{matrix}$ mm	D ₁ , D ₂ : Nominal	Z: 90° ± 1.5°	K: ± 5 mm	Others: ± 2 mm
-------------	--	--	---	---------------	-----------	----------------

1. Pump dimensions

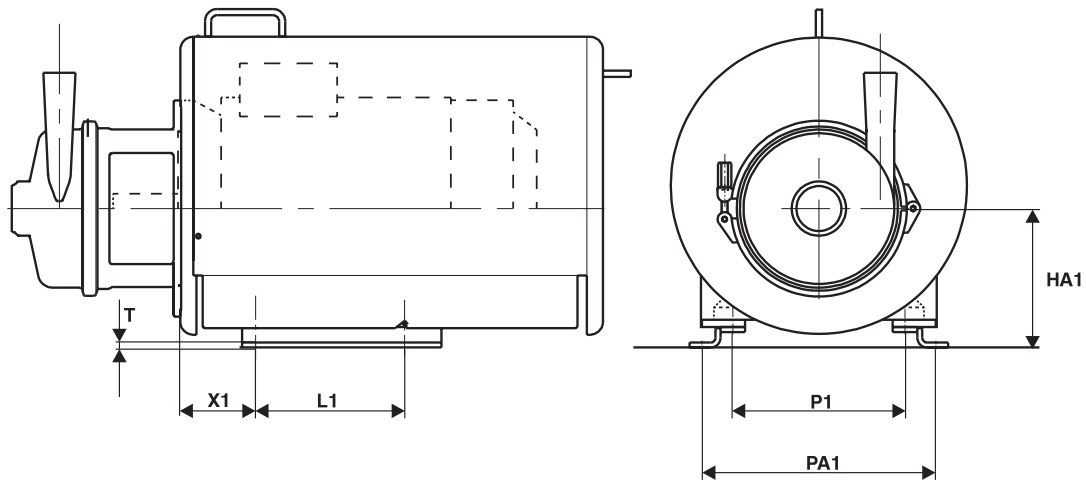
UC

1.3 Bracket type B

Motor 80 - 132M



Motor 160M - 200L



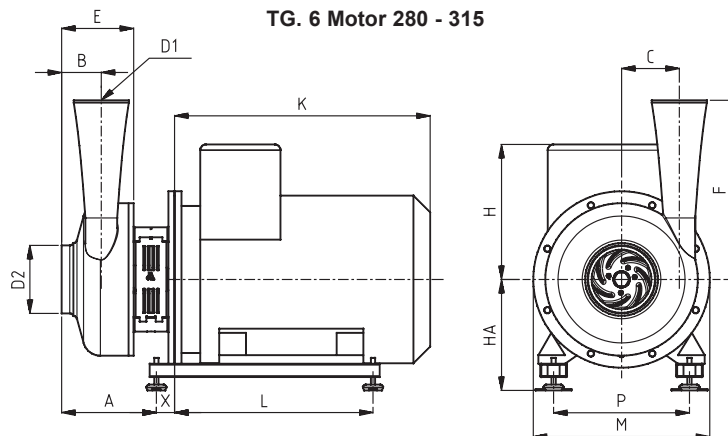
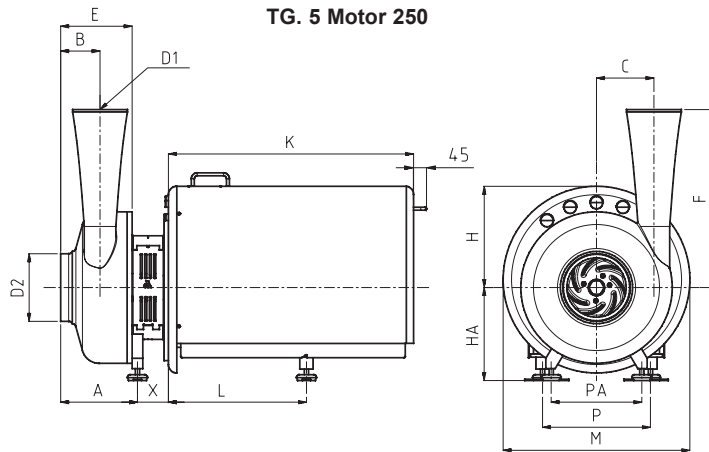
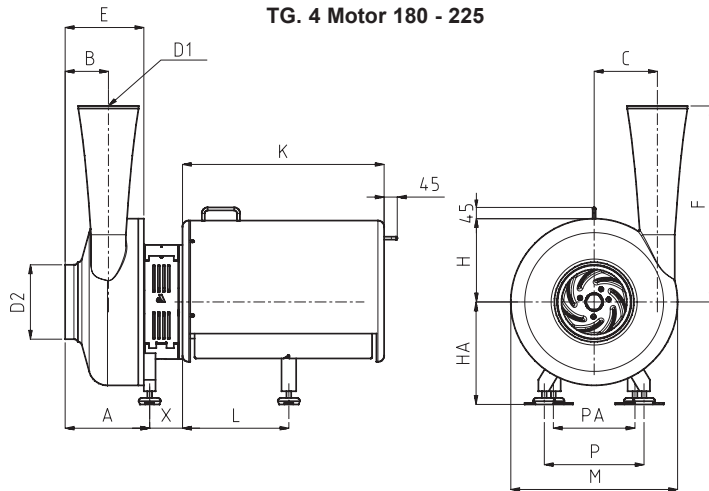
	Motor											
	80	90S	90L	100L	112M	132S	132M	160M	160L	180M	180L	200L
X1	50	56	56	63	70	112	112	108	108	121	121	158
L1	100	125	125	140	140	178	178	254	254	279	279	305
P1	125	140	140	160	190	216	216	254	254	279	279	318
PA1	201	216	216	236	266	292	292	358	358	379	379	432
T	6	6	6	6	6	6	6	6	6	6	6	10
HA1	225	225	225	225	225	225	225	225	225	225	225	225

Tolerances: B: $\begin{matrix} +0 \\ -5 \end{matrix}$ mm F: $\begin{matrix} +5 \\ -0 \end{matrix}$ mm D_1, D_2 : Nominal Z: $90^\circ \pm 1.5^\circ$ K: ± 5 mm Others: ± 2 mm

1. Pump dimensions (UC/600/420)

UC

1.4 UC/600/420 Adjustable feet



UC/600/420						
Motor						
	TG. 4			TG. 5	TG. 6	
	180	200	225	250	280	315
A	289			289	313	354
B	148					
C	216					
D1	ø206					
D2	ø254,4					
E	269					
F	670					
H	277	372	347	381	376	505
HA	350			350	375	415
K	690	848	923	923	760	955
L	364	465	492	519	717	743
M	ø570	ø580	ø702,8	ø702,8	ø570	ø660
P	279	318	356	406	457	508
PA	311			311	-	-
X	112			117	93	67

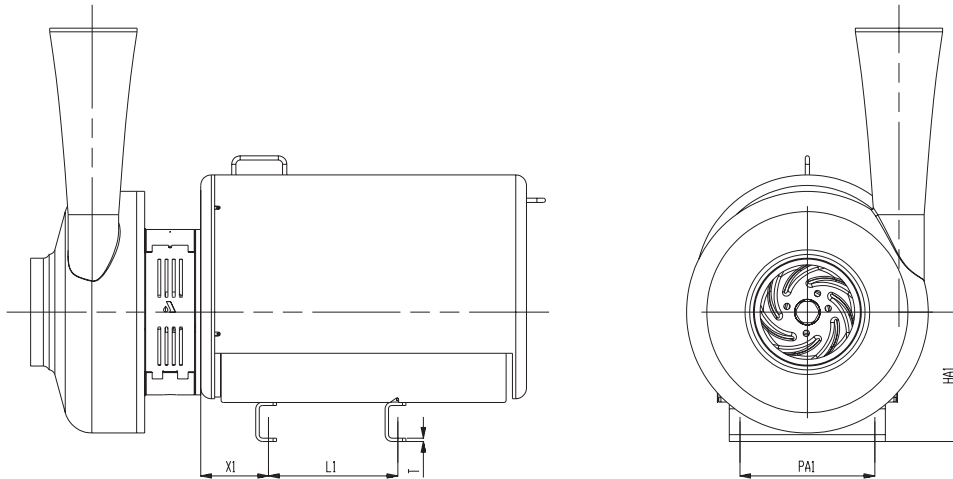
Tolerances: B: $\begin{matrix} +0 \\ -5 \end{matrix}$ mm F: $\begin{matrix} +5 \\ -0 \end{matrix}$ mm D₁, D₂: Nominal Z: 90° ± 1.5° K: ± 5 mm Others: ± 2 mm

1. Pump dimensions (UC/600/420)

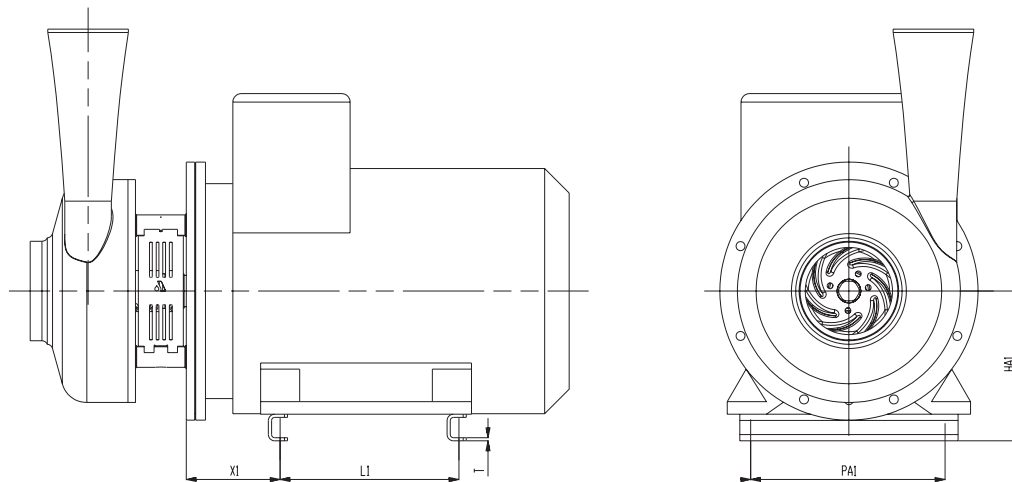
UC

1.5 UC/600/420 Bracket type A

Motor 180M - 250M



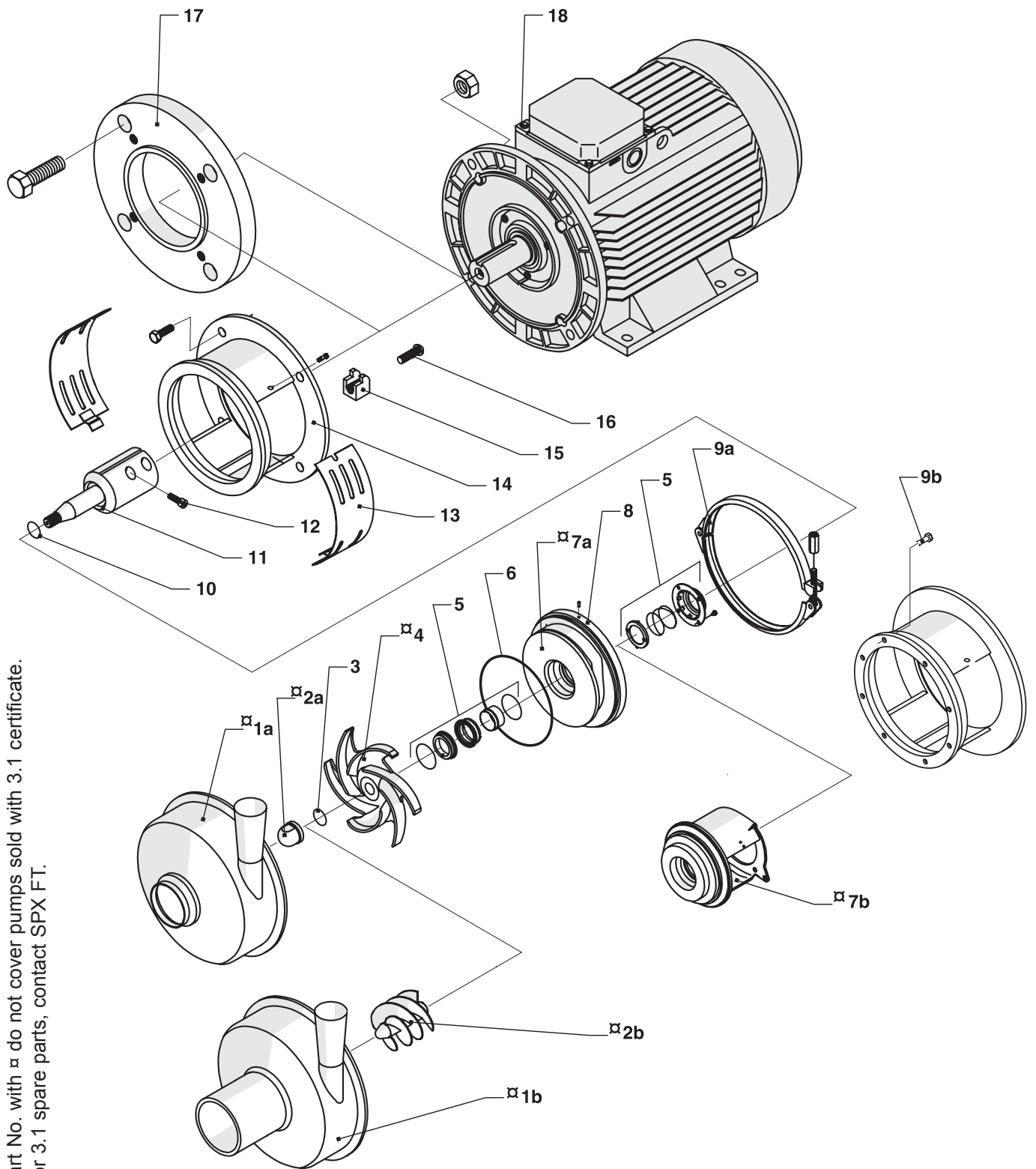
Motor 280 - 315



UC/600/420						
Motor						
	180M	200L	225M	250M	280	315
X1	122	160	181	169	192	218
L1	241	305	311	349	419	457
PA1	279	318	356	406	457	508
T	8	8	8	8	8	8
HA1	305	305	305	330	360	395

Tolerances: B: $\begin{matrix} +0 \\ -5 \end{matrix}$ mm F: $\begin{matrix} +5 \\ -0 \end{matrix}$ mm D_1, D_2 : Nominal Z: $90^\circ \pm 1.5^\circ$ K: ± 5 mm Others: ± 2 mm

2. Pump complete



Part No. with α do not cover pumps sold with 3.1 certificate.
For 3.1 spare parts, contact SPX FT.

2. Pump complete

UC

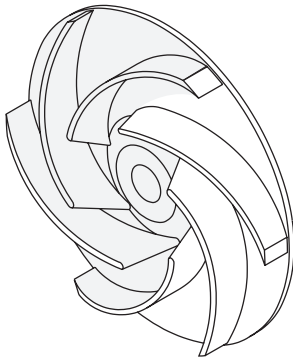
Pos	Qty	Description	UC Pump type							
			008/110	020/140	080/170	210/290	035/175	055/180	120/175	600/420
			Part No.							
1a	1	Pump housing	UC188710	UC168838	UC182702	UC168696	UC182645	UC182703	UC182704	UC261056
1b	1	Inducer housing	----	UC183127	UC182709	UC182771	UC188515	UC182710	UC188518	----
2a	1	Cap nut	UC274351	UC260058	UC260058	UC260059	UC260058	UC260058	UC260059	UC279935
2b	1	Inducer	----	UC261540	UC277270	UC188701	UC261540	UC277270	UC277272	----
3	1	O-ring	s/p15	s/p15	s/p15	s/p15	s/p15	s/p15	s/p15	s/p15
4	1	Impeller	s/p9-10	s/p9-10	s/p9-10	s/p9-10	s/p9-10	s/p9-10	s/p9-10	s/p9-10
5	1	Shaft seal	s/p11-12	s/p11-12	s/p11-12	s/p11-12	s/p11-12	s/p11-12	s/p11-12	s/p11-12
6	1	O-ring	s/p15	s/p15	s/p15	s/p15	s/p15	s/p15	s/p15	s/p15
7a	1	Back plate	----	----	UC260934	UC260945	UC260935	UC260936	UC260937	UC261051
7b	1	Back plate	UC188735#	UC261566#	----	----	----	----	----	----
8	1	Pin	----	----	UC772493	----	UC772493	UC772493	UC772493	UC773799
9a	1	Clamp ring	UC169050	UC188430	UC188436	----	UC188436	UC188436	UC188432	----
9b	8	Screw M10/M16	----	----	----	UC756001	----	----	----	UC701533
10	1	O-ring	s/p15	s/p15	s/p15	s/p15	s/p15	s/p15	s/p15	s/p15
11	1	Shaft	s/p16	s/p16	s/p16	s/p16	s/p16	s/p16	s/p16	s/p16
12	2	Screw	s/p16	s/p16	s/p16	s/p16	s/p16	s/p16	s/p16	s/p16
13	2	Shaft guard	s/p17-18	s/p17-18	s/p17-18	s/p17-18	s/p17-18	s/p17-18	s/p17-18	s/p17-18
14	1	Extension frame	s/p17-18	s/p17-18	s/p17-18	s/p17-18	s/p17-18	s/p17-18	s/p17-18	s/p17-18
15	2	Bracket(Screw)	----	----	UC268499	UC701509	UC268499	UC268499	UC268499	----
16	2	Screw	----	----	UC701942	UC771199	UC701942	UC701942	UC701942	----
16	4	Screw	----	----	----	----	----	----	----	UC701686
17	1	Washer	----	s/p17	s/p17	s/p17	s/p17	s/p17	s/p17	s/p17
18	1	Motor	----	----	----	----	----	----	----	----
--	--	Frame	s/p19-24	s/p19-24	s/p19-24	s/p19-24	s/p19-24	s/p19-24	s/p19-24	s/p19-24
--	--	Shroud	s/p25	s/p25	s/p25	s/p25	s/p25	s/p25	s/p25	s/p25
			008/200	035/210	060/220	110/230	350/260	040/240	080/255	130/290
1a	1	Pump housing	UC168644	UC182646	UC182647	UC182705	UC253421	UC182706	UC168619	UC253420
1b	1	Inducer housing	----	UC188516	UC182711	UC188519	UC182772	UC188517	UC182712	UC183138
2a	1	Cap nut	UC274351	UC260058	UC260059	UC260059	UC260059	UC260059	UC260059	UC260059
2b	1	Inducer	----	UC261540	UC277271	UC277272	UC188701	UC261541	UC277271	UC277272
3	1	O-ring	s/p15	s/p15	s/p15	s/p15	s/p15	s/p15	s/p15	s/p15
4	1	Impeller	s/p9-10	s/p9-10	s/p9-10	s/p9-10	s/p9-10	s/p9-10	s/p9-10	s/p9-10
5	1	Shaft seal	s/p11-12	s/p11-12	s/p11-12	s/p11-12	s/p11-12	s/p11-12	s/p11-12	s/p11-12
6	1	O-ring	s/p15	s/p15	s/p15	s/p15	s/p15	s/p15	s/p15	s/p15
7a	1	Back plate	UC260920	UC260939	UC260940	UC260941	UC260946	UC260942	UC260943	UC260944
8	1	Pin	----	UC772493	UC772493	UC772493	----	UC772493	UC772493	----
9a	1	Clamp ring	UC188431	UC188432	UC188432	UC188433	----	UC188434	UC188435	----
9b	8	Screw M8/M10	----	----	----	----	UC700234	----	----	UC701669
10	1	O-ring	s/p15	s/p15	s/p15	s/p15	s/p15	s/p15	s/p15	s/p15
11	1	Shaft	s/p16	s/p16	s/p16	s/p16	s/p16	s/p16	s/p16	s/p16
12	2	Screw	s/p16	s/p16	s/p16	s/p16	s/p16	s/p16	s/p16	s/p16
13	2	Shaft guard	s/p17-18	s/p17-18	s/p17-18	s/p17-18	s/p17-18	s/p17-18	s/p17-18	s/p17-18
14	1	Extension frame	s/p17-18	s/p17-18	s/p17-18	s/p17-18	s/p17-18	s/p17-18	s/p17-18	s/p17-18
15	2	Bracket(Screw)	UC268499	UC268499	UC268499	UC268499	UC234177	UC268499	UC268499	----
16	2	Screw	UC701942	UC701942	UC701942	UC701942	UC700241	UC701942	UC701942	----
17	1	Washer	s/p17	s/p17	s/p17	s/p17	s/p17	s/p17	s/p17	s/p17
18	1	Motor	----	----	----	----	----	----	----	----
--	--	Frame	s/p19-24	s/p19-24	s/p19-24	s/p19-24	s/p19-24	s/p19-24	s/p19-24	s/p19-24
--	--	Shroud	s/p25	s/p25	s/p25	s/p25	s/p25	s/p25	s/p25	s/p25

s/pxx = see page

Integrated with extension frame item 14

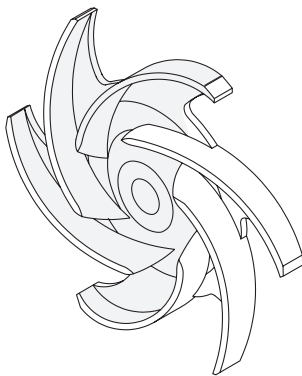
3. Impeller

UC



Impeller Ø	UC Pump type						
	020/140	080/170	035/175		055/180	008/200	
	Part No.						
Ø200						UC267328	
Ø195						UC273889	
Ø190						UC273890	
Ø185						UC273891	
Ø180					UC253740	UC273892	
Ø175				UC253739	UC267132*	UC267492	UC273893
Ø170			UC253738	UC267481	UC267133*	UC267493	UC273894
Ø165			UC267469	UC267482	UC267134*	UC267494	UC273895
Ø160			UC267470	UC267483	UC267135*	UC267495	UC273896
Ø155			UC267471	UC267484	UC267136*	UC267496	UC273897
Ø150			UC267472	UC267485	UC267137*	UC267497	UC273898
Ø145			UC267473	UC267486	UC267138*	UC267498	UC273899
Ø140**	UC253737	UC182756*	UC267474	UC267487	UC267139*	UC267499	UC273900
Ø135	UC267460	UC182757*	UC267475	UC267488	UC267140*	UC267500	
Ø130	UC267461	UC182758*	UC267476	UC267489	UC267141*	UC267501	
Ø125	UC267462	UC182759*	UC267477	UC267490	UC267142*	UC267502	
Ø120	UC267463	UC182760*	UC267478	UC267491	UC267143*	UC267503	
Ø115	UC267464	UC182761*	UC267479				
Ø110	UC267465	UC182762*	UC267480				
Ø105	UC267466	UC182763*					
Ø100	UC267467	UC182764*					
Ø95	UC267468	UC182765*					

* Low Flow Impeller
 ** Ø142 UC/020/140



Impeller Ø	UC Pump type	
	600/420	
	Part No.	
Ø420	UC277320	
Ø410	UC280041	
Ø400	UC280040	
Ø390	UC280039	
Ø380	UC280038	
Ø370	UC280037	
Ø360	UC280036	
Ø350	UC280035	
Ø340	UC280034	
Ø330	UC280033	
Ø320	UC280032	
Ø310	UC280031	
Ø300	UC280030	
Ø290	UC280029	
Ø280	UC280028	

Part No. page 38 and 39 do not cover pumps sold with 3.1 certificate.
 For 3.1 spare parts, contact SPX FT.

3. Impeller

UC



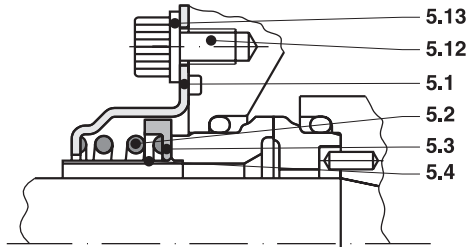
Impeller Ø	UC Pump type									
	008/110	120/175	035/210	060/220	110/230	040/240	080/255	130/290	210/290	350/260
	Part No.									
Ø290								UC253748	UC253749	
Ø285								UC267680	UC267700	
Ø280								UC267681	UC267701	
Ø275								UC267682	UC267702	
Ø270								UC267683	UC267703	
Ø265								UC267684	UC267704	
Ø260								UC267685	UC267705	UC253750
Ø255							UC253747	UC267686	UC267706	UC267716
Ø250							UC267559	UC267687	UC267707	UC267717
Ø245							UC267560	UC267688	UC267708	UC267718
Ø240						UC253746	UC267561	UC267689	UC267709	UC267719
Ø235						UC267549	UC267562	UC267690	UC267710	UC267720
Ø230					UC253745	UC267550	UC267563	UC267691	UC267711	UC267721
Ø225					UC267535	UC267551	UC267564	UC267692	UC267712	UC267722
Ø220				UC253744	UC267536	UC267552	UC267565	UC267693	UC267713	UC267723
Ø215				UC267523	UC267537	UC267553	UC267566	UC267694	UC267714	UC267724
Ø210			UC253743	UC267524	UC267538	UC267554	UC267567	UC267695	UC267715	UC267725
Ø205			UC267512	UC267525	UC267539	UC267555	UC267568	UC267696		UC267726
Ø200			UC267513	UC267526	UC267540	UC267556	UC267569	UC267697		UC267727
Ø195			UC267514	UC267527	UC267541	UC267557	UC267570			UC267728
Ø190			UC267515	UC267528	UC267542	UC267558				UC267729
Ø185			UC267516	UC267529	UC267543					
Ø180			UC267517	UC267530	UC267544					
Ø175		UC253741	UC267518	UC267531	UC267545					
Ø170		UC267504	UC267519	UC267532	UC267546					
Ø165		UC267505	UC267520	UC267533	UC267547					
Ø160		UC267506	UC267521	UC267534	UC267548					
Ø155		UC267507	UC267522							
Ø150		UC267508								
Ø145		UC267509								
Ø140		UC267510								
Ø135		UC267511								
Ø110	UC267324									
Ø105	UC273885									
Ø100	UC273886									
Ø95	UC273887									
Ø90	UC273888									

4. Shaft seal

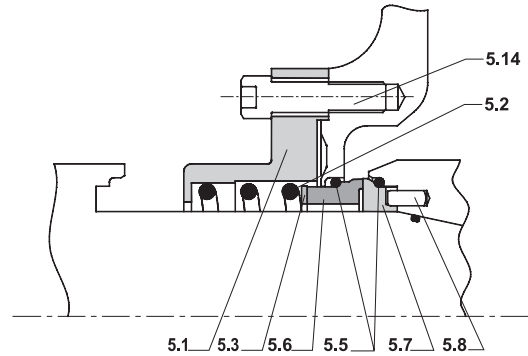
UC

4.1 Fixing Kit

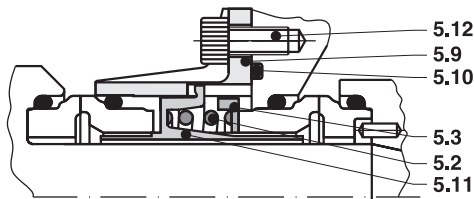
A. Single Seal Ø25+Ø35



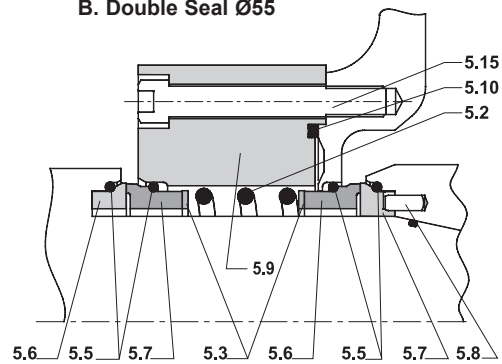
A. Single Seal Ø55



B. Double Seal Ø25+Ø35



B. Double Seal Ø55



Fixing kit					Shaft size		
					Ø25	Ø35	Ø55
Seal type	Item	Description	Material	Part no.			
A	Single Seal	5.1	Complete	AISI 316 AISI 316 AISI 316 PTFE	UC772460	UC772465	UC808652
		Seal housing					
		5.2	Spring				
		5.3	Pressure ring		(UC773100)	(UC773101)	----
		5.4	Drain pipe				
B	Double seal	5.2	Complete	AISI 316 AISI 316 AISI 316 AISI 316 -	UC194448	UC194449	UC808653
		Spring					
		5.3	Pressure ring				2x Item 5.3
		5.9	Seal housing				
		5.11	Pressure ring				
		5.11	Union elbow			----	

5.10	O-ring	EPDM	UC772470	UC771362	UC25056404
5.12	4 Screws M6x10	AISI 316	UC770496	UC770496	----
5.13*	4 Washers M6	AISI 316	UC701477	----	----
5.14	4 Screws M8x30	AISI 316	----	----	UC771857
5.15	4 Screws M8x50	AISI 316	----	----	UC774194

* Only used for UC/008/200

Rebuild from single to double seal: 1x Fixing kit double + 1x Face kit (see page 41) + 1x Item 5.10

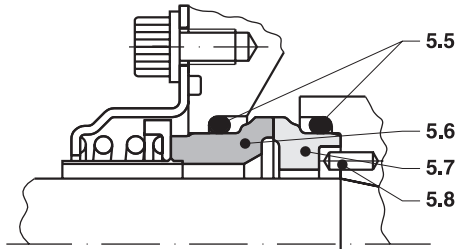
Rebuild from double to single seal: 1x Fixing kit single + 1x Item 5.13

4. Shaft seal

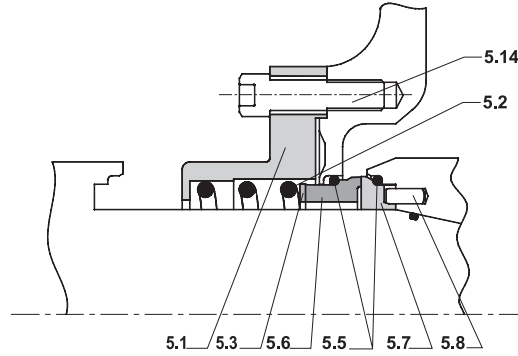
UC

4.2 Face Kit

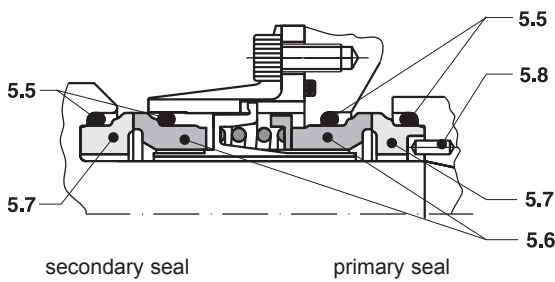
A. Single Seal Ø25+Ø35



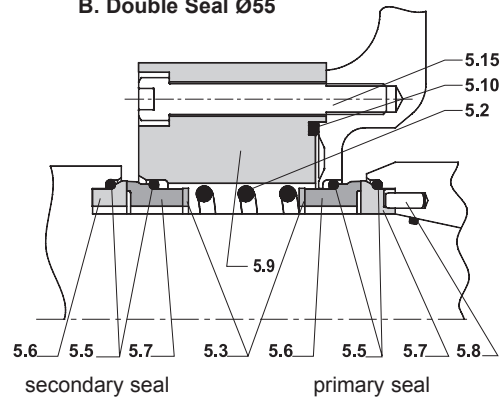
A. Single Seal Ø55



B. Double Seal Ø25+Ø35



B. Double Seal Ø55



Face kit	Item material				Shaft size		
	5.5 O-rings x2	5.6 Stationary seal	5.7 Rotary seal	5.8 Pin	Ø25	Ø35	Ø55
Reaction Bonded SiC/Car EPDM	EPDM	Reaction Bonded SiC	Resin Bonded Carbon	AISI 316L	UC772461	UC772466	UC808648
Reaction Bonded SiC/Car FPM	FPM	Reaction Bonded SiC	Resin Bonded Carbon	AISI 316L	UC772462	UC772467	UC808649
Reaction Bonded SiC/SiC EPDM	EPDM	Reaction Bonded SiC	Reaction Bonded SiC	AISI 316L	UC772463	UC772468	UC808650
Reaction Bonded SiC/SiC FPM	FPM	Reaction Bonded SiC	Reaction Bonded SiC	AISI 316L	UC772464	UC772469	UC808651
Self Sintered SiC/Car EPDM	EPDM	Self Sintered SiC	Resin Bonded Carbon	AISI 316L	UC782461	UC782466	*
Self Sintered SiC/Car FPM	FPM	Self Sintered SiC	Resin Bonded Carbon	AISI 316L	UC782462	UC782467	*
Self Sintered SiC/SiC EPDM	EPDM	Self Sintered SiC	Self Sintered SiC	AISI 316L	UC782463	UC782468	*
Self Sintered SiC/SiC FPM	FPM	Self Sintered SiC	Self Sintered SiC	AISI 316L	UC782464	UC782469	*
Knife Edge SiC/SiC FPM	FPM	Reaction Bonded SiC	Reaction Bonded SiC	AISI 316L	UC789464	UC789469	*

* Please contact SPX FT

Seal type B: All combinations of materials are available - SPX FT recommends to use SiC/Car as secondary seal

All seal rings marked as below:

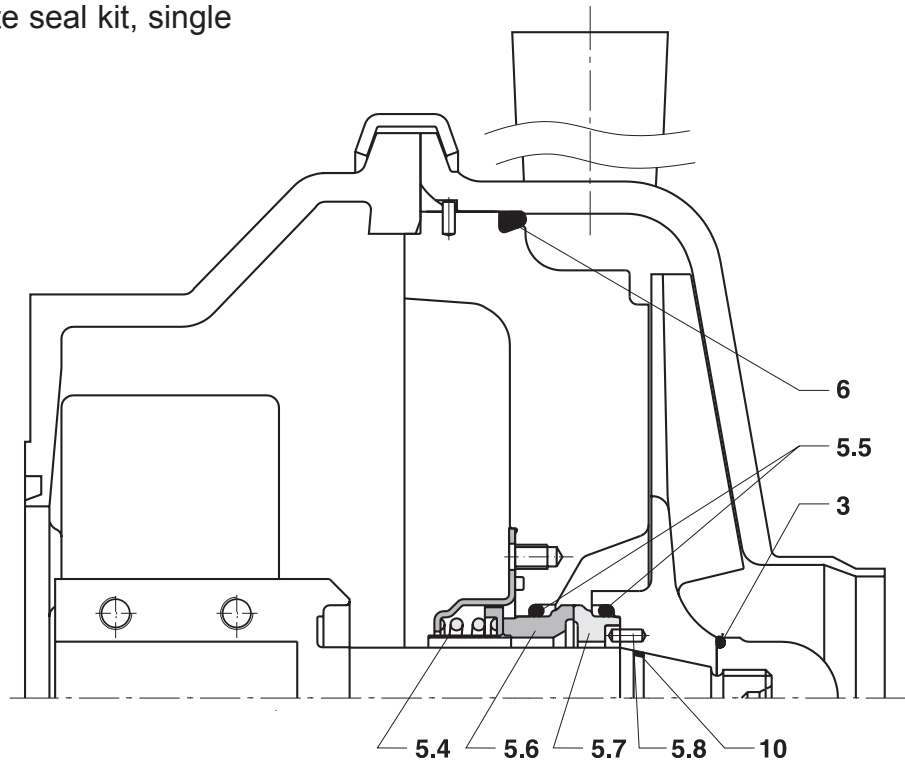
SSwwyyx - SS (Self Sintered SiC) - ww (week of production) - yy (year of production) - x (batch)

RBwwyyx - RB (Reaction Bonded SiC) - ww (week of production) - yy (year of production) - x (batch)

5. Complete seal kit

UC

5.1 Complete seal kit, single



Reaction Bonded SiC		UC Pump type							
Item	Material	008/110	020/140	080/170	210/290	035/175	055/180	120/175	600/420
		Part No.							
3, 6, 10, 5.4, 2x 5.5, 5.6, 5.7, 5.8	SiC/SiC EPDM	UC800875	UC800800	UC800801	UC800802	UC800801	UC800801	UC800807	UC808641
	SiC/Car EPDM	UC800877	UC800915	UC800916	UC800917	UC800916	UC800916	UC800922	UC808640
	SiC/SiC FPM	UC800871	UC800813	UC800814	UC800815	UC800814	UC800814	UC800820	UC808643
	SiC/Car FPM	UC800873	UC800928	UC800929	UC800930	UC800929	UC800929	UC800935	UC808642
		008/200	035/210	060/220	110/230	350/260	040/240	080/255	130/290
3, 6, 10, 5.4, 2x 5.5, 5.6, 5.7, 5.8	SiC/SiC EPDM	UC800876	UC800806	UC800807	UC800808	UC800809	UC800810	UC800811	UC800812
	SiC/Car EPDM	UC800878	UC800921	UC800922	UC800923	UC800924	UC800925	UC800926	UC800927
	SiC/SiC FPM	UC800872	UC800819	UC800820	UC800821	UC800822	UC800823	UC800824	UC800825
	SiC/Car FPM	UC800874	UC800934	UC800935	UC800936	UC800937	UC800938	UC800939	UC800940

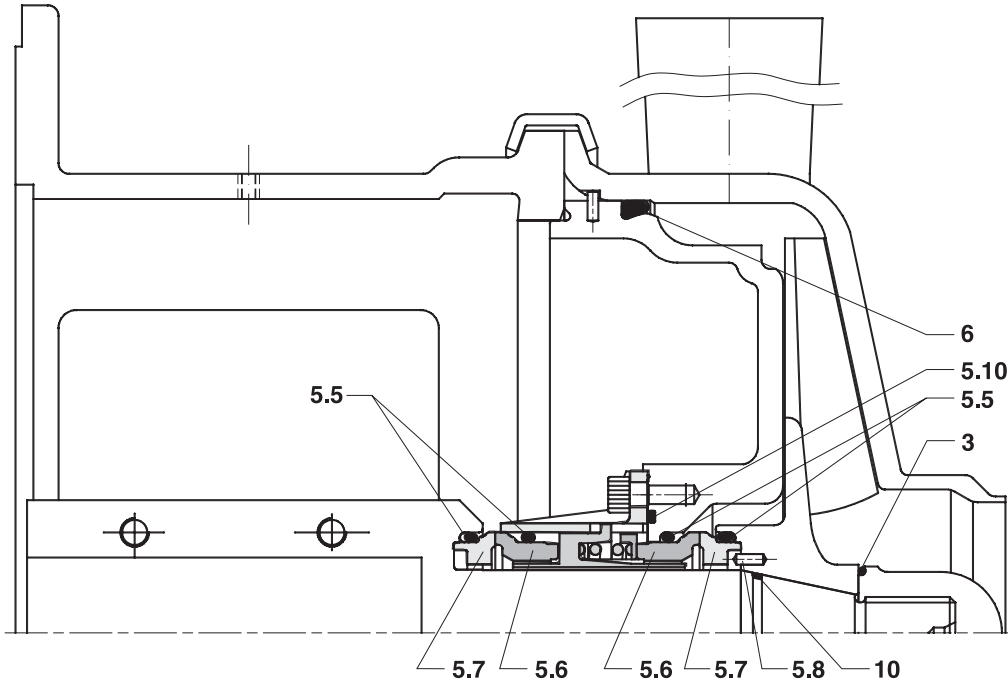
Self Sintered SiC		UC Pump type							
Item	Material	008/110	020/140	080/170	210/290	035/175	055/180	120/175	600/420
		Part No.							
3, 6, 10, 5.4, 2x 5.5, 5.6, 5.7, 5.8	SiC/SiC EPDM	UC880875	UC880800	UC880801	UC880802	UC880801	UC880801	UC880807	*
	SiC/Car EPDM	UC880877	UC880915	UC880916	UC880917	UC880916	UC880916	UC880922	*
	SiC/SiC FPM	UC880871	UC880813	UC880814	UC880815	UC880814	UC880814	UC880820	*
	SiC/Car FPM	UC880873	UC880928	UC880929	UC880930	UC880929	UC880929	UC880935	*
		008/200	035/210	060/220	110/230	350/260	040/240	080/255	130/290
3, 6, 10, 5.4, 2x 5.5, 5.6, 5.7, 5.8	SiC/SiC EPDM	UC880876	UC880806	UC880807	UC880808	UC880809	UC880810	UC880811	UC880812
	SiC/Car EPDM	UC880878	UC880921	UC880922	UC880923	UC880924	UC880925	UC880926	UC880927
	SiC/SiC FPM	UC880872	UC880819	UC880820	UC880821	UC880822	UC880823	UC880824	UC880825
	SiC/Car FPM	UC880874	UC880934	UC880935	UC880936	UC880937	UC880938	UC880939	UC880940

*Please contact SPX FT

5. Complete seal kit

UC

5.2 Complete seal kit, double



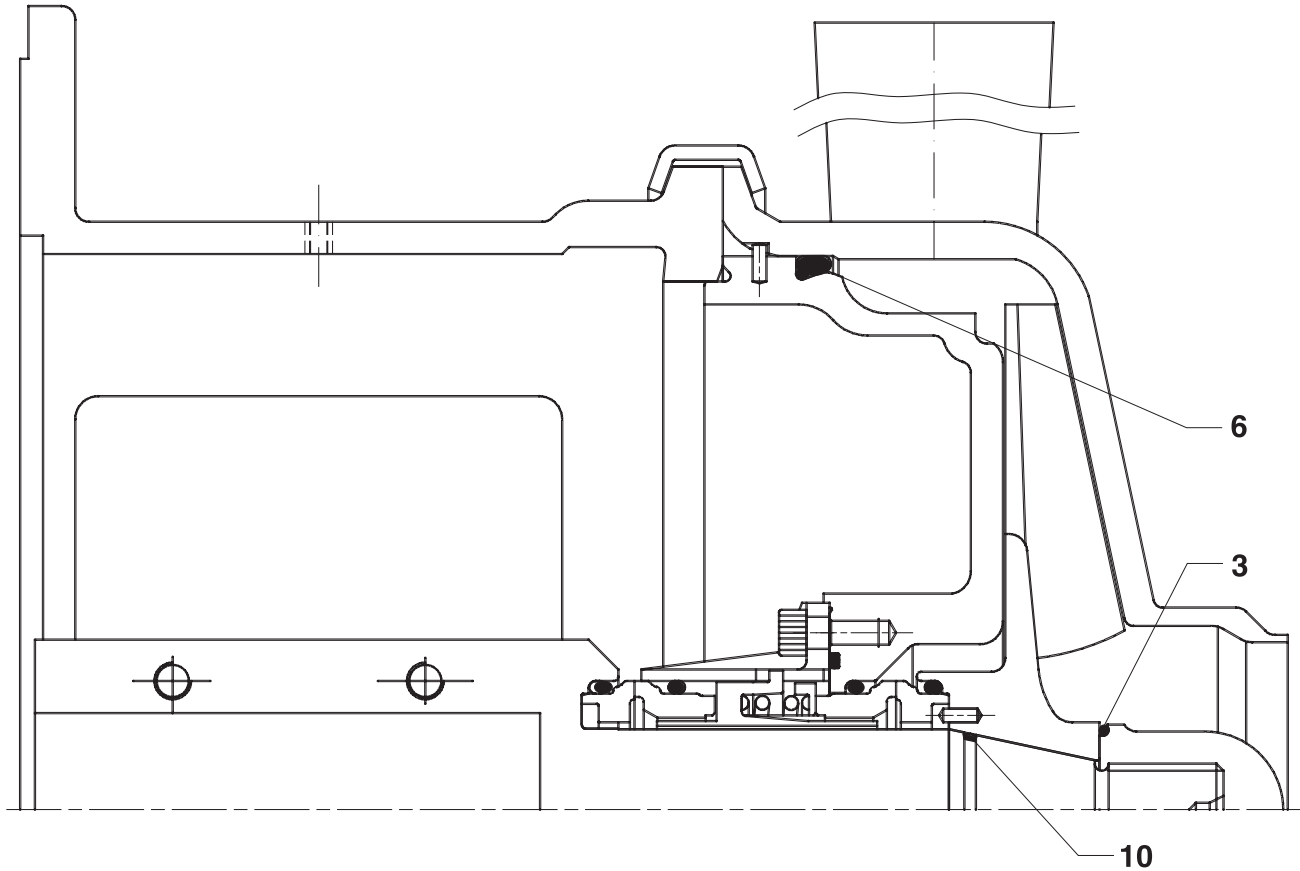
Reaction Bonded SiC		UC Pump type							
Item	Material	008/110	020/140	080/170	210/290	035/175	055/180	120/175	600/420
		Part No.							
3, 6, 10, 4x 5.5, 2x 5.6, 2x 5.7, 5.8, 5.10	SiC/SiC - SiC/Car EPDM	UC808560	UC808561	UC808563	UC808562	UC808563	UC808563	UC808568	UC808645
	SiC/Car - SiC/Car EPDM	UC808574	UC808575	UC808577	UC808576	UC808577	UC808577	UC808582	UC808644
	SiC/SiC - SiC/Car FPM	UC808588	UC808589	UC808591	UC808590	UC808591	UC808591	UC808596	UC808646
	SiC/Car - SiC/Car FPM	UC808602	UC808603	UC808605	UC808604	UC808605	UC808605	UC808610	UC808647
		008/200	035/210	060/220	110/230	350/260	040/240	080/255	130/290
3, 6, 10, 4x 5.5, 2x 5.6, 2x 5.7, 5.8, 5.10	SiC/SiC - SiC/Car EPDM	UC808566	UC808567	UC808568	UC808569	UC808570	UC808571	UC808572	UC808573
	SiC/Car - SiC/Car EPDM	UC808580	UC808581	UC808582	UC808583	UC808584	UC808585	UC808586	UC808587
	SiC/SiC - SiC/Car FPM	UC808594	UC808595	UC808596	UC808597	UC808598	UC808599	UC808600	UC808601
	SiC/Car - SiC/Car FPM	UC808608	UC808609	UC808610	UC808611	UC808612	UC808613	UC808614	UC808615

Self Sintered SiC		UC Pump type							
Item	Material	008/110	020/140	080/170	210/290	035/175	055/180	120/175	600/420
		Part No.							
3, 6, 10, 4x 5.5, 2x 5.6, 2x 5.7, 5.8, 5.10	SiC/SiC - SiC/Car EPDM	UC888560	UC888561	UC888563	UC888562	UC888563	UC888563	UC888568	*
	SiC/Car - SiC/Car EPDM	UC888574	UC888575	UC888577	UC888576	UC888577	UC888577	UC888582	*
	SiC/SiC - SiC/Car FPM	UC888588	UC888589	UC888591	UC888590	UC888591	UC888591	UC888596	*
	SiC/Car - SiC/Car FPM	UC888602	UC888603	UC888605	UC888604	UC888605	UC888605	UC888610	*
		008/200	035/210	060/220	110/230	350/260	040/240	080/255	130/290
3, 6, 10, 4x 5.5, 2x 5.6, 2x 5.7, 5.8, 5.10	SiC/SiC - SiC/Car EPDM	UC888566	UC888567	UC888568	UC888569	UC888570	UC888571	UC888572	UC888573
	SiC/Car - SiC/Car EPDM	UC888580	UC888581	UC888582	UC888583	UC888584	UC888585	UC888586	UC888587
	SiC/SiC - SiC/Car FPM	UC888594	UC888595	UC888596	UC888597	UC888598	UC888599	UC888600	UC888601
	SiC/Car - SiC/Car FPM	UC888608	UC888609	UC888610	UC888611	UC888612	UC888613	UC888614	UC888615

* Please contact SPX FT

6. O-rings kit

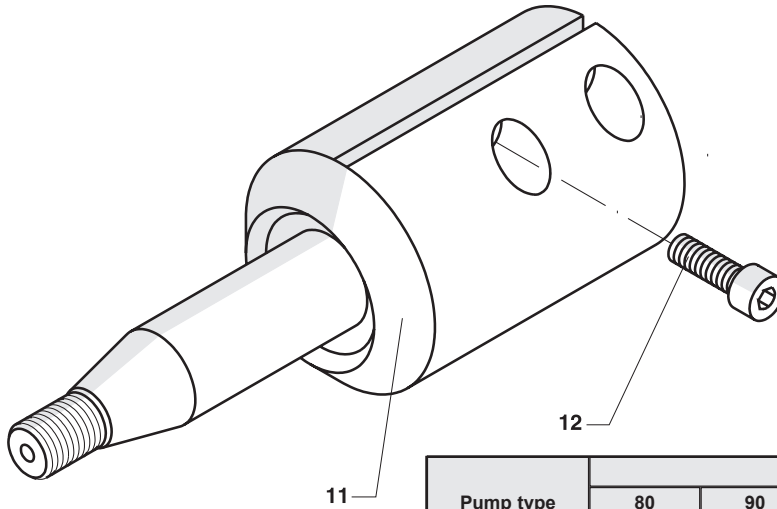
UC



Item	Material	UC Pump type							
		008/110	020/140	080/170	210/290	035/175	055/180	120/175	600/420
		Part No.							
3, 6, & 10	EPDM	UC808760	UC808761	UC808762	UC808763	UC808762	UC808762	UC808765	UC808789
3, 6, & 10	FPM(Viton)	UC808774	UC808775	UC808776	UC808777	UC808776	UC808776	UC808779	UC808788
		008/200	035/210	060/220	110/230	350/260	040/240	080/255	130/290
3, 6, & 10	EPDM	UC808766	UC808767	UC808765	UC808769	UC808770	UC808771	UC808772	UC808773
3, 6, & 10	FPM(Viton)	UC808780	UC808781	UC808779	UC808783	UC808784	UC808785	UC808786	UC808787

7. Shaft

UC



Pump type	Motor					
	80	90	100	112	132	160
Shaft Ø25						
UC/008/110	UC273844					
UC/020/140	UC261546	UC261559	UC261560	UC261560	UC261547	
UC/080/170		UC261559	UC261560	UC261560	UC261547	UC261548
UC/035/175		UC261559	UC261560	UC261560	UC261547	UC261548
UC/055/180		UC261559	UC261560	UC261560	UC261547	UC261548
UC/008/200		UC267329	UC267330	UC267330	UC267331	
UC/035/210		UC261559	UC261560	UC261560	UC261547	UC261548
Item 12						
Qty.	1	1	2	2	2	2
Screw	UC701942	UC771199	UC771199	UC771199	UC771199	UC771199

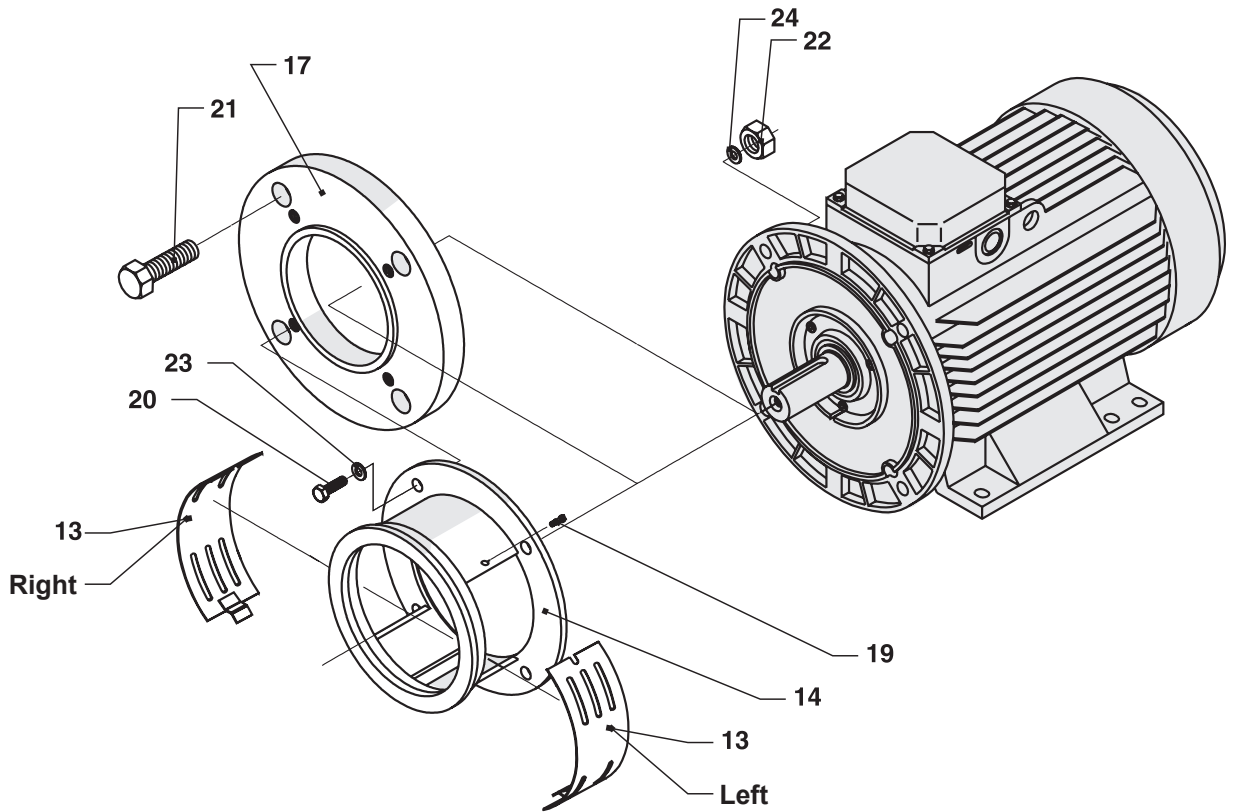
Pump type	Motor									
	90	100	112	132	160	180	200	225	250	280
Shaft Ø35										
UC/210/290					UC261551	UC261563	UC261552	UC261554		
UC/120/175	UC261561	UC261562	UC261562	UC261550	UC261551	UC261563	UC261552			
UC/060/220	UC261561	UC261562	UC261562	UC261550	UC261551	UC261563	UC261552			
UC/110/230	UC261561	UC261562	UC261562	UC261550	UC261551	UC261563	UC261552	UC261552		
UC/350/260				UC261550	UC261551	UC261563	UC261552	UC261552	UC261554	
UCi/350/260*				UC261596	UC261597	UC261598	UC261599	UC261599	UC261554	UC261555
UC/040/240	UC261561	UC261562	UC261562	UC261550	UC261551	UC261563	UC261552			
UC/080/255	UC261561	UC261562	UC261562	UC261550	UC261551	UC261563	UC261552	UC261552	UC261554	
UC/130/290		UC261562	UC261562	UC261550	UC261551	UC261563	UC261552	UC261552	UC261554	UC261555
Pos. 12										
Qty.	2	2	2	2	2	2	2	2	3	3
Screw	UC771199	UC771199	UC771199	UC771199	UC771199	UC771199	UC701700	UC701700	UC701700	UC701700

* UCi/350/260 2-pol motor

Pump type	Motor					
	180	200	225	250	280	315
Shaft Ø55						
UC/600/420	UC279924	UC279925	UC279926	UC279927	UC279928	UC279929
Item 12						
Qty.	2	2	3	3	3	3
Screw	UC781079	UC781079	UC781079	UC781079	UC781074	UC781074

8. Extension frame and shaft guard

UC



Pump type	Motor											
	80	90	100	112	132*	160	180	200**	225***	250	280	315
	Item 14 - Extension frame											
UC/008/110	UC188735											
UC/020/140	UC261566	UC261566	UC261566	UC261566	UC261566							
UC/080/170		UC261565	UC261565	UC261565	UC261565	UC261564						
UC/210/290						UC187587	UC187587	UC187587	UC187587			
UC/035/175		UC261565	UC261565	UC261565	UC261565	UC261564						
UC/055/180		UC261565	UC261565	UC261565	UC261565	UC261564						
UC/120/175		UC261567	UC261567	UC261567	UC261567	UC261568	UC261568	UC261568				
UC/600/420							UC261053	UC261053	UC261053	UC261054	UC261054	UC261055
UC/008/200		UC267320	UC267320	UC267320	UC267320							
UC/035/210		UC261567	UC261567	UC261567	UC261567	UC261568						
UC/060/220		UC261567	UC261567	UC261567	UC261567	UC261568	UC261568	UC261568				
UC/110/230		UC261569	UC261569	UC261569	UC261569	UC261570	UC261570	UC261570	UC261570			
UC/350/260					UC168669	UC168670	UC168670	UC168670	UC168670	UC187570	UC187570	
UC/040/240		UC261571	UC261571	UC261571	UC261571	UC261572	UC261572	UC261572				
UC/080/255		UC261573	UC261573	UC261573	UC261573	UC261574	UC261574	UC261574	UC261574	UC261028		
UC/130/290			UC168671	UC168671	UC168671	UC187576	UC187576	UC187576	UC187576	UC187589	UC187589	

	Item 17 - Flange											
*					UC267665							
**								UC267666				
***									UC267667			

8. Extension frame and shaft guard

UC

UC Pump type	Qty.	Motor											
		80	90	100	112	132	160	180	200	225	250	280	315
		Item 13 - Shaft guard											
008/110	2 R/L	UC800836											
020/140	2 R/L	UC188334	UC188334	UC188334	UC188334	UC188334							
080/170	1 R		UC188333	UC188333	UC188333	UC188333							
	1 L		UC188285	UC188285	UC188285	UC188285							
	2 R/L						UC188259						
210/290	2 R/L						UC188587	UC188587	UC188587	UC188587			
035/175	1 R		UC188333	UC188333	UC188333	UC188333							
	1 L		UC188285	UC188285	UC188285	UC188285							
055/180	2 R/L						UC188259						
120/175	1 R		UC188339	UC188339	UC188339	UC188339							
	1 L		UC188597	UC188597	UC188597	UC188597							
	2 R/L						UC188335	UC188335	UC188335				
600/420	2 R/L						UC277319	UC277319	UC277319	UC277319	UC277319	UC277319	UC277319
035/210	1 R		UC188339	UC188339	UC188339	UC188339							
	1 L		UC188597	UC188597	UC188597	UC188597							
008/200	2 R/L						UC188335						
060/220	1 R		UC188339	UC188339	UC188339	UC188339							
	1 L		UC188597	UC188597	UC188597	UC188597							
	2 R/L						UC188335	UC188335	UC188335				
110/230	1 R		UC188339	UC188339	UC188339	UC188339							
	1 L		UC188597	UC188597	UC188597	UC188597							
	2 R/L						UC188335	UC188335	UC188335	UC188335			
350/260	1 R					UC188333					UC274032	UC274032	
	1 L					UC188285					UC188591	UC188591	
	2 R/L						UC188337	UC188337	UC188337	UC188337			
040/240	1 R		UC188284	UC188284	UC188284	UC188284							
	1 L		UC188283	UC188283	UC188283	UC188283							
080/255	2 R/L						UC188335	UC188335	UC188335	UC188335	UC188592		
130/290	2 R/L			UC188588	UC188588	UC188588	UC188589	UC188589	UC188589	UC188589	UC188590	UC188590	

R= Right

L=Left

Description	Item	Qty	Motor												
			80(008/110)	80	90	100	112	132	160	180	200	225	250	280	315
			Part no.												
Screw	19	2	UC700420	UC700420	UC700420	UC700420	UC700420	UC700420	UC700420	UC700420	UC700420	UC700420	UC700420	UC700420	
Screw	20	4	UC770138	UC707608	UC700234	UC700234	UC700234	UC700234	*UC771944	*UC771944	*UC772568	UC772568	**UC770141	**UC770141	**UC773796
Screw	21	4						UC701078			UC772567	UC772567			
Nut	22	4						UC701387	UC701387	UC701387	**UC701387	**UC701387	**UC701387	**UC701670	
Washer	23	4		UC771425	UC771425	UC771425	UC771425	UC771425							
Washer	24	4							UC701254	UC701254	UC701254	**UC701254	**UC701254	**UC701254	**UC773729

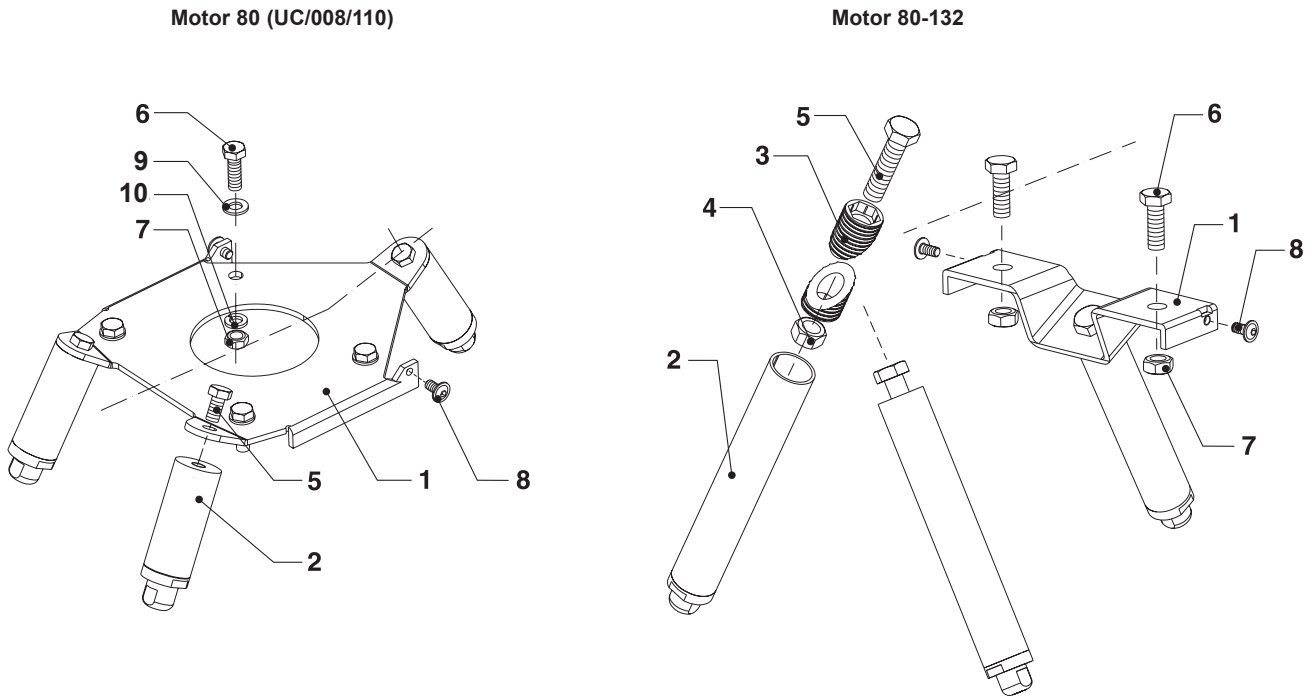
* Qty. = 2

** Qty. = 8

9. Adjustable Feet

UC

9.1 Motor Type 80-132



			Motor					
			80 (008/110)	80	90	100	112	132
			Centre height					
			160	260				
Item	Qty.	Description	Part no.					
		Complete frame	UC808800	UC808801	UC808802	UC808803	UC808804	UC808805
1	1	Frame	UC273965	UC809054	UC809055	UC809056	UC809057	UC809058
2	2	Leg, complete	UC809064*	UC809059	UC809061	UC809061	UC809061	UC809061
3	4	Split bushing	-- -- --	UC282473	UC282473	UC282473	UC282473	UC282473
4	2	Nut	UC771174	UC700242	UC700242	UC700242	UC700242	UC700242
5	2	Screw	UC700690*	UC703141	UC701981	UC701981	UC701981	UC701981
6	2	Screw	UC700234**	UC701380	UC701380	UC701380	UC701380	UC700238
7	2	Nut	UC700241**	UC700864	UC700864	UC700864	UC700864	UC700242
8	2	Screw, flange head	UC700420	UC700420	UC700420	UC700420	UC700420	UC700420
9	4	Washer	UC701478	----	----	----	----	----
10	4	Washer	UC771147	----	----	----	----	----

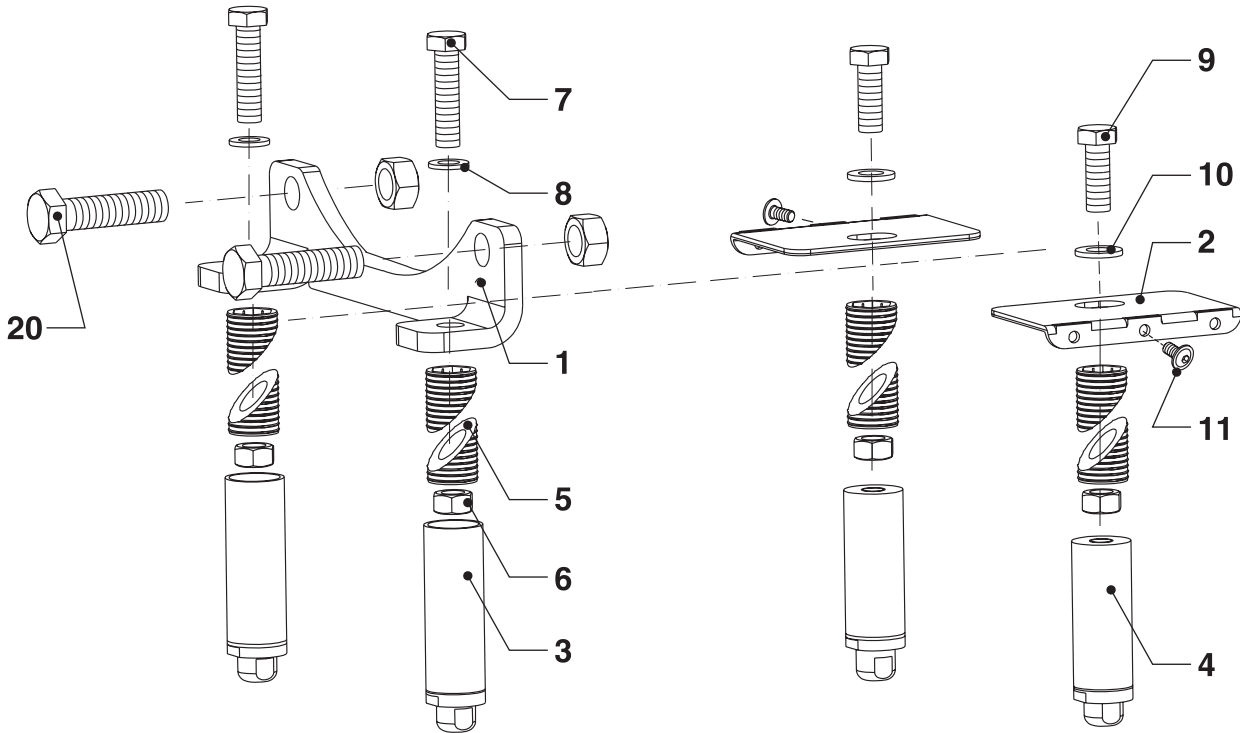
* UC/008/110 Qty. = 3

** UC/008/110 Qty. = 4

9. Adjustable Feet

UC

9.2 Motor Type 160-200

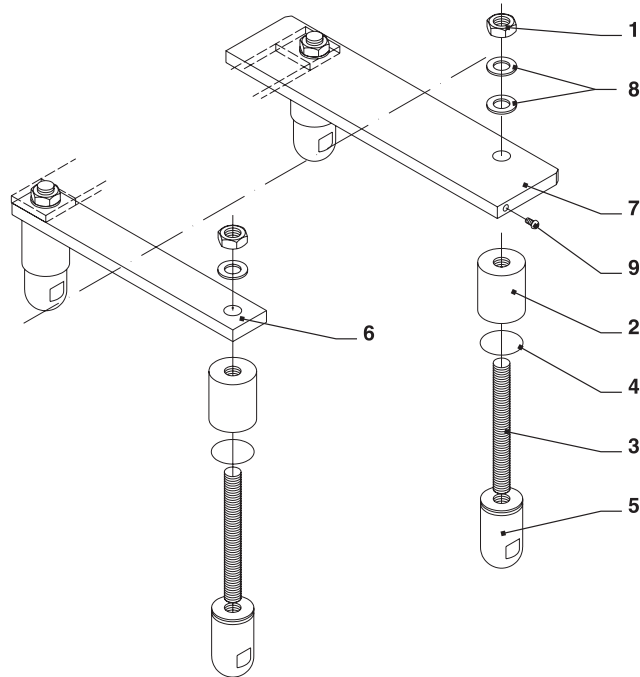


			Motor							
			160			180			200	
			Centre height							
			260	305	350	260	305	350	305	350
Item	Qty.	Description	Part no.							
-	-	Complete frame	UC808806	UC808807	UC808808	UC808809	UC808810	UC808811	UC808812	UC808813
1	1	Frame for front leg	UC279962	UC279962	UC279962	UC279962	UC279962	UC279963	UC279963	UC279963
2	2	Angle plate	UC282488	UC282488	UC282488	UC282488	UC282488	UC282488	----	----
2	1	Angle plate, R	----	----	----	----	----	----	UC808709	UC808709
2	1	Angle plate, L	----	----	----	----	----	----	UC808710	UC808710
3	4	Leg, complete	UC809063	UC809051	UC809061	----	----	----	UC809065	UC809066
3	2	Leg front, complete	----	----	----	UC809063	UC809051	UC809066	----	----
4	2	Leg back, complete	----	----	----	UC809062	UC809060	UC809049	----	----
5	8	Split bushing	----	UC282473	UC282473	----	UC282473	UC282473	UC282473	UC282473
6	4	Nut	----	UC700242	UC700242	----	UC700242	UC700242	UC700242	UC700242
7	2	Screw	UC701265	UC703141	UC703141	UC701265	UC703141	UC703141	UC703141	UC703141
8	2	Washer	UC701475	UC701475	UC701475	UC701475	UC701475	UC701475	UC701475	UC701475
9	2	Screw	UC702996	UC771697	UC771697	UC702996	UC771697	UC771697	UC771698	UC771698
10	2	Washer	UC781058	UC781058	UC781058	UC781058	UC781058	UC781058	UC781058	UC781058
11	2	Screw, flanged head	UC700420	UC700420	UC700420	UC700420	UC700420	UC700420	UC700420	UC700420
20	2	Screw	UC701474	UC701474	UC701474	UC701474	UC701474	UC701474	UC701533	UC701533

9. Adjustable Feet

UC

9.3 Motor Type 225-250

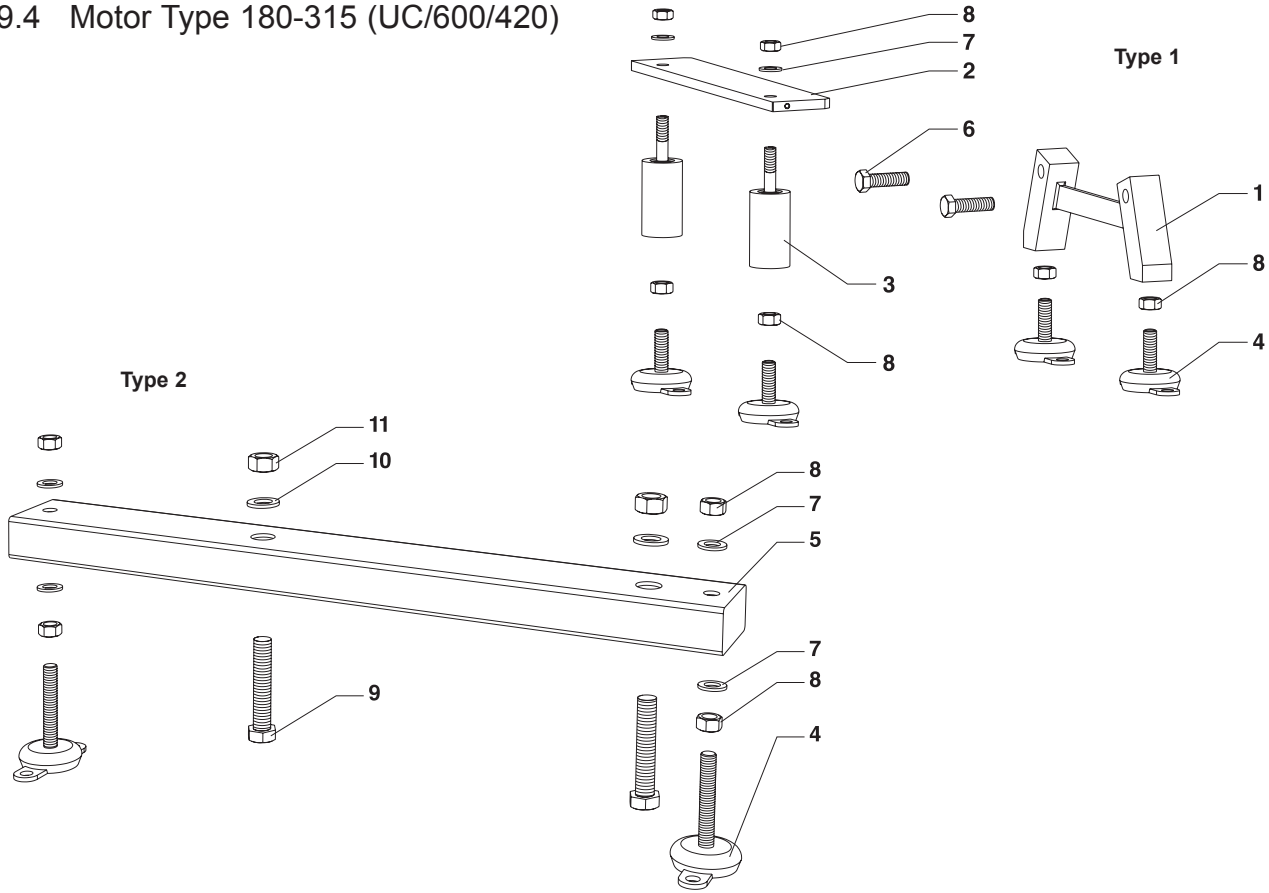


Item	Qty.	Description	Motor		
			225		250
			Centre height		
			305	350	350
			Part no.		
-	-	Complete frame	UC801108	UC801109	UC801110
1	4	Nut	UC772449	UC772449	UC772449
2	4	Leg	UC268474	UC194461	UC194460
3	4	Threaded rod	UC268489	UC268492	UC268490
4	4	O-ring	UC772491	UC772491	UC772491
5	4	Ball type foot	UC268469	UC268468	UC268468
6	1	Fitting	UC273824	UC273824	UC273825
7	1	Fitting	UC268465	UC268465	UC273822
8	6	Washer	UC772450	UC772450	UC772450
9	2	Screw	UC700420	UC700420	UC700420

9. Adjustable Feet

UC

9.4 Motor Type 180-315 (UC/600/420)



			Motor					
			180	200	225	250	280	315
			Type 1			Type 2		
			Centre height					
			350	350	350	350	375	415
Item	Qty.	Description	Part no.					
-	-	Complete frame	UC808740	UC808741	UC808742	UC808743	UC808744	UC808745
1	1	Frame	UC279943	UC279943	UC279943	UC279943	----	----
2	1	Fitting	UC268485*	UC273821	UC279957	UC279958	----	----
3	2	Leg	UC282445	UC282446	UC282447	UC282448	----	----
4	4	Machine feet	UC773874	UC773874	UC773874	UC773874	UC773875	UC773875
5	2	Ball type foot	----	----	----	----	UC282449	UC282450
6	2	Screw	UC701474	UC701474	UC701474	UC701474	----	----
7	2**	Washer	UC701254	UC701254	UC701254	UC701254	UC701254	UC701254
8	6**	Nut	UC701387	UC701387	UC701387	UC701387	UC701387	UC701387
9	4	Screw	----	----	----	----	UC773715	UC773715
10	4	Washer	----	----	----	----	UC773488	UC773488
11	4	Nut	----	----	----	----	UC701670	UC701670

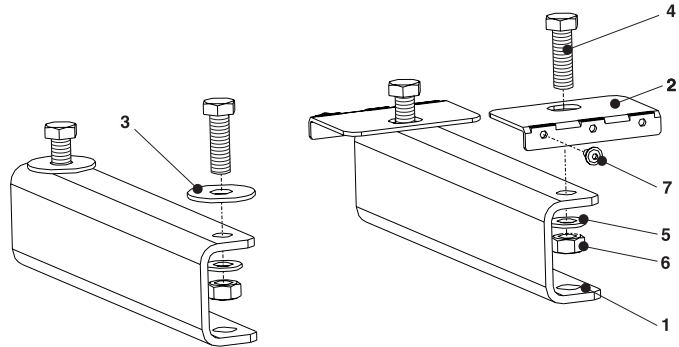
* Motor 180 Qty. = 2

** Type 2 Qty. = 8

10. Bracket Type A

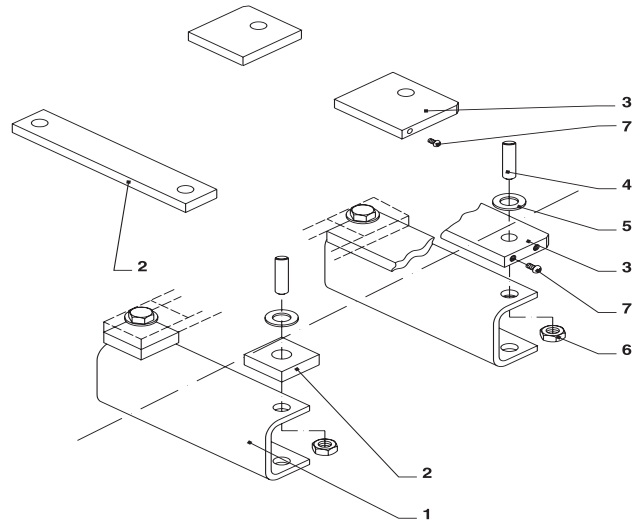
UC

10.1 Motor Type 80-180



			Motor						
			80	90	100	112	132	160	180
			Centre height						
			160	170	180	192	212	240	260
			Part no.						
Item	Qty	Description							
-	-	Bracket, complete	UC809083	UC809084	UC809085	UC809086	UC809087	UC809088	UC809089
1	2	Bracket	UC279980	UC279981	UC279982	UC279983	UC279984	UC279985	UC279986
2	2	Angle plate	UC282502	UC282502	UC282503	UC282503	UC282503	UC282488	UC282488
3	2	Washer	UC781058	UC781058	UC781058	UC781058	UC781058	UC781062	UC781062
4	4	Bolt	UC701686	UC701669	UC701669	UC701669	UC702996	UC773643	UC773643
5	4	Washer	UC701478	UC701479	UC701479	UC701479	UC701475	UC772450	UC772450
6	4	Nut	UC700241	UC700864	UC700864	UC700864	UC700242	UC772449	UC772449
7	2	Screw, fl. head	UC700420	UC700420	UC700420	UC700420	UC700420	UC700420	UC700420

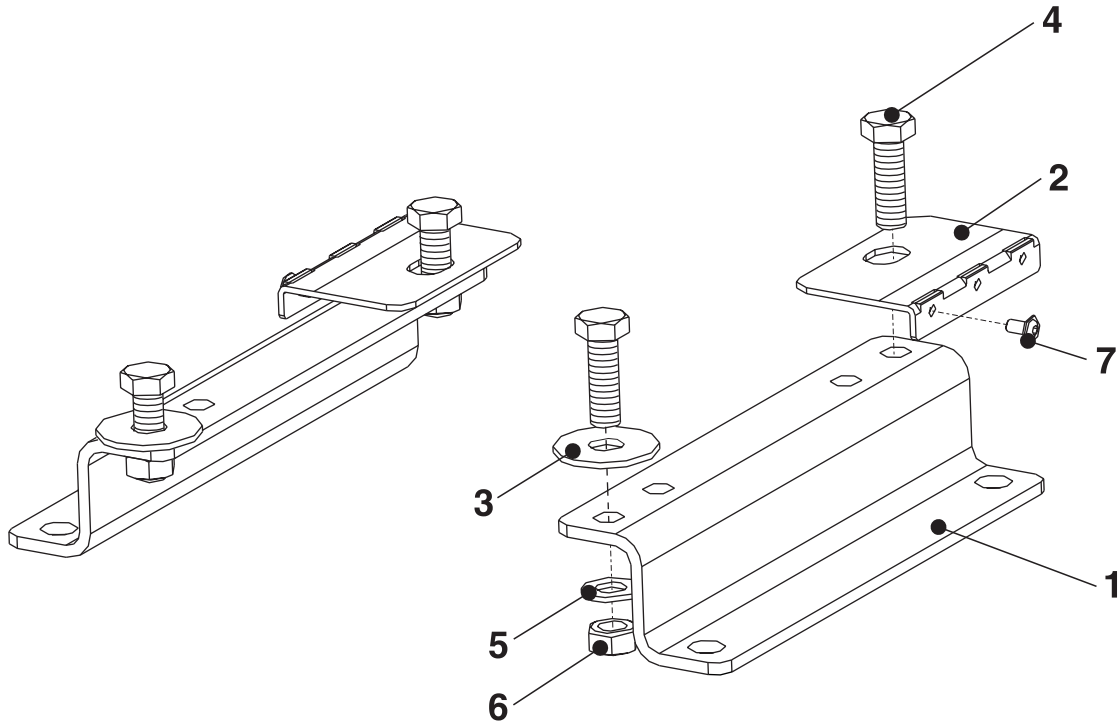
10.2 Motor Type 180-315



			Motor						
			180	200	200	225	250	280	315
			Centre height						
			305	280	305	305	330	360	395
			Part no.						
Item	Qty.	Description							
-	-	Bracket, complete	UC809090	UC809091	UC809092	UC809093	UC809094	UC809095	UC809096
1	2	Bracket	UC282421	UC267732	UC282422	UC267733	UC267734	UC282423	UC282424
2	2	Fitting, front	UC268479	----	----	UC273824	UC273825	----	----
2	1	Fitting, front	----	UC273820	UC273820	UC273824	UC273825	----	----
3	2	Fitting, rear M	UC268459	----	----	----	----	----	----
3	2	Fitting, rear L	UC268461	----	----	----	----	----	----
3	1	Fitting, rear L/M	----	UC273820	UC273820	UC268465	UC273822	----	----
4	4	Threaded rod	UC268489	UC268489	UC268489	UC268489	UC268489	UC268489	UC268489
5	8	Washer	UC772450	UC772450	UC772450	UC772450	UC772450	UC772450	UC772450
6	8	Nut	UC772449	UC772449	UC772449	UC772449	UC772449	UC772449	UC772449
7	2	Screw, fl. head	UC700420	UC700420	UC700420	UC700420	UC700420	----	----

11. Bracket Type B

UC



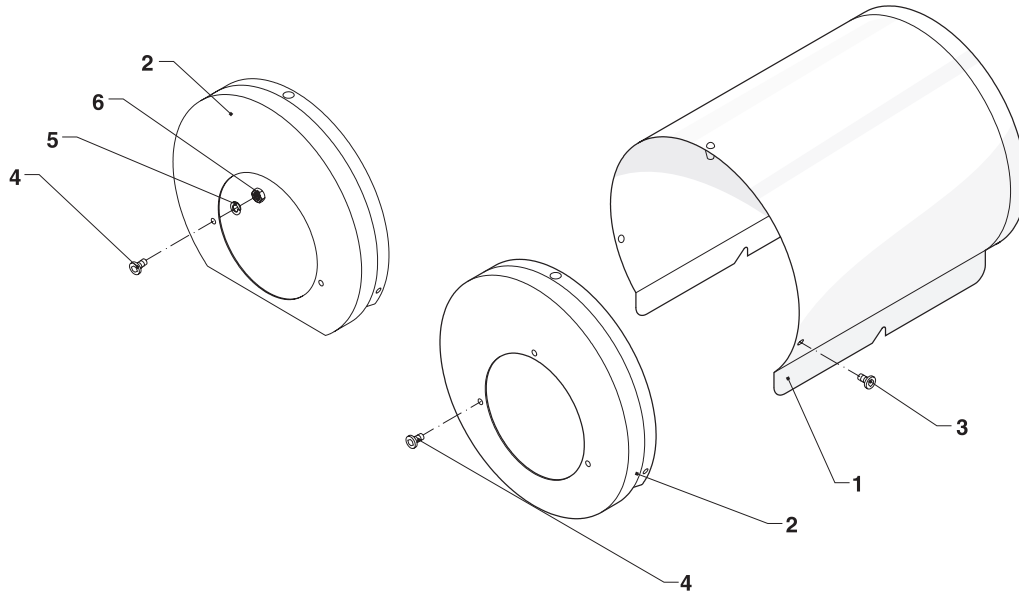
			Motor							
			80	90	100	112	132	160	180	200
			Centre height							
			225	225	225	225	225	225	225	225
Item	Qty.	Description	Part no.							
-	-	Bracket, complete	UC809097	UC809098	UC809099	UC809100	UC809101	UC809102	UC809103	UC809104
1	2	Bracket	UC279987	UC279988	UC279989	UC279990	UC279991	UC279992	UC279993	UC182913
2	2	Angle plate	UC282502	----	UC282503	UC282503	UC282503	UC282488	UC282488	----
2	2	Fitting, back	----	----	----	----	----	----	----	UC268487
3	2*	Washer	UC781058	----	UC781058	UC781058	UC781058	UC781062	UC781062	UC781062
4	2	Screw	----	----	----	----	----	----	----	UC781066
4	4**	Screw	UC701686	UC756001	UC701669	UC701669	UC702996	UC773643	UC773643	UC773868
5	4	Washer	UC701478	UC701479	UC701479	UC701479	UC701475	UC772450	UC772450	UC772450
6	4	Nut	UC700241	UC700864	UC700864	UC700864	UC700242	UC772449	UC772449	UC772449
7	2	Screw, fl. head	UC700420	UC700420	UC700420	UC700420	UC700420	UC700420	UC700420	UC700420

* Motor 200 Qty. = 4

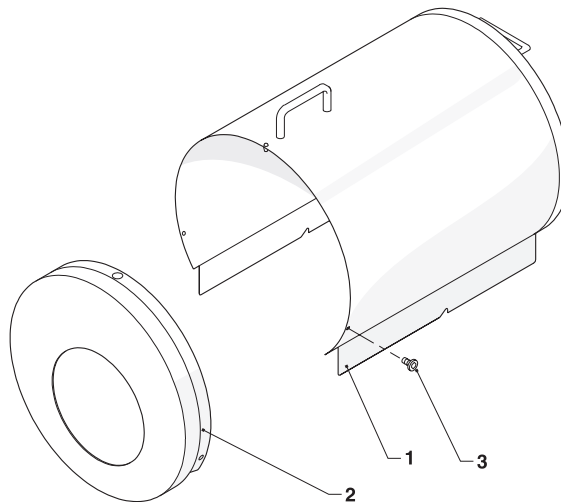
** Motor 200 Qty. = 2

12. Shroud

UC



			Motor					
			UC/008/110	80	90	100	112	132
Item	Qty.	Description	Part no.					
1	1	Shroud	UC188445	UC188445	UC188445	UC188446	UC188447	UC188447
2	1	Collar	UC188809	UC194420	UC194421	UC194422	UC194472	UC194424
3	2	Screw	UC773113	UC773113	UC773113	UC773113	UC773113	UC773113
4	3	Screw	----	UC700420	----	----	----	----
4	2	Screw	UC700420	----	----	----	----	----
5	2	Washer	UC771173	----	----	----	----	----
6	2	Nut	UC700240	----	----	----	----	----



			Motor				
			160	180	200	225	250
Item	Qty.	Description	Part no.				
1	1	Shroud	UC188448	UC188449	UC188450	UC188452	UC188452
2	1	Collar	UC194425	UC194426	UC194427	UC194477	UC194429
3	4	Screw	UC773113	UC773113	UC773113	UC773113	UC773113

UC

CENTRIFUGAL PUMP
SPARE PARTS LIST



SPX Flow Technology Poland sp. z o.o.

Hermana Frankego 9
85-862 Bydgoszcz, Poland
P: (+48) 52 525 9900
F: (+48) 52 525 9909

SPX reserves the right to incorporate design and material changes without notice or further obligation.

Design features, materials of construction and dimensional data, as described in this bulletin, are provided for your information only and should not be relied upon unless confirmed in writing. Please contact your local sales representative for product availability in your region. For more information please visit www.spx.com.

ISSUED 04/2015 – Original document
COPYRIGHT © 2013 SPX Corporation