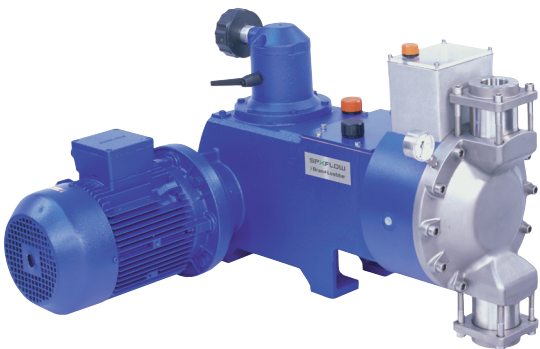


Product Overview





For more than 80 years, SPX FLOW's Bran+Luebbe brand has been providing customers with high quality metering, processing and analysing equipment.

As part of SPX FLOW, we are one of the world's most reputable manufacturers of metering and process pumps, process systems as well as analyzing technologies. Our engineers have comprehensive process and applications knowledge across a wide range of markets. This has resulted in product innovations and developments which harness the latest technology whilst meeting the highest quality standards.

ProCam Metering Pumps

The ProCam modular building block system allows single and multi stream pumps to provide an economical and reliable solution for a wide range of metering applications.



PROCAM DIAPHRAGM/PLUNGER PUMP

Engineered, single or multi stream pump designed to meet specific application requirements.

Diaphragm pump:*

Flow range: up to 3,000 l/h
Operating Pressure: up to 20 bar*

Plunger Pump:*

Flow range: 0.16 to 60.5 l/h
Operating Pressure: up to 80 bar*



PROCAM COMPACT METERING STATION

Compact design - ProCam metering pump and metering station allows easy preparation of products to be metered.

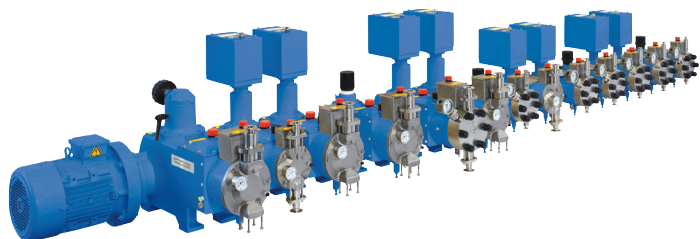
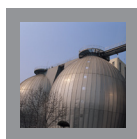
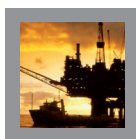
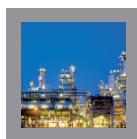
Flow range: 5 to 500 l/h
Operating Pressure: up to 20 bar*
Tank size: 60 to 500 l



* for specific types and designs

NOVADOS Metering Pumps

The NOVADOS offers an unparalleled range of metering pumps for an extensive number of liquid metering or blending applications.



* for specific types and designs

NOVADOS DIAPHRAGM / PLUNGER PUMPS

Robust pump with outstanding performance parameters to suit applications using hermetically sealed pump heads to handle hazardous liquids.

Using the same drive design as for diaphragm pumps, the plunger pump head option can be considered for less demanding applications.

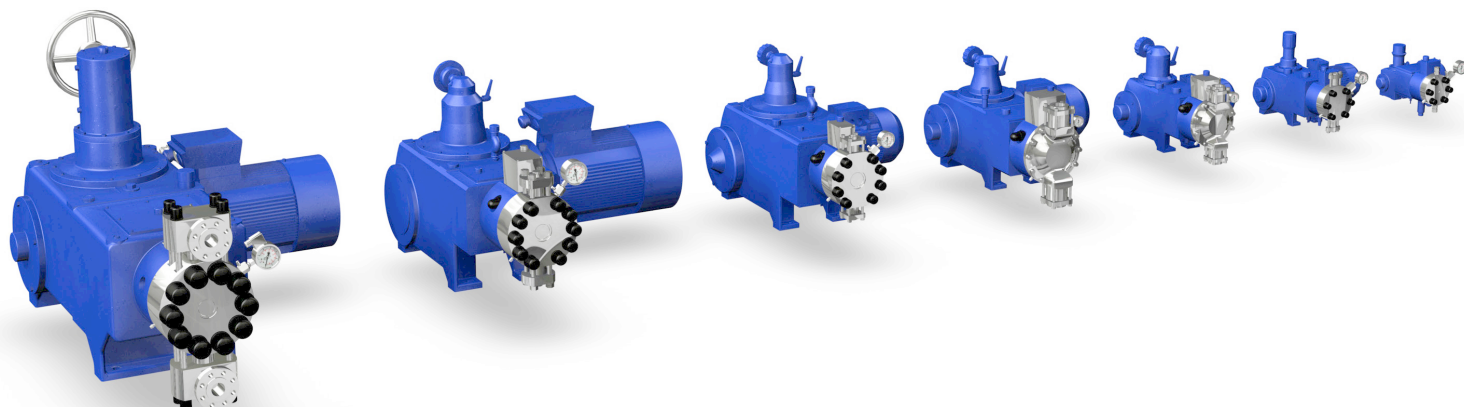
Flow range: 400 ml/h to 10,000 l/h
Operating Pressure: up to 1,000 bar* (diaphragm)
up to 500 bar* (plunger)

NOVADOS PUMPS WITH DOUBLE-ACTING DIAPHRAGM PUMP HEAD

Twice the flow of a traditional diaphragm pump head it removes the need for a duplex design, reducing footprint and weight. Equipped with a suction pressure module as special option it is suitable for low energy recirculation processes.

MODULAR BUILDING BLOCK - HORIZONTAL AND VERTICAL CONFIGURATION

Combination of diaphragm or plunger pumps for multi-stream applications with gears and pump heads matching the specifications of the customer.



NOVAPLEX Process Diaphragm Pumps

The Bran+Luebbe NOVAPLEX is a flexible high performance process diaphragm pump handling toxic or aggressive liquids and suspensions at high flow rates and pressure. Typical applications can be found in the chemical, petrochemical as well as oil & gas industries.



NOVAPLEX VECTOR

A revolutionary design in the market for diaphragm process pumps! This design has a unique layout that offers a more compact pump.

Flow range: 0.1 - 70 m³/h
Operating Pressure: up to 400 bar*

NOVAPLEX INTEGRAL

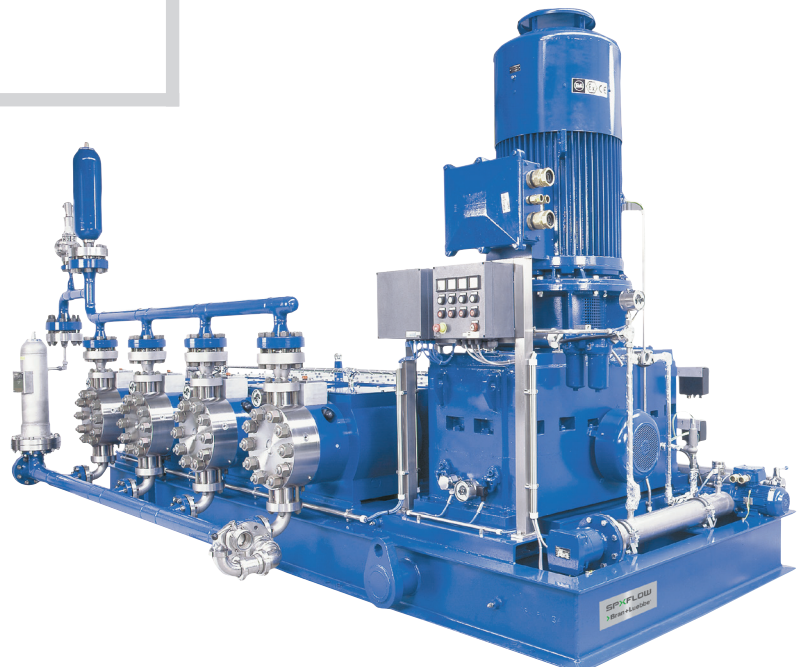
NOVAPLEX Integral diaphragm process pumps are powerful and exact feed pumps in processes where high capacities and/or high operating pressures are required. Equipped with an integrated reduction gear the pumps are very compact with a small foot print.

Flow range: up to approx. 60 m³/h
Operating Pressure: up to 1,000 bar*

NOVAPLEX CLASSIC

Designed with an external reduction gear this pump allows the incorporation of customer specified gearboxes.

Flow range: up to approx. 80 m³/h
Operating Pressure: up to 1,000 bar*



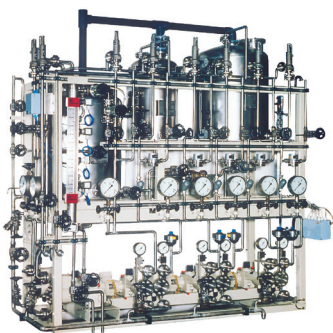
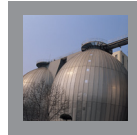
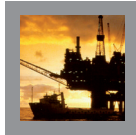
* for specific types and designs

AutoBlend Process Systems

Process units designed for high quality products blended from liquids, pastes and dissolved powders.

OUR CORE COMPETENCE:

- Dilution of chemicals
- Production of personal care products and household detergents
- Systems in paper production
- Continuous dilution of ether sulphate paste
- Systems in water treatment plants
- Production plants for industrial cleaners and cooling agents
- Oil & Gas



TYPICAL SYSTEMS*:

CHEMICAL INDUSTRY

Preparation and metering of cold-coating agent for glass containers. Specifically pharmaceutical phials need internal coating to meet the quality requirements of scratch-free internal surface.

PERSONAL CARE AND HOUSEHOLD DETERGENTS

The production of shampoos, shower gels, heavy and standard liquid detergents, fabric softener, and household detergents require an exact metering and suitable mixing process in order to meet the stringent specifications. Using high quality SPX components the customer can rely on constant quality, low operating cost, reduced maintenance and high availability of the system.

WATER TREATMENT

Treating boiler feed water is a major task in power plants (conventional and nuclear) and district heating. We supply customer specified plants for various applications.

OIL & GAS INDUSTRY

Within the Oil and Gas Industry, the requirements for Chemical Injection Packages are very diverse depending on the application, location, number of chemicals, multi-point injection, increases in production output and changes in production conditions. We supply basic single chemical / single injection point skids to multi-ingredient chemical storage and pumping packages.

* more applications on request

Mixers

Static or dynamic in-line mixers are available for a variety of operations covering a wide range of applications.



PENTAX - DYNAMIC MIXER

The dynamic in-line PENTAX mixer is designed to meet the demands of industrial markets. An hygienic option is also available. Both designs incorporate the following characteristics :

- High reliability and trouble-free operation due to the robust design
- Stator and rotor mixing system ensures a constant and stable mixing result
- Various options of materials for mechanical seals, gaskets, and drives are available to meet specific process requirements

Throughput: up to 50,000l/h*
Operating Pressure: up to 10 bar

N-FORM - STATIC MIXER

Simple and robust with no moving parts for trouble-free operation.

- Materials: SS 1.4571 / 1.4581*
- Diameters: DN 15 to DN 65
- Connection: as required
- Heating/cooling: jacketing possible
- The mixing elements can be removed for cleaning and inspection.



Analyzers

With a wide range of process analyzers and an experienced team, Bran+Luebbe is an internationally recognised brand. The latest technology, reliable service and support are offered for the water and waste water treatment industries.



POWERMON

The PowerMon is the latest development in the Bran+Luebbe fully automatic on-line process analyzer family. The measuring range reaches from normal concentrations down to traces by using wet-chemical reactions. Fully automatic operation, self-monitoring, and automatic recalibration make them an ideal on-line process analyzer.

PowerMon Titrometer

BO_3^{3-} , hardness, H_2O_2 , peracetic acid, acidity (p/m-value), S^{2-}

PowerMon Kolorimeter

Al^{3+} , Cl_2 , ClO_2 , Cr^{6+} , Co , CN^- , Cu^{2+} , $\text{Fe}^{2+/3+}$, Hazen, Mn^{2+} , N_2H_4 , NH_4^+ , Ni^{2+} , NO_3^- , NO_2^- , Phenol, PO_4^{3-} , TP, S^{2-}

PowerMon Silikometer

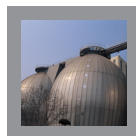
SiO_2

PowerMon Natriometer

Na^+

PowerMon Ionometer

CO_2 , Cl^- , K^+ , NH_4^+ , F^- , NO_3^-



POWERMON S

The PowerMon S is a compact closed multi-component analyzing system. Based on spectrometry it is an easy-to-handle economic system.

- Multi-component on-line analyzer
- Measured components: total nitrogen, total phosphate, DOC, CSB
- Measurement of $\text{NH}_4^+ - \text{N}$ / $\text{NO}_3^- - \text{N}$ / $\text{PO}_4^{3-} - \text{P}$
- Used in waste-water treatment plants, rivers, lakes, and coastal areas

SPXFLOW

SPX FLOW TECHNOLOGY NORDERSTEDT GMBH SERVICES THE FOLLOWING SPX FLOW BRANDS:

› Bran+Luebbe®

› Johnson Pump®

› Lightnin®

› Plenty®

› Waukesha Cherry-Burrell®

You can contact us by phone under:

SERVICE

Hotline	+49 40 52202 - 405
Service Technician	+49 40 52202 - 428
Technical Information	+49 40 52202 - 237 /-360
Repairs at Bran+Luebbe	+49 40 52202 - 407

SPARE PARTS

Offers	+49 40 52202 - 335
Order Handling	+49 40 52202 - 336
E-Mail	servicepumpen@spxflo.com

Global Locations

EMEA

SPX FLOW TECHNOLOGY

Werkstraße 4
D-22844 Norderstedt
Germany
Phone: +49 (0) 40 - 522 02 -0
E-Mail: branluebbe@spxflo.com

EMEA

SPX FLOW TECHNOLOGY

Ironstone Way
Brixworth, Northants, NN6 9UD
United Kingdom
Phone: +44 (0) 1604 880751
E-Mail: ftbrixworthsales@spxflo.com

EMEA

SPX FLOW TECHNOLOGY

P.O. Box 299745,
Downtown Jebel Ali
The Galleries 4
Dubai, U.A.E.
Phone: +971 481 43400
E-Mail: FT.Dubai.sales@spxflo.com

AMERICAS

SPX FLOW, INC.

4151 North Service Road
Burlington
ON, L7L 4X6, Canada
Phone: +1 (905) 315 3800
E-Mail: cu.burlington@spxflo.com

AMERICAS

SPX FLOW TECHNOLOGY

Rua João Daprat, 231
São Bernardo do Campo
SP 09600-010 - Brazil
Phone: +55 11 2127 8278

AMERICAS

SPX FLOW TECHNOLOGY (F&B GROUP)

611 Sugar Creek Road
Delavan, WI 53115 USA
Phone: +1 (800) 252-5200 or
+1 (262) 728-1900
E-Mail: branluebbe.americas@spxflo.com

APAC

SPX FLOW TECHNOLOGY

20 Pioneer Crescent #06-01
West Park BizCentral
Singapore 628555
Phone: +65 6568 1568
E-Mail: asia.pacific@spxflo.com

APAC

SPX FLOW TECHNOLOGY SHANGHAI OFFICE

1568 Hua Shan Road
5F Treasury Building
Changning District
Shanghai 20052 - PR China
Phone: +86 21 2208 5858
E-Mail: asia.pacific@spxflo.com

SPX FLOW reserves the right to incorporate our latest design and material changes without notice or obligations.

Design features, materials of construction and dimensional data, as described in this bulletin, are provided for your information only and should not be relied upon unless confirmed in writing. Please contact your local sales representative for product availability in your region. For more information visit www.spxflo.com.

The green "›" and "x" are trademarks of SPX FLOW, Inc.