



fluidity.

nonstop

IT'S ABOUT KEEPING YOUR PROCESSES RUNNING



**Hygienic
Pump Repair**

 **AXFLOW**

fluidity. nonstop

IT'S ABOUT KEEPING YOUR PROCESSES RUNNING

About AxFlow

Part of Axel Johnson AB with sales of over 7 billion euro and 20,000 employees worldwide, the AxFlow Group with offices and service locations in 26 European countries employing nearly 500 people in total.

The AxFlow Group is the largest distributor of positive displacement pumps and related products and services in Europe. The company represents world-leading suppliers, and adds considerable customer value by industrial know-how, fast and reliable deliveries and a wide range of technical services.

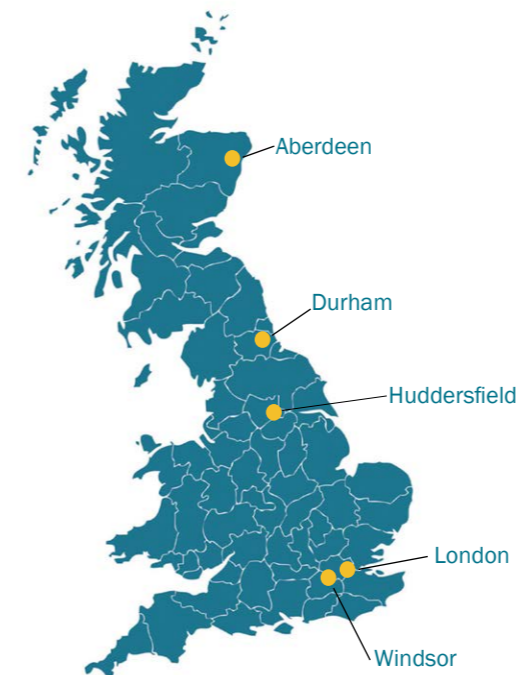


AxFlow has developed *fluidity.nonstop* a concept through which we provide products and services that encompass all aspects connected with the smooth running of process pumps.



A leader in the supply of pumps and process equipment to the UK Food & Beverage Industry

In the UK AxFlow has over 65 years history operating from 5 locations across the country from which we supply a multitude of process pumps and a range of pump service and repair packages.



Hygienic Pumps

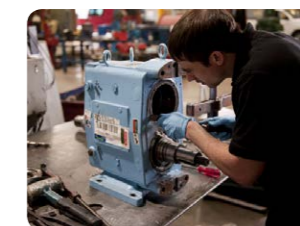
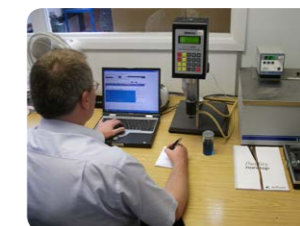
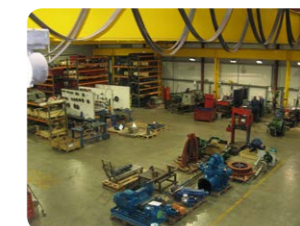
AxFlow is the largest supplier of positive displacement pumps in the UK and is a key player in the provision of pump and pump related products to the UK Food & Beverage Production Industry. Our range of hygienic pump products includes; AODD, centrifugal, rotary lobe, rotary circumferential piston, eccentric disc and vane pumps



Pump Services

To support our sales of pump equipment we have established pump repair facilities across the UK.

Our pump services not only include pump repair but also installation, monitoring, site surveys, a range of service agreements and liquid analysis with our in-house rheology measuring equipment.





Comprehensive hygienic facilities and procedures

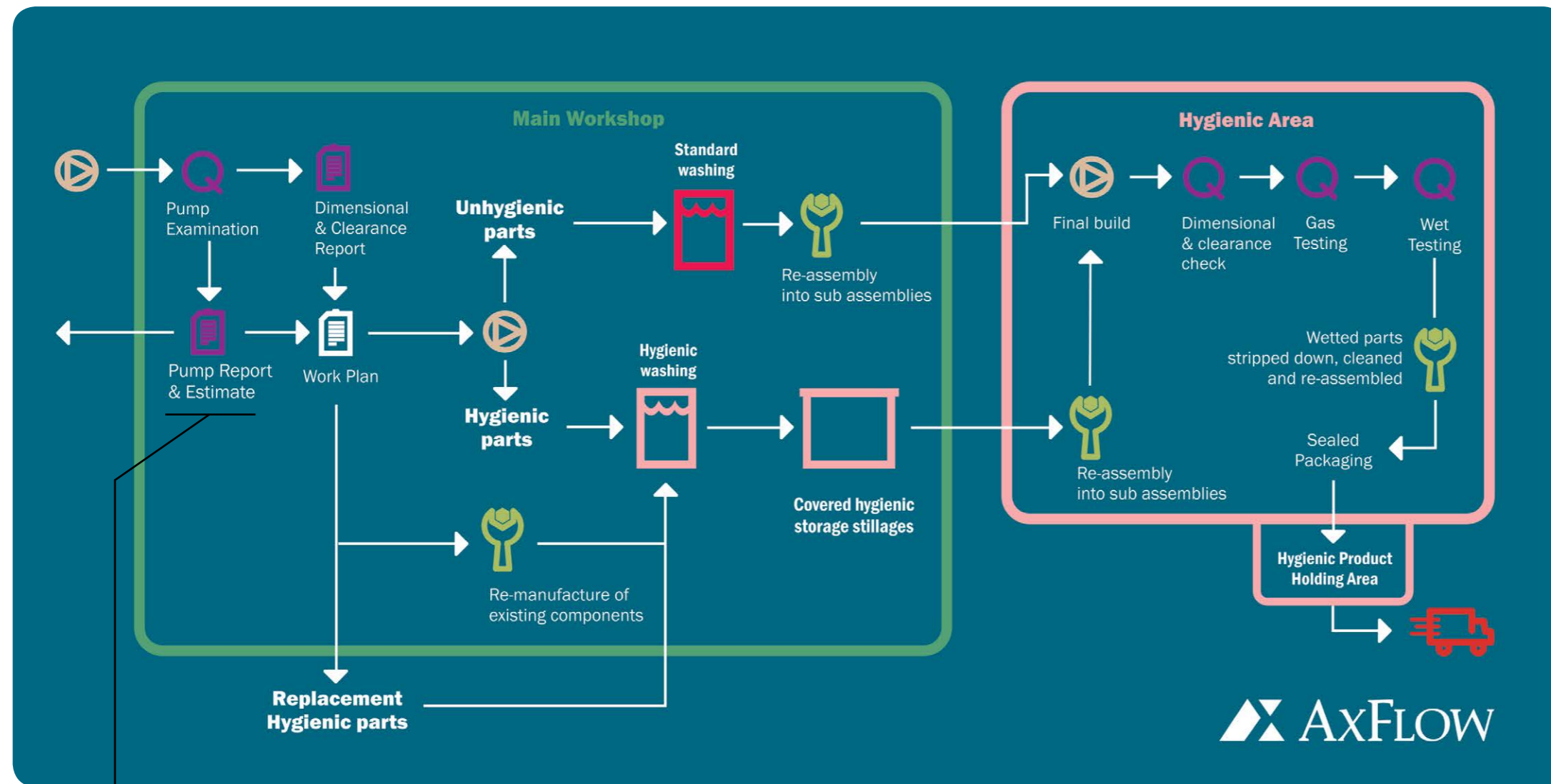
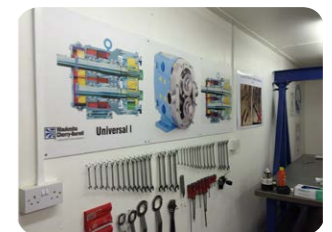
Our hygienic repair system was developed in partnership with a major UK food manufacturer and is based on five underlying principles:

1. Separating the hygienic and unhygienic parts as soon as possible.
2. Keeping them separate until the very last moment by using different equipment and areas (even within the main workshop).
3. Using the hygienic area as little as possible.
4. Recognizing that internal tolerances are critical to many processes.
5. Testing every pump we repair.



Our hygienic repair facilities include:

1. Clean room curtained off from the rest of the workshop,
2. Sanitary test facilities with the ability to gas and water test pumps.
3. Hygienic tools and fittings.
4. Dedicated ultrasonic cleaning equipment,
5. Secure and sealed storage for the hygienic pump components
6. Clean working areas for the non-hygienic parts.

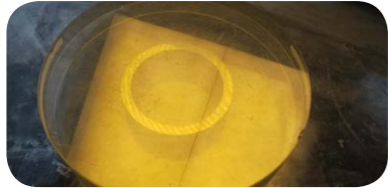


Our pump reports and work estimates all include photographs and clear explanations, along with recommendations when necessary.



Comprehensive Engineering Capabilities

Our Service Centres are also equipped with an impressive array of engineering equipment and machinery that allow us to offer a complete engineering solution and the ability to refurbish or re-engineer existing components.



Dynamic Balancing

Vibration caused by wear of impellers can be a big factor in early pump failures. AxFlow can balance rotating assemblies up to 1.5 tonnes to ISO 1940 G1. As a minimum standard, we balance to G2.5 (maximum 2.5mm/s).



Laser Alignment

Using the latest Laser Alignment instrument and software we can align your pump and motor with greater accuracy than the coupling manufacturers recommendation to ensure correct coupling alignment to maximise bearing and mechanical seal life.



Mechanical Seal Refurbishment

We are specialists in the refurbishment of mechanical seals from chemical/food pumps to chemical reactors and mixers. We can handle sizes from 25 to 330 mm shaft size. Consequently, we have extensive lapping and ceramic/carbide face manufacturing facilities.



Re-engineered Components

With many manufacturers having ceased production, replacement parts may have become impossible to get, as a result we have become experts in the re-casting and machining of obsolete pump components.



In-House Machining

We boast an impressive array of engineering equipment spread across our 5 Service Centres. This allows us to react quickly and ensure the quality of our work is maintained.



In-House Paint Plant

We have invested in our own paint plants that allow us to ensure the quality of our paint finish and the ability to offer a range of specialised finishes to match a variety of environmental requirements.



Pump Monitoring

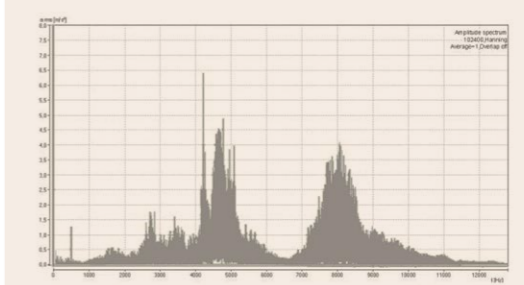
Monitoring your pumps will help reduce pump repairs, avoid unexpected failures, prolong their life, help identify problems somewhere else in your system and reduce your power consumption by keeping your pumps at optimum efficiency.

We have experienced personnel trained to use the latest monitoring equipment with years of pump knowledge behind them.

- Scheduled site visits.
- Vibration tests using the latest equipment.
- Bearing condition measurement.
- Thermal imaging.
- A planned maintenance schedule.
- On site training of maintenance operatives.
- Analysis of your liquids with our in-house rheology measuring equipment.



Cavitation Readings



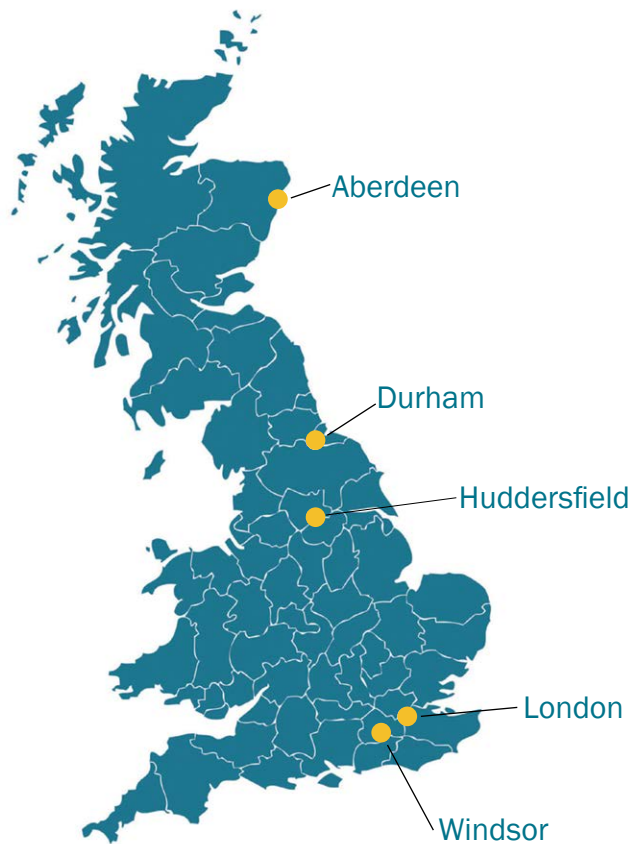
Pump check

We offer several types of pump survey designed to optimise your pumps and highlight any potential problems.

They range from simple site inspections to comprehensive diagnostic analyses back at one of our Service Centres.

Typically they would include; a visual inspection, vibration check, Thermal imaging absorbed power check, leak examination and pipework inspection.





AxFlow London

Orion Park, Northfield Avenue, Ealing, London W13 9SJ

Tel.: +44 (0)208 579 2111 E-mail: info@axflow.co.uk www.axflow.co.uk

AxFlow Scotland

Unit 3, Harlaw Centre, Howe Moss Crescent, Kirkhill
Industrial Estate, Dyce, Aberdeen, AB21 OGN

Tel.: +44 (0)1224 729 367

AxFlow Durham

Unit 31, Evans Business Centre, Aycliffe Business Park,
Newton Aycliffe, County Durham, DL5 6ZF

Tel.: +44 (0)1325 327 322

AxFlow Huddersfield

Unit 9a, Fieldhouse Business Park, Old Fieldhouse
Lane, Huddersfield, HD2 1FA

Tel.: +44 (0)1484 543 649

AxFlow Windsor

Unit 5, Millside Park, Crouch Lane, Winkfield, Windsor,
Berkshire, SL4 4PX

Tel.: +44 (0)1344 886 633