



GRUNDFOS DOSING PUMPS AND ACCESSORIES

The simplest dosing technology

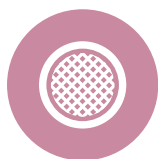
SMART DIGITAL DIAPHRAGM PUMPS

The latest generation of digital dosing pumps Grundfos Smart Digital DDA, DDC, and DDE with powerful speed controlled stepper motors represent the most advanced media dosing technology.

- ✓ Flow rate up to 30 l/h
- ✓ Pressure up to 16 bar
- ✓ On-pump control interface
- ✓ Various material and control options
- ✓ Cost-effective and reliable dosing

Dosing accuracy up to

1 %



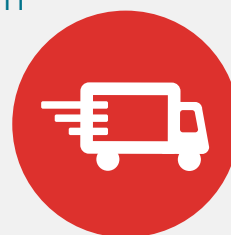
AVAILABLE FOR IMMEDIATE DELIVERY

AxFlow now offers immediate delivery of **Grundfos dosing pumps** and accessories thanks to central warehouse **stock in the Netherlands**.

We offer the **largest stock availability** of Grundfos portfolio **in all of Europe!**

Pump at **your place** within

72 h





SMART DIGITAL DDA



The most advanced series of Grundfos Smart Digital dosing pump with extended performance and pressure range, FlowControl system, and measuring functions for demanding industrial applications.

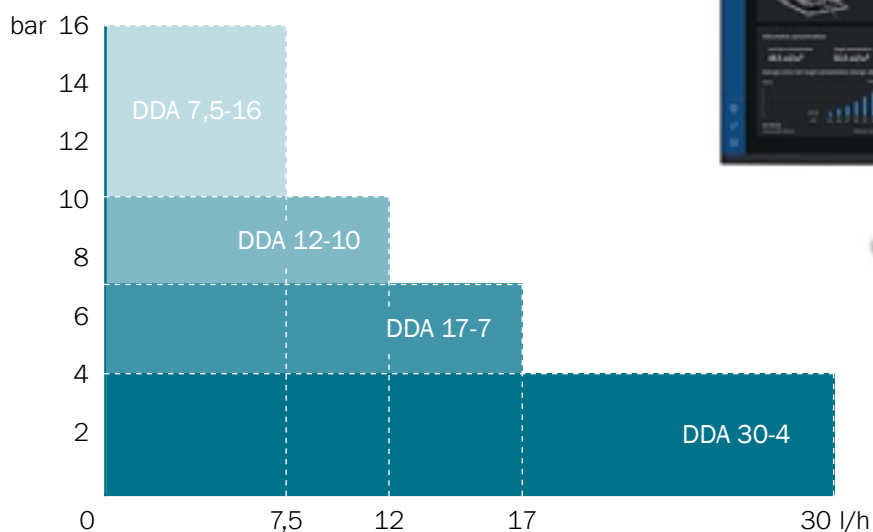
- Graphic LC display with 3-side mounting option
- FlowControl with selective fault diagnostics
- SlowMode for media with viscosity up to 3,000 cP
- Integrated flow measurement
- Auto-Flow Adapt for automatic flow adjustment
- Automatic degassing
- Dosing modes (time or pulse-based)
- Control ratio up to 1:3000
- Pulse and analog control
- Optional E-box for Profibus DP integration



DOSING HEAD VARIANTS



SEALING VARIANTS

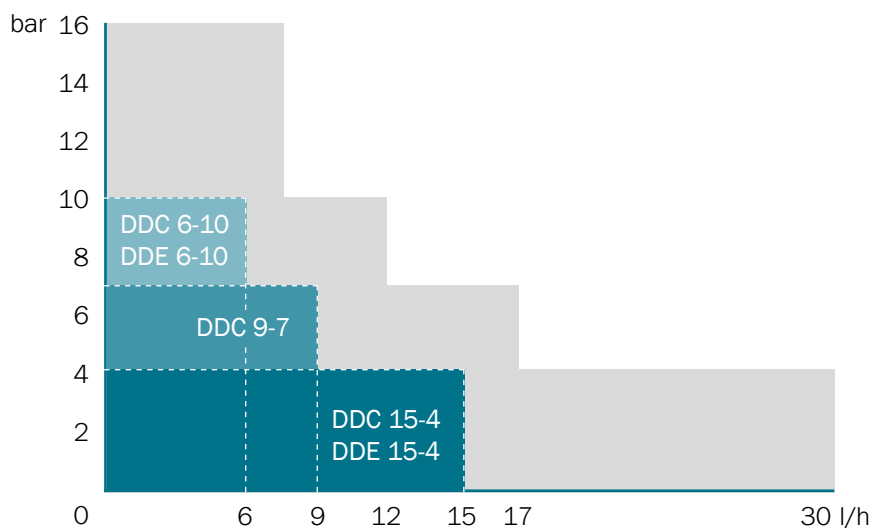




SMART DIGITAL DDC

The Grundfos Smart Digital DDC dosing pump series is the optimal solution for standard dosing applications. Offers 2 SlowMode modes (25 and 50%), calibration mode, and a simple, user-friendly interface.

- Graphic LC display with 3-side mounting option
- SlowMode for media with viscosity up to 3,000 cP
- Degassing function
- Calibration mode
- Pulse and analog control
- Control ratio up to 1:1000
- 2 relay outputs
- External stop



DOSING HEAD VARIANTS



SEALING VARIANTS



SMART DIGITAL DDE

The economical range of Smart Digital DDE diaphragm dosing pumps with basic functions including manual operation or PLC control.

- Low price
- Smooth dosing
- Always 100% suction stroke
- Media viscosity up to 50 cP
- Control ratio up to 1:1000
- Manual and pulse control
- Capacity setting 0.1 - 100%
- External stop and empty tank warning



Chemical compatibility

Correct chemical compatibility between pump and dosed media is essential for reliable and safe operation. Incompatible materials lead to degradation of wetted and mechanical parts, leaks, reduced efficiency, operational safety issues, or fatal system damage/failure.

Chemical resistance of a material is influenced by various factors (media purity, temperature, abrasive particles, etc.). The stated chemical resistance to various chemicals is indicative only.

DOSING HEAD VARIANTS

PP

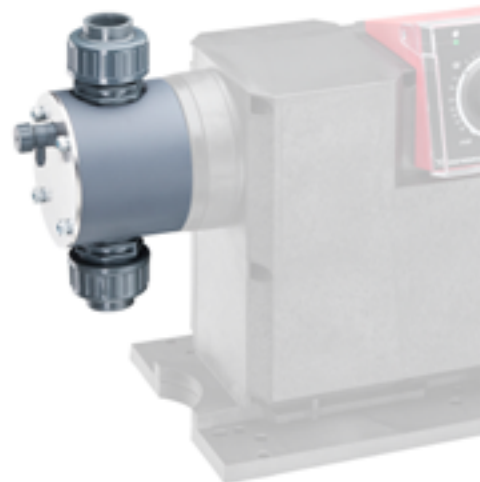
Polypropylene dosing head is suitable for most chemicals. Provides optimal resistance to acids, bases, and organic solvents.

PVC

PVC dosing head is used for more aggressive chemicals. Highly resistant to strong acids, bases, and corrosive agents.

PVDF

PVDF dosing head is recommended for the most aggressive chemicals. Resistant to extremely strong acids, solvents, and oxidizers.



SEALING VARIANTS

EPDM

EPDM is one of the most common sealing choices for dosing chemicals. Offers excellent resistance to most common chemicals.

FKM

FKM or Viton is suitable not only for common chemicals but also for heavy oils, fuels, organic solvents, and other media.

PTFE

PTFE or Teflon offers the highest chemical resistance, inert to even the most aggressive chemicals. Excellent thermal resistance.

WIDE RANGE OF MATERIALS

All Grundfos dosing pump series we offer provide 3 material variants for the dosing head and seals. For an exact overview of material combinations by series and size, see the 'Pump selection' table.



Largest stock availability of Grundfos pumps and accessories in Europe!



Feature Overview

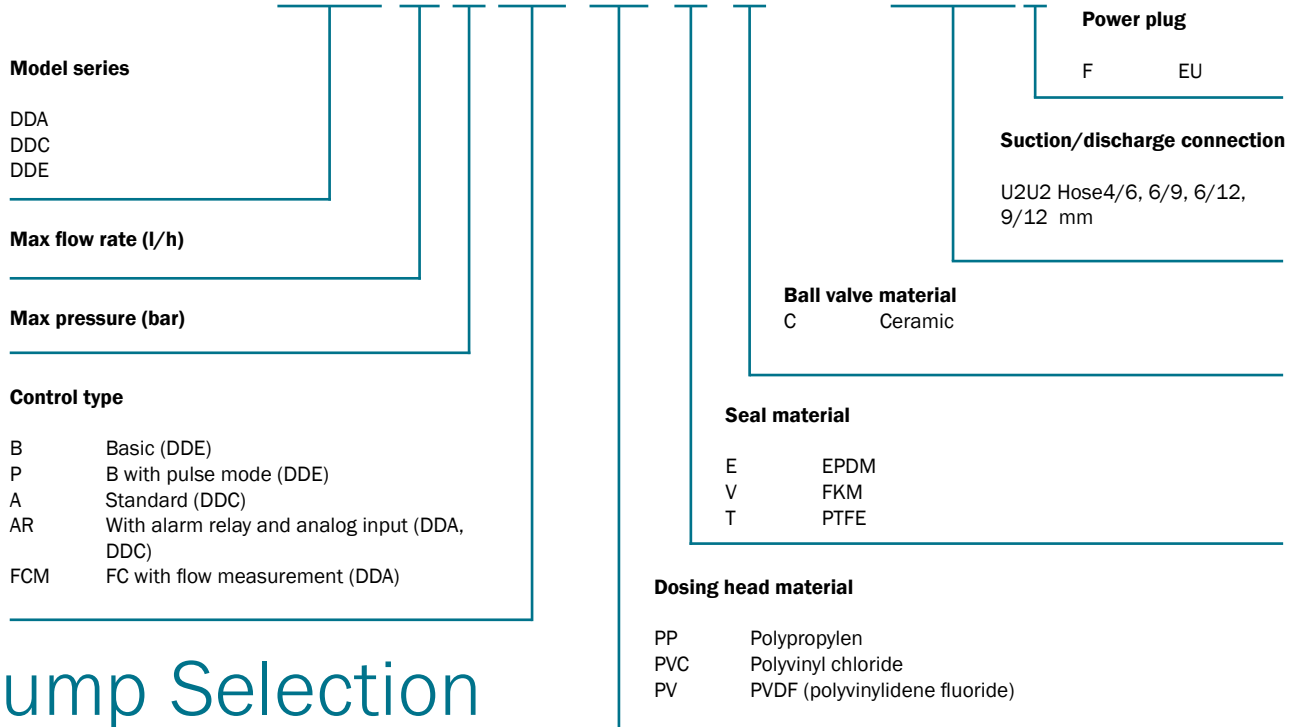


	DDA		DDC		DDE	
	FCM	AR	AR	A	P	B
Digital dosing	•	•	•	•	•	•
Mounting plate	•	•	•	•	•	•
Control panel						
Control box with display in 3 positions	•	•	•	•		
Front-mounted control panel					•	•
Transparent protective cover for control elements	•	•	•	•		
Adjustable dosing units (ml, l, gal)	•	•	•	•		
Graphic display for operational indication	•	•	•	•		
Rotary knob for easy navigation	•	•	•	•		
Regulator for dosing capacity adjustment					•	•
Start/Stop button	•	•	•	•		
Degassing button	•	•	•	•	•	
Operation mode switch (manual/pulse)					•	
Operating modes						
Manual power regulation	•	•	•	•	•	•
Pulse-based dosing in ml/pulse	•	•	•	•		
Pulse control (ml/pulse)					•	
Analog control 0/4–20 mA	•	•	•			
Batch dosing mode (pulse)	•	•				
Interval dosing timer	•	•				
Weekly dosing timer	•	•				
Bus-based control	•	•				
Functions						
Automatic standby degassing	•	•	•	•		
FlowControl system with fault diagnostics	•					
Pressure monitoring (min/max)	•					
Flow measurement	•					
AutoFlowAdapt	•					
Anti-cavitation (SlowMode)	•	•	•	•		
Calibration mode	•	•	•	•		
Performance range limitation for analog input	•	•				
Display showing operational status	•	•	•	•		
Relay settings: alarm, warning, stroke signal, dosing, pulse input	•	•	•		•	
Additional relay settings: interval, weekly timer	•	•				
Inputs/Outputs						
Input for external stop	•	•	•	•	•	
Input for pulse control	•	•	•	•	•	
Input for analog signal 0/4–20 mA	•	•	•			
Input for low-level alert	•	•	•	•	•	
Input for empty tank alert	•	•	•	•	•	
Analog output 0/4–20 mA	•	•	•			
GENIbus input/output	•	•				
E-box input/output (e.g., E-box 150 with Profibus DP)	•	•				

Code Breakdown

Each Grundfos dosing pump and accessory we offer has a unique code specifying model range, parameters, control variant, materials, and more.

DDA 17-7 AR-PP/E/C-F-31U2U2FG



Pump Selection

To easily select the right pump, use our table to immediately find the order code for your configuration. If your desired configuration is greyed out, the pump is available on request.

Dosing head material			PP		PVC		PVDF
Seal material			EPDM	FKM	EPDM	FKM	PTFE
Series	Model	Control					
DDA	7,5-16	AR	97721938			97721950	97721966
		FCM	97722006			97722018	
	12-10	AR	97722040			97722052	
		FCM			97722116		
	17-7	AR	97722142			97722154	97722170
		FCM	97722210			97722222	97722238
	30-4	AR	97722244			97722256	
		FCM	97722313			97722335	
DDC	6-10	AR	97721358			97721370	97721387
		A	97721324				
	9-7	AR	97721427	97721431			
	15-4	AR	97721495			97721507	97721523
DDE	6-10	B	97720905			97720927	97720943
		P	97720949			97720961	97720977
	15-4	B	97720983			97720995	97721011
		P	97721017			97721029	97721045

Pump Order

Your new Grundfos dosing pump is just a few steps away. If you're sure you've chosen the right pump for your application and duty point, simply enter the order code in the 'Search' field on our website, add the item to the inquiry form, and we'll get back to you with a quote as soon as possible.

If you're unsure if your selected pump is suitable, contact us. We'll go over your requirements or current system with you and choose the best solution.


DDA Series	
Order code	Product
97722040	DDA 12-10 AR-PP/E/C-F-31U2U2FG
97722052	DDA 12-10 AR-PVC/V/C-F-31U2U2FG
97722116	DDA 12-10 FCM-PVC/E/C-F-31U2U2FG
97722142	DDA 17-7 AR-PP/E/C-F-31U2U2FG
97722170	DDA 17-7 AR-PV/T/C-F-31U2U2FG
97722154	DDA 17-7 AR-PVC/V/C-F-31U2U2FG
97722210	DDA 17-7 FCM-PP/E/C-F-31U2U2FG
97722238	DDA 17-7 FCM-PV/T/C-F-31U2U2FG
97722222	DDA 17-7 FCM-PVC/V/C-F-31U2U2FG
97722244	DDA 30-4 AR-PP/E/C-F-31U2U2FG
97722256	DDA 30-4 AR-PVC/V/C-F-31U2U2FG
97722313	DDA 30-4 FCM-PP/E/C-F-31U2U2FG
97722335	DDA 30-4 FCM-PVC/V/C-F-31U2U2FG
97721938	DDA 7.5-16 AR-PP/E/C-F-31U2U2FG
97721966	DDA 7.5-16 AR-PV/T/C-F-31U2U2FG
97721950	DDA 7.5-16 AR-PVC/V/C-F-31U2U2FG
97722006	DDA 7.5-16 FCM-PP/E/C-F-31U2U2FG
97722018	DDA 7.5-16 FCM-PVC/V/C-F-31U2U2FG
DDC Series	
Order code	Product
97721495	DDC 15-4 AR-PP/E/C-F-31U2U2FG
97721523	DDC 15-4 AR-PV/T/C-F-31U2U2FG
97721507	DDC 15-4 AR-PVC/V/C-F-31U2U2FG
97721324	DDC 6-10 A-PP/E/C-F-31U2U2FG
97721358	DDC 6-10 AR-PP/E/C-F-31U2U2FG
97721387	DDC 6-10 AR-PV/T/C-F-31U2U2FG
97721370	DDC 6-10 AR-PVC/V/C-F-31U2U2FG
97721427	DDC 9-7 AR-PP/E/C-F-31U2U2FG
97721431	DDC 9-7 AR-PP/V/C-F-31U2U2FG
DDE Series	
Order code	Product
97720983	DDE 15-4 B-PP/E/C-X-31U2U2FG
97721011	DDE 15-4 B-PV/T/C-X-31U2U2FG
97720995	DDE 15-4 B-PVC/V/C-X-31U2U2FG
97721017	DDE 15-4 P-PP/E/C-X-31U2U2FG
97721045	DDE 15-4 P-PV/T/C-X-31U2U2FG
97721029	DDE 15-4 P-PVC/V/C-X-31U2U2FG
97720905	DDE 6-10 B-PP/E/C-X-31U2U2FG
97720943	DDE 6-10 B-PV/T/C-X-31U2U2FG
97720927	DDE 6-10 B-PVC/V/C-X-31U2U2FG
97720949	DDE 6-10 P-PP/E/C-X-31U2U2FG
97720977	DDE 6-10 P-PV/T/C-X-31U2U2FG
97720961	DDE 6-10 P-PVC/V/C-X-31U2U2FG

1 Find your pump by code

Find your selected pump on our website.

Check dimensions and key parameters, **download the datasheet**, or contact us.

We're happy to help.

 **SEARCH** 

2 Request a quote

Move the pump to the inquiry list, fill in your personal and/or company details, and **consider** whether you will require **installation**.

Then simply send the request.



Include installation

REQUEST QUOTE

3 Confirm the order

We will contact you with a quote as soon as possible.

If you **confirm it before 1:00 p.m.**, the order will be **shipped the same day** from our central warehouse.



Pumptechnique SIA

Your price quote

4 Get ready for your new pump

We have more than 1,000 Grundfos pumps in stock.

Your order can be **delivered within 72 hours!**



Accessories

We offer accessories and spare parts for Grundfos pumps in multiple variants and materials with 72-hour delivery.

VALVES

Suction valves with level indication and multifunction valves for pump degassing and depressurization up to 10 bar.

Body materials:	PE, PVDF
Connection materials:	PP, PVC
Seal materials:	FKM, EPDM, PTFE
Diaphragm materials:	PTFE
Ball materials:	Ceramic
Max flow rate:	60 l/h*1

*1 At water-like viscosity



CABLES AND CONNECTORS

Essential accessories for connecting the dosing pump to external control systems – process controllers, flow meters, level sensors, and other devices.

Cable material:	PVC
Connector type:	M 12

INSTALLATION KITS

The kit includes an injection valve with spring-loaded check valve, suction, discharge, and degassing hose, and suction valve with filter and weight, with or without level indication.

Body materials:	PP, PVC, PVDF
Seal materials:	FKM, EPDM, PTFE
Ball materials:	Ceramic
Max flow rate:	30 l/h ¹
Max pressure:	13 bar ²
Connection (suction/discharge):	4/6 mm, 6/9 mm

*1 At water-like viscosity

*2 At medium temperature 20 °C



HOSES

Connection (suction/discharge):	4/6 mm
Length:	50 m
Material:	PE
Max flow rate:	7.5 l/h ¹
Max pressure:	13 bar ²

*1 At water-like viscosity

*2 At medium temperature 20 °C



SPARE KITS

Spare parts kit including diaphragms, suction and discharge valves, screws, ball, and seals, recommended to replace every 8,000 operating hours.

Valve materials:	PP, PVC, PVDF
Seal materials:	FKM, EPDM, PTFE
Ball materials:	Ceramic
Diaphragm materials:	PP



Accessory Order

Your Grundfos dosing pump accessories are just a few steps away. If you're sure you've selected the right accessories for your pump, simply enter the order code into the 'Search' field on our website, add the item to the inquiry form, and we'll get back to you with a quote as soon as possible.

Take advantage of our **large stock availability** of Grundfos pumps and accessories in Europe **with 72-hour delivery!**

**SEARCH****REQUEST QUOTE**

Valves

Order code	Product	Materials
98070966	FV-2L-G5/8PE/V,E/C U2	PE/FKM,EPDM/ceramics
95704591	MFV-G5/8-10PP/E U2	PP/EPDM
95730812	MFV-G5/8-10PV/T U2	PVDF/PTFE
95730807	MFV-G5/8-10PVC/V U2	PVC/FKM

Hoses

Order code	Product	Materials
91835680	Hose DN4 PE 150 ft 50m	PE

Cables and connectors

Order code	Product	Materials
96632922	ACC cable 5m, analogue output, linear	PVC
96609016	ACC cable 5m, control input, linear	PVC
96609019	ACC cable 5m, relay output, straight	PVC

Installation kits

Order code	Product	Materials
95730441	Installation kit I001 PP/E/C-4/6mm-NL	PP/EPDM/ceramics
95730447	Installation kit I001 PV/T/C-4/6mm-NL	PVDF/PTFE/ceramics
95730442	Installation kit I001 PVC/V/C-4/6mm-NL	PVC/FKM/ceramics
95730449	Installation kit I005 PP/E/C-6/9mm-NL	PP/EPDM/ceramics
95730455	Installation kit I005 PV/T/C-6/9mm-NL	PVDF/PTFE/ceramics
95730450	Installation kit I005 PVC/V/C-6/9mm-NL	PVC/FKM/ceramics
95730465	Installation kit I011 PP/E/C-4/6mm-2L	PP/EPDM/ceramics
95730475	Installation kit I015 PVC/E/C-6/9mm-2L	PVC/EPDM/ceramics

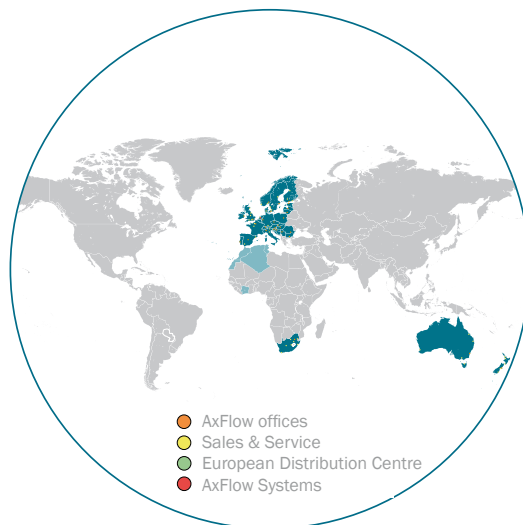
Spare kits

Order code	Product	Materials
97751445	Valve/diaphragm set SD-M-PP/ V/C-1	PP/FKM/ceramics
97751461	Valve/diaphragm set SD-L-PP/E/C-1	PP/EPDM/ceramics
97751515	Valve/diaphragm set SD-L-PVC/V/C-1	PVC/FKM/ceramics
97751439	Valve/diaphragm set SD-M-PP/E/C-1	PP/EPDM/ceramics
97751557	Valve/diaphragm set SD-M-PV/T/C-1	PVDF/PTFE/ceramics
97751497	Valve/diaphragm set SD-M-PVC/V/C-1	PVC/FKM/ceramics
97751427	Valve/diaphragm set SD-S-PP/E/C-1	PP/EPDM/ceramics
97751539	Valve/diaphragm set SD-S-PV/T/C-1	PVDF/PTFE/ceramics
97751479	Valve/diaphragm set SD-S-PVC/V/C-1	PVC/FKM/ceramics

Our expertise for your process

AxFlow – a strong brand

AxFlow Group, part of Axel Johnson International, is present in 32 markets in Europe, as well as in South Africa, Australia and New Zealand. AxFlow is one of six business areas within Axel Johnson International and is owned by the Axel Johnson Group. With this comes stability and security, but just as importantly, we share values and goals with this fifth-generation family business that has successfully developed leading companies over the years.



Technical support and expertise

AxFlow has more than 50 years of knowledge and experience in developing fluid handling solutions. In a personalised conversation we listen to your wishes and expectations and then give you advice and guidance to ultimately deliver the right solution.



European distribution centre

AxFlow's European distribution centre in Lelystad has a very large stock of pumps and parts and offers a 95% service level for all A and B products. If you order before 12 noon today, we can deliver the products tomorrow.



Installation, repair and maintenance

Our care goes beyond simply supplying AxFlow quality equipment and associated spare parts. AxFlow also offers maintenance and, if necessary, repair or overhaul via AxFlow Service. We do our utmost to avoid unpleasant surprises for you as a customer.



System design and technology

System solutions - AxFlow Systems delivers from simple pump units, mobile dosing systems to customised complete systems!

We look forward to hearing from you!

00-000 00 00



For more information about our products:

www.axflow.lv

fluidity.nonstop® is about keeping your processes running. And it's our promise and our commitment to a level of service and a quality of product, performance and expertise that has never been bettered.

By its nature, fluidity.nonstop is never static, that promise is ever-evolving and improving. As needs and demands change, we work to meet those new challenges and try to surpass them. We are Europe's leading source of pumps and pump expertise for the process industry and we intend to maintain that position by working fluidly and ceaselessly to be the best.

For more information, please visit www.axflow.lv

Pumptechnique SIA
Piedrujas street 7/6
Riga, LV-1073, Latvia
Tel. +371 6755 3750
E-mail: pump@pump.lv

